

*Section 27-95-11
 As referred to in
 Engr Tie Book*

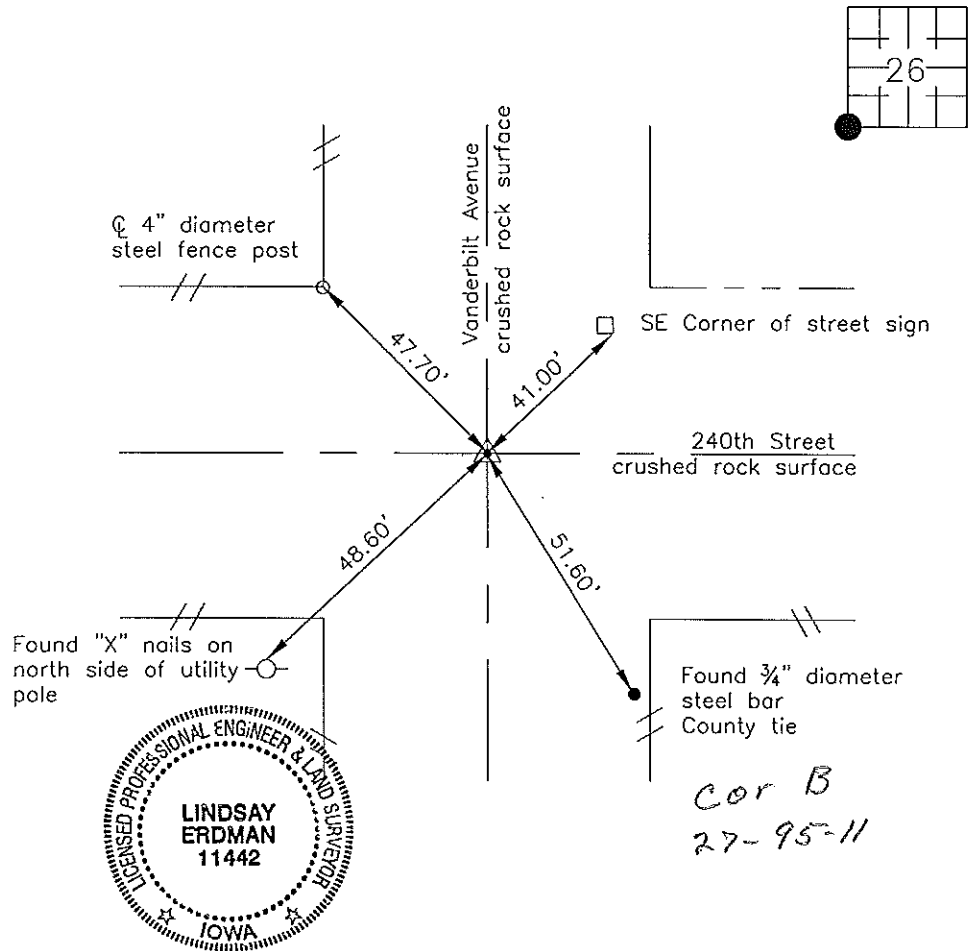
Prepared by: Erdman Engineering, P.C., 708 Commerce Drive, P.O. Box 246, Decorah, Iowa 52101 (563) 382-4194

United States Public Land Survey Corner Certificate
 of 27

Land Survey Monuments situated in Section 26, Township 95, Range 11 West of the 5th Principal Meridian in Chickasaw County, Iowa. Previously recorded in does not apply in the county Recorder's Office.

Monument Description and Remarks: This certificate is prepared in accordance with Section 193C of the Code of Iowa. No previous certificate has been filed for this corner location. Chickasaw County Engineer's Reference ties show that an "IP" was set over a stone and hub in 1952 and found an retied in 1983. We found a set of "X" nails in a utility pole and a 3/4" steel bar that had been used previously as a tie markers. From these ties we found a 3/4" square steel bar at the approximate centerline-centerline intersection of the county roads. We used the steel bar as the SW Corner of Section 26, Township 95 North, Range 11 West.

Plan-View



I hereby certify that this land surveying document was prepared and the related survey work was performed by me or under my direct personal supervision and that I am a duly licensed Land Surveyor under the laws of the State of Iowa.

Signature *Lindsay Erdman*
 Lindsay Erdman, P.E. and P.L.S. Iowa License Number 11442

Date: 8/1/08

My license renewal date is December 31, 2008

Corner(s) to be Indexed

Corner	Section	Township	Range
SW	26	95	11

3696