

Chickasaw Co. Recorder  
 Cindy Messersmith  
**Fee Book 2015-0706**  
 06/08/2015 @02:59PM  
 SCC: SEC COR CERT  
 Book: Page: # Pages: 1  
 Total Fees: \$7.00

Prepared by & Return to: Harold - Reicks Surveying, 10 East Main Street, New Hampton, IA 50659, Ph. 641-394-2725

### UNITED STATES PUBLIC LAND SURVEY CORNER CERTIFICATE

Land Survey Monuments situated in Section 35, Township 95 North, Range 11 West of the Fifth Principal Meridian, Chickasaw County, Iowa. Not previously recorded in the County Recorder's office.

This certificate is being prepared in compliance with Iowa Code Chapter 355.11 because:

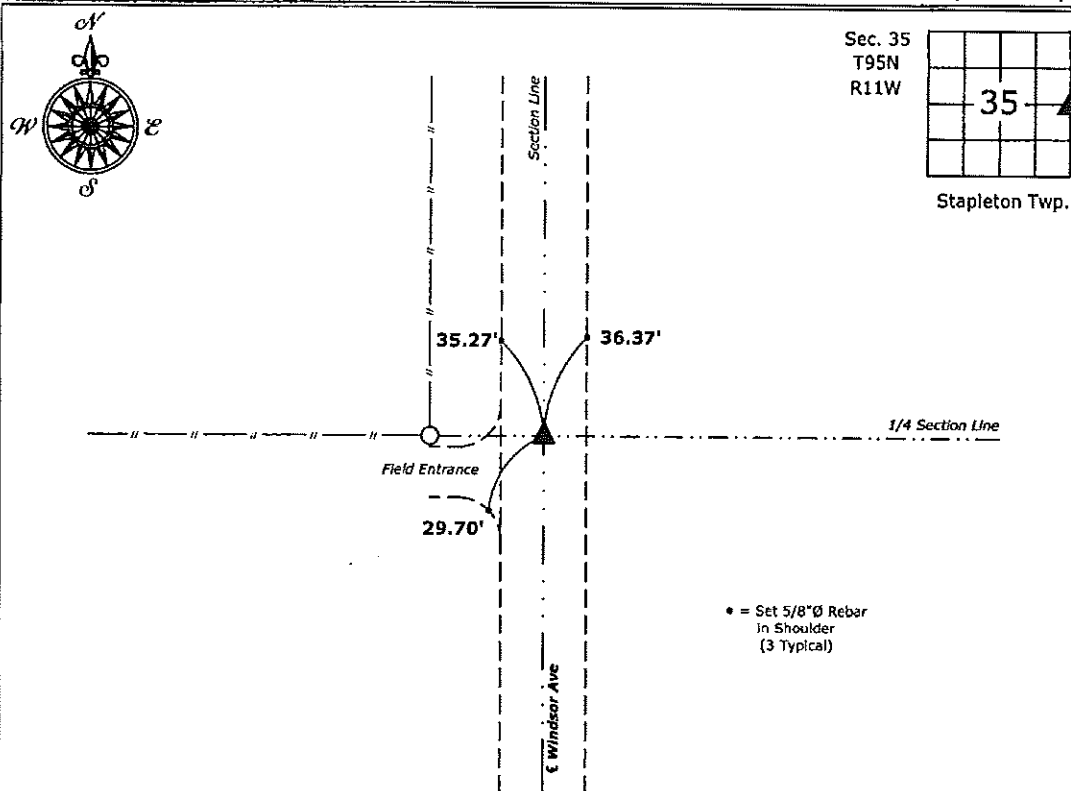
- There is no certificate on file for this corner.
- There are no longer three valid ties of record.
- There are changes to reference ties of record.
- There is change of monumentation of record.
- To clarify description of record monument (ties).

Monument Description and Remarks:

**East 1/4 Corner:** Set 5/8"Ø rebar w/2"Ø aluminum cap PLS 19211 at the intersection of the Centerline of Windsor Avenue and a possession line fence from the West.

#### PLAN - VIEW

(Show a minimum of three reference ties to durable physical objects, relevant monuments and physical conditions that will enable recovery of the corner.)



**East 1/4 Corner Section 35-95-11**  
 Set 5/8"Ø rebar w/2"Ø aluminum cap PLS 19211



I hereby certify that this land surveying document was prepared and the related survey work was performed by me or under my direct personal supervision and that I am a duly licensed Land Surveyor under the laws of the State of Iowa.

*Kirk D. Reicks* 6-8-15  
 Kirk D. Reicks Date:

License number 19211  
 My license renewal date is December 31, 2016.  
 Sheets covered by this seal: Individual sheet only

#### List Corners to be Indexed

Corners	Section	Twp.	Range
E 1/4	35	95	11

Project Number: 2015-083

FB: Chickasaw County 7, Pgs. 32, 34

File: S:\\_L3D Projects\County Control Systems\CHICKASAW\CHICK-37\CHICK-37.dwg, 6/8/2015 1:02:31 PM