

FILED 2005-1699

RECORDER'S OFFICE  
CHICKASAW COUNTY, IOWA

2005 AUG 11 <sup>10:00 AM</sup> 9 21

CINDY MESSERSMITH  
COUNTY RECORDER

DANIEL T. CRAWFORD, P.E. & L.S. Crawford Engineering & Surveying, Inc., Independence, Iowa 319/334-7077

UNITED STATES PUBLIC LAND SURVEY CORNER CERTIFICATE

OF

Land Survey Monuments situated in Section 26, Township 95 N, Range

11 W, of the Fifth Principal Meridian, Chickasaw County, Iowa.

Previously recorded in N/A in County Recorder's Office.

Monument Description and Remarks:

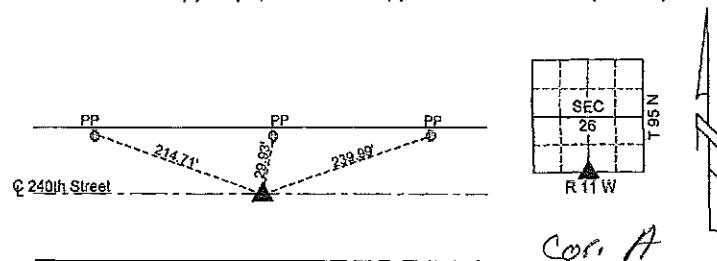
Reason for preparing certificate: No corner certificate on file.

Evidence and detailed procedure used to establish corner position: Corner position placed midway between east and west lines of Section in centerline of county road right-of-way.

Monumentation found or placed: Placed 1/2" rebar with wypo #8812.

PLAN-VIEW

(Show a minimum of three reference ties to durable physical objects, relevant monuments and physical conditions that will enable recovery of the corner).



South 1/4 Corner  
Section 26-95-11  
Set 1/2" rebar w/wypo #8812

I hereby certify that the survey work was completed and this land surveying document was prepared by me or under my direct personal supervision and that I am a duly licensed land surveyor under the laws of the State of Iowa.

Signature: Daniel T. Crawford  
DANIEL T. CRAWFORD, P.E. & L.S.

Date: 8-10-05 Reg. No. 8812

My license renewal date is December 31, 2005

SEAL



Comers	Section	Twp.	Range
South 1/4 Corner	26	95 N	11 W