

DANIEL T. CRAWFORD, P.E. & L.S. Crawford Engineering & Surveying, Inc., Independence, Iowa 319/334-7077

UNITED STATES PUBLIC LAND SURVEY CORNER CERTIFICATE

OF

Land Survey Monuments situated in Section 26, Township 95 N, Range 11 W, of the Fifth Principal Meridian, Chickasaw County, Iowa.

Previously recorded in N/A In County Recorder's Office.

Monument Description and Remarks:

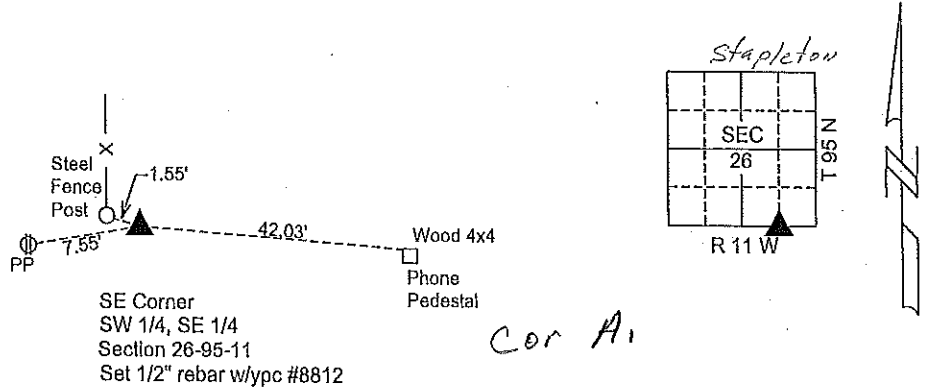
Reason for preparing certificate: No current certificate on file.

Evidence and detailed procedure used to establish corner position: Corner position determined by bisecting sides of Southeast Quarter of Section 26

Monumentation found or placed: Set 1/2" rebar with ypc #8812

PLAN-VIEW

(Show a minimum of three reference ties to durable physical objects, relevant monuments and physical conditions that will enable recovery of the corner).



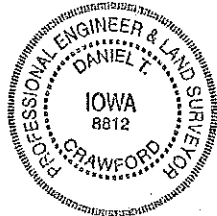
I hereby certify that the survey work was completed and this land surveying document was prepared by me or under my direct personal supervision and that I am a duly licensed land surveyor under the laws of the State of Iowa.

Signature: Daniel T. Crawford
DANIEL T. CRAWFORD, P.E. & L.S.

Date: 8-10-05 Reg. No. 8812

My license renewal date is December 31, 2005

SEAL



Corners	List Corners to be Indexed		
	Section	Twp.	Range
SE Corner SW 1/4, SE 1/4	26	95 N	11 W