

UNITED STATES PUBLIC LAND SURVEY CORNER CERTIFICATE

OF

Land Survey Monuments situated in Section 36, Township 95 North, Range 11 West, of the Fifth Principal Meridian, CHICKASAW County, Iowa. Previously recorded in NONE in County Recorder's Office.

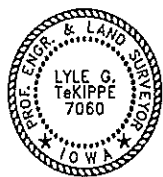
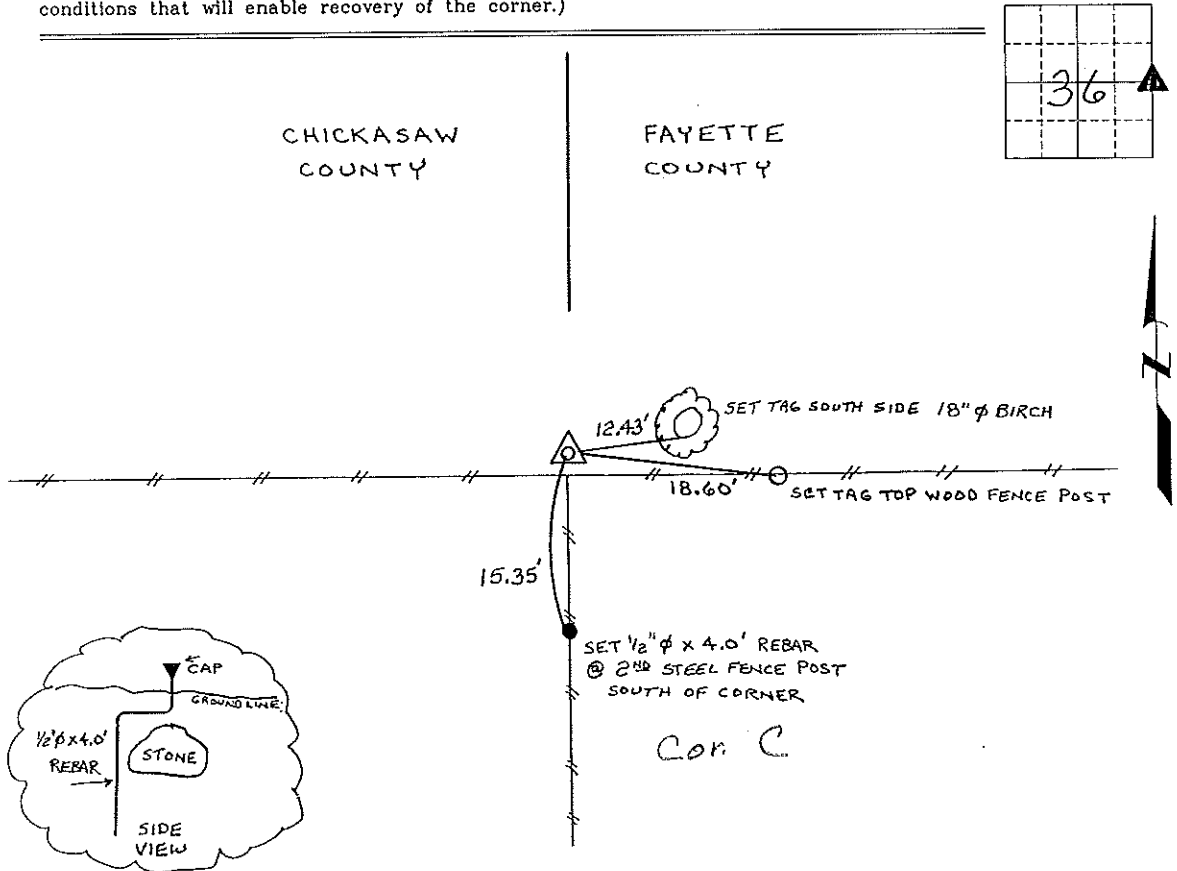
(book page, document number, etc.)

(Show reason for preparing this certificate, the evidence and detailed procedures used in establishing the corner positions and monumentation found or placed.)

Monument Description and Remarks: E 1/4 CORNER SECTION 36 T 95N R 11W: FOUND 12" GRANITE STONE 18" DEEP, ON THE NORTH SIDE OF AN OLD FENCE POST, AFTER CHECKING THIS POSITION WITH OTHER CORNERS IN THE SECTION, WE BENT A 1/2" x 4.0' REBAR IN THE CONFIGURATION SHOWN IN THE DETAIL BELOW, CENTER OF CAP 7060 IS OVER CENTER OF STONE.

PLAN - VIEW

(Show a minimum of three reference ties to durable physical objects, relevant monuments and physical conditions that will enable recovery of the corner.)



I hereby certify that this land surveying document was prepared and the related survey work was performed by me or under my direct personal supervision and that I am a duly licensed Land Surveyor under the laws of the State of Iowa.

Lyle G. TeKippe 12-31-96
 Lyle G. TeKippe Date
 License number 7060
 My license renewal date is December 31, 1996.
 Sheets covered by this seal: Individual

List Corners to be Indexed			
Corners	Section	Twp.	Range
E 1/4	36	95N	11W

Corner C - 36-95-11
 Placed in Tie Book 1/21/97