

Prepared by & Return to: Herold - Reicks Surveying, 10 East Main Street, New Hampton, IA 50659, Ph. 641-394-2725

United States Public Land Survey Corner Certificate

Land Survey Monument situated in
 Section 36, Township 95 North, Range 11 West of the Fifth Principal Meridian, Chickasaw County, Iowa.
 Not on file in the County Recorder's office.

This certificate is being prepared in compliance with Iowa Code Chapter 355.11 because:

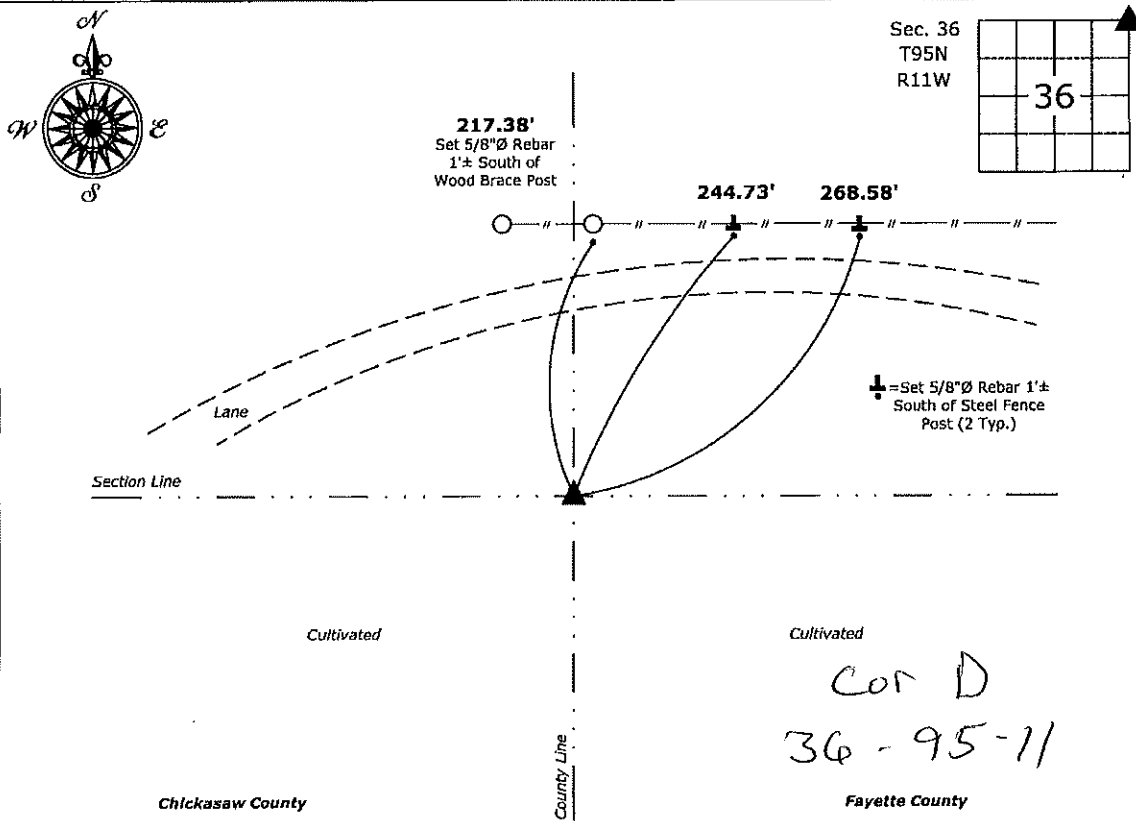
- There is no certificate on file for this corner.
- There are no longer three valid ties of record.
- There are changes to reference ties of record.
- There is change of monumentation of record.
- To clarify description of record monument (ties).

Monument Description and Remarks:

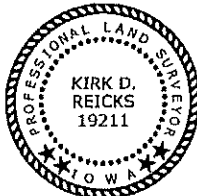
Northeast Corner: Set 5/8"Ø rebar with 2"Ø aluminum cap PLS 19211 at the record GLO distance of 2465.76' from the North 1/4 Corner of Section 31-95-10 (Fayette County) through the Western extension of a possession line fence running along the North Line of the NE 1/4 of the NW 1/4 of said Section 31-95-10. (Buried the monument 18" deep)

Plan View

(Show a minimum of three reference ties to durable physical objects, relevant monuments and physical conditions that will enable recovery of the corner.)



Northeast Corner of Section 36-95-11
 Set 5/8"Ø rebar w/2"Ø aluminum cap PLS 19211 (Buried 18" deep)



I hereby certify that this land surveying document was prepared and the related survey work was performed by me or under my direct personal supervision and that I am a duly licensed Land Surveyor under the laws of the State of Iowa.
Kirk D. Reicks 12-28-18
 Kirk D. Reicks Date:
 License number 19211
 My license renewal date is December 31, 2020.
 Sheets covered by this seal: Individual sheet only

| List Corner to be Indexed | | | |
|---------------------------|---------|------|-------|
| Corner | Section | Twp. | Range |
| NE | 36 | 95 | 11 |
| Project Number: 2018-176 | | | |
| FB; Fayette 3, Pgs. 48-49 | | | |