

Prepared by & Return to: Herold - Reicks Surveying, 10 East Main Street, New Hampton, IA 50659, Ph. 641-394-2725

**UNITED STATES PUBLIC LAND SURVEY CORNER CERTIFICATE**

Land Survey Monuments situated in Section 3, Township 95 North, Range 11 West of the Fifth Principal Meridian, Chickasaw County, Iowa. 1.) & 2.) Not previously recorded in County Recorder's office.

This certificate is being prepared in compliance with Iowa Code Chapter 355.11 because:

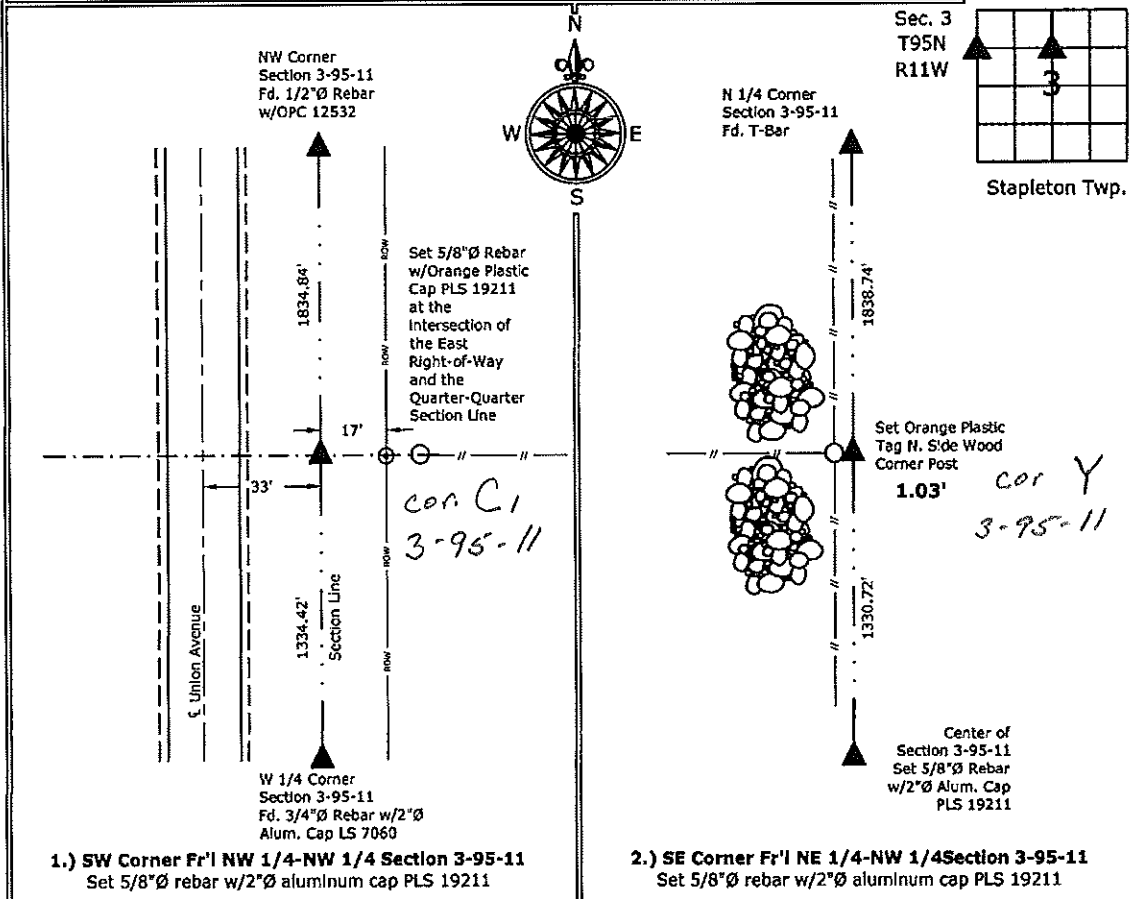
- There is no certificate on file for this corner.
- There are no longer three valid ties of record.
- There are changes to reference ties of record.
- There is change of monumentation of record.
- To clarify description of record monument (ties).

**Monument Description and Remarks:**

- 1.) SW Corner Fr'l NW 1/4-NW 1/4: Set 5/8"Ø rebar with 2"Ø aluminum cap PLS 19211 by single proportion of the original government distances between the West 1/4 and NW corners of the Section.
- 2.) SE Corner Fr'l NE 1/4-NW 1/4: Set 5/8"Ø rebar with 2"Ø aluminum cap PLS 19211 by single proportion of the original government distances between the North 1/4 corner and the Center of the Section.

**PLAN - VIEW**

(Show a minimum of three reference ties to durable physical objects, relevant monuments and physical conditions that will enable recovery of the corner.)



I hereby certify that this land surveying document was prepared and the related survey work was performed by me or under my direct personal supervision and that I am a duly licensed Land Surveyor under the laws of the State of Iowa.

*Kirk D. Reicks 11-9-11*  
 Kirk D. Reicks Date:  
 License number 19211  
 My license renewal date is December 31, 2012.  
 Sheets covered by this seal: Individual sheet only

List Corners to be Indexed			
Corners	Section	Twp.	Range
SW-NW-NW	3	95	11
SE-NE-NW	3	95	11

Project Number: 2011-106  
 FB: Chickasaw County 2, Pg. 71