

Prepared by & Return to: Herold - Reicks Surveying, 10 East Main Street, New Hampton, IA 50659, Ph. 641-394-2725

United States Public Land Survey Corner Certificate

Land Survey Monument situated in
 Section 4, Township 95 North, Range 11 West of the Fifth Principal Meridian, Chickasaw County, Iowa.
 On file in Document #2000-1555 in the County Recorder's office.

This certificate is being prepared in compliance with Iowa Code Chapter 355.11 because:

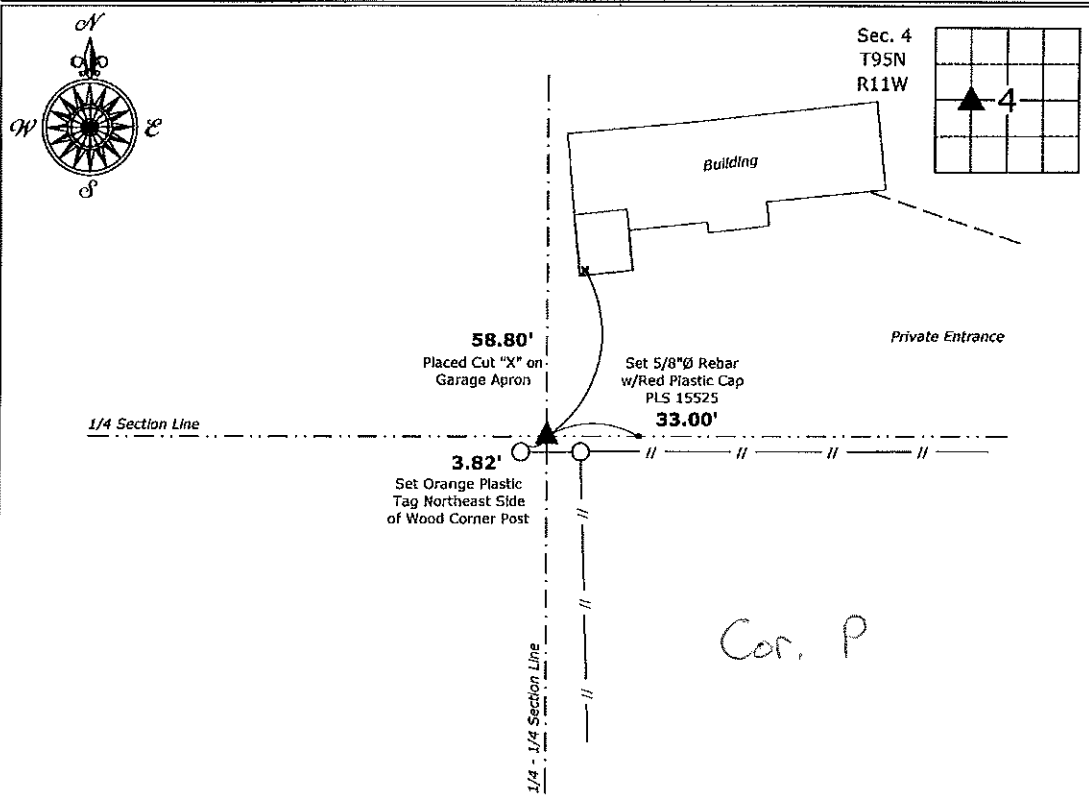
- There is no certificate on file for this corner.
- There are no longer three valid ties of record.
- There are changes to reference ties of record.
- There is change of monumentation of record.
- To clarify description of record monument (ties).

Monument Description and Remarks:

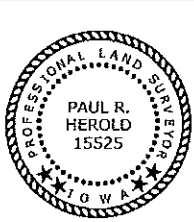
Northwest Corner of NE 1/4 - SW 1/4: Set 5/8"Ø rebar w/2"Ø aluminum cap PLS 15525
 The Previous Monument and all of the Ties were missing, set monument at the record location with information obtained from the previously recorded Section Corner Certificate and subsequent Plats of Survey that utilized the Corner.

Plan View

(Show a minimum of three reference ties to durable physical objects, relevant monuments and physical conditions that will enable recovery of the corner.)



Northwest Corner of NE 1/4 - SW 1/4 of Section 4-95-11
 Set 5/8"Ø rebar w/2"Ø aluminum cap PLS 15525



I hereby certify that this land surveying document was prepared and the related survey work was performed by me or under my direct personal supervision and that I am a duly licensed Land Surveyor under the laws of the State of Iowa.

Paul R. Herold 10-20-16
 Paul R. Herold Date:
 License number 15525
 My license renewal date is December 31, 2016.
 Sheets covered by this seal: Individual sheet only

List Corner to be Indexed			
Corner	Section	Twp.	Range
NW-NE-SW	4	95	11
Project Number: 2016-090			
FB: Lawier 1, Pgs. 18-19			

File: S:_CAD Projects\County Control Systems\CHICKASAW\CHICK-30 (Lawier)\CHICK-30.dwg, 10/20/2016 1:23:08 PM

UNITED STATES PUBLIC LAND SURVEY CORNER CERTIFICATE

OF

Land Survey Monuments situated in Section 4, Township 95 North, Range 11 West of the Fifth Principal Meridian, CHICKASAW County, Iowa. Previously recorded in none in County Recorder's Office.
(book, page, document number, etc.)

(Show reason for preparing this certificate, the evidence and detailed procedures used in establishing the corner positions and monumentation found or placed.)

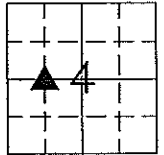
Monument Description and Remarks: NW Corner NE 1/4 - SW 1/4 Section 4 T95N R11W:
Set 1/2"φ rebar w/2"φ aluminum cap LS 7060 equidistant and on line between the Center and W 1/4 Corner.

PLAN - VIEW

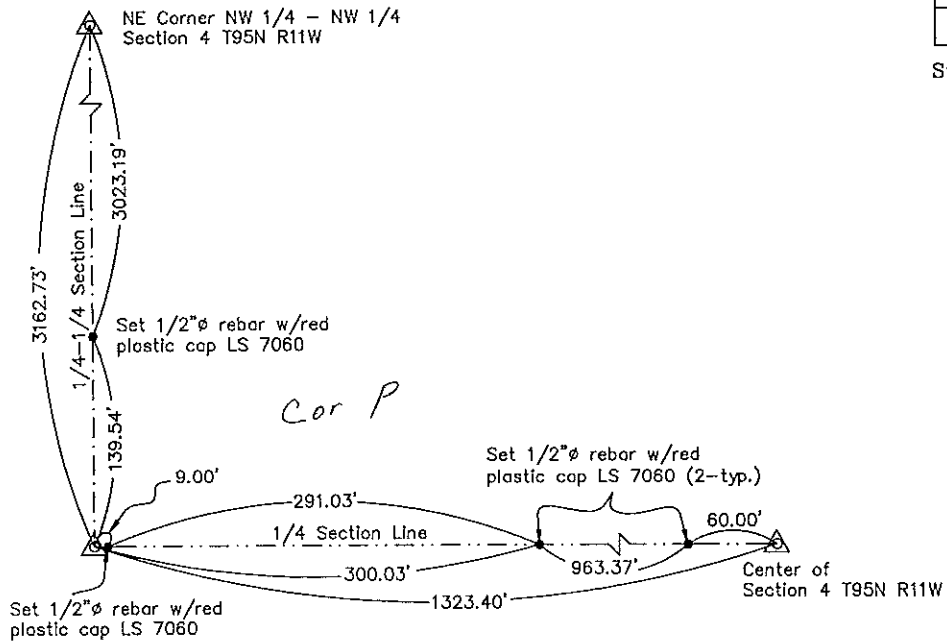
Project Number 00157.LS
 FB 46H PG. 4-17

(Show a minimum of three reference ties to durable physical objects, relevant monuments and physical conditions that will enable recovery of the corner.)

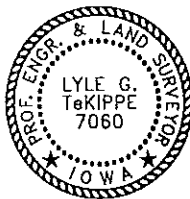
Sec. 4
 T95N
 R11W



Stapleton Twp.



NW Corner NE 1/4 - SW 1/4 Section 4 T95N R11W
 Set 1/2"φ rebar w/2"φ aluminum cap LS 7060



I hereby certify that this land surveying document was prepared and the related survey work was performed by me or under my direct personal supervision and that I am a duly licensed Land Surveyor under the laws of the State of Iowa.

Lyle G. TeKippe 9-6-00
 Lyle G. TeKippe Date
 License number 7060
 My license renewal date is December 31, 2000.
 Sheets covered by this seal Individual

List Corners to be Indexed			
Corners	Section	Twp.	Range
NW-NE-SW	4	95	11

2000-1555

Engineer's Copy