

DOCUMENT No. **1556** FILED FOR RECORD THE 7th DAY OF September 2000 AT 9:11 P.M. STATE OF IOWA, CHICKASAW COUNTY.
 RECORDING FEE \$ 6.00 BY Cindy Messersmith Recorder
 TRANSFER FEE \$ - O'CLOCK A.M. BOOK 2000 PAGE 1556 By CINDY MESSERSMITH Deputy

TeKIPPE ENGINEERING, P.C., 128 South Vine Street, West Union, Iowa 52175 Phone (319) 422-6131

UNITED STATES PUBLIC LAND SURVEY CORNER CERTIFICATE

OF

Land Survey Monuments situated in Section 4, Township 95 North, Range 11 West of the Fifth Principal Meridian, CHICKASAW County, Iowa.
 Previously recorded in none in County Recorder's Office.
 (book, page, document number, etc.)

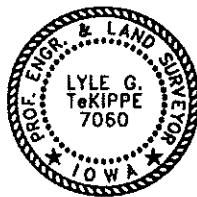
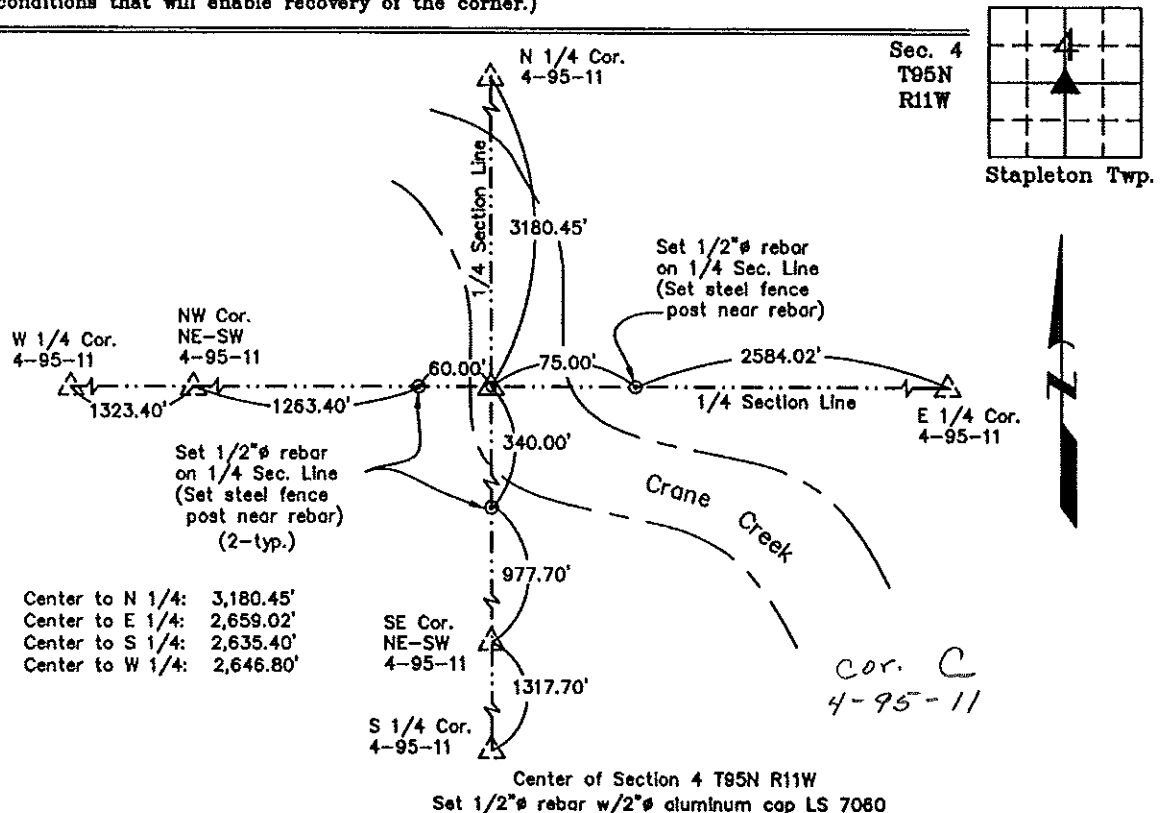
(Show reason for preparing this certificate, the evidence and detailed procedures used in establishing the corner positions and monumentation found or placed.)

Monument Description and Remarks: Center of Section 4 T95N R11W: Set 1/2" ø rebar w/2" ø aluminum cap LS 7060 at the intersection of the quarter section lines after the standard mathematical subdivision of Section 4.

PLAN - VIEW

Project Number 00158.15
 FB. 48H PG. 4-17

(Show a minimum of three reference ties to durable physical objects, relevant monuments and physical conditions that will enable recovery of the corner.)



I hereby certify that this land surveying document was prepared and the related survey work was performed by me or under my direct personal supervision and that I am a duly Licensed Land Surveyor under the laws of the State of Iowa.

Lyle G. TeKippe 9-6-00
 Lyle G. TeKippe Date
 License number 7060
 My license renewal date is December 31, 2000.
 Sheets covered by this seal: Individual

List Corners to be Indexed			
Corners	Section	Twp.	Range
Center	4	95N	11W