

2004 FEB 9 AM 9 14

CINDY MESSERSMITH
 COUNTY RECORDER

TeKIPPE ENGINEERING, P.C., 128 South Vine Street, West Union, Iowa 52175 Phone (563) 422-6131

UNITED STATES PUBLIC LAND SURVEY CORNER CERTIFICATE

OF

Land Survey Monuments situated in Section 4, Township 95 North, Range 11 West of the Fifth Principal Meridian, CHICKASAW County, Iowa.
 Previously recorded in none in County Recorder's Office.
 (book, page, document number, etc.)

(Show reason for preparing this certificate, the evidence and detailed procedures used in establishing the corner positions and monumentation found or placed.)

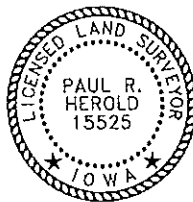
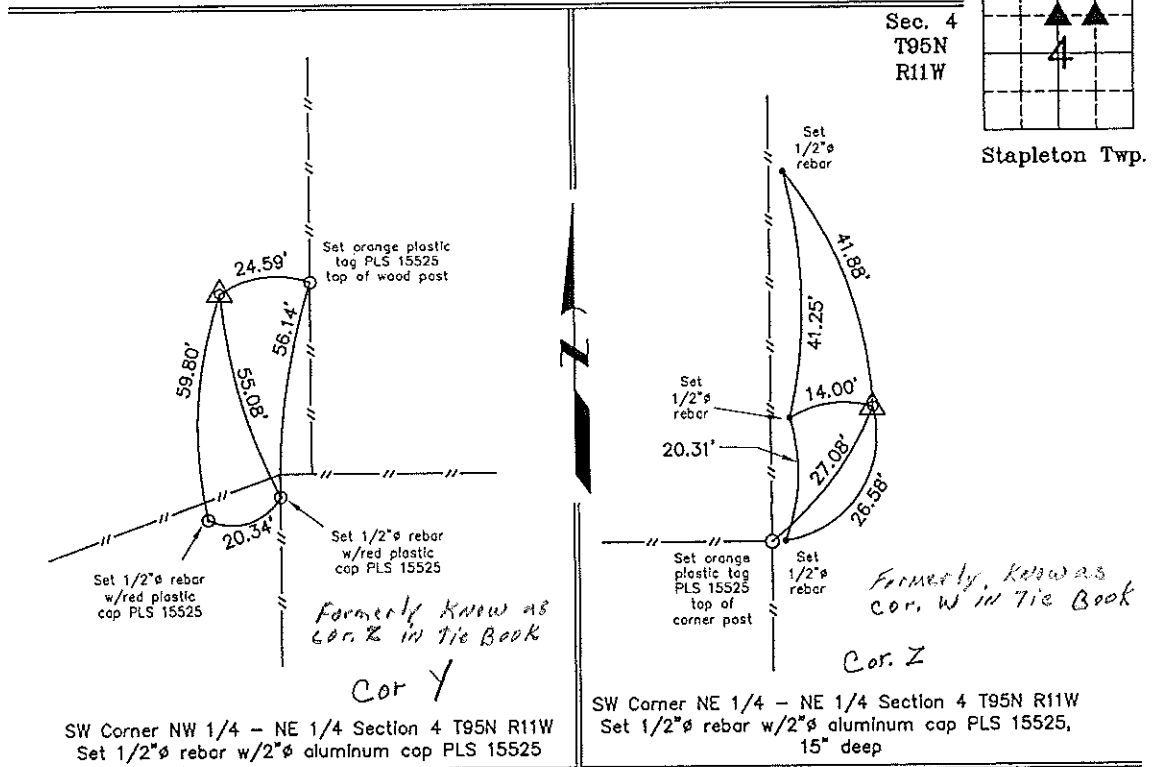
Monument Description and Remarks: **SW Corner NW 1/4 - NE 1/4 Section 4 T95N R11W:**
 Set 1/2" ϕ rebar w/2" ϕ aluminum cap PLS 15525 on line between the N 1/4 Corner and the Center of the Section using prorated distances.

SW Corner NE 1/4 - NE 1/4 Section 4 T95N R11W:

Set 1/2" ϕ rebar w/2" ϕ aluminum cap PLS 15525, 15" deep, at the intersection of 1/4-1/4 Section Lines after using prorated Government distances on the East Section Line and the North-South 1/4 Section Line.

PLAN - VIEW

(Show a minimum of three reference ties to durable physical objects, relevant monuments and physical conditions that will enable recovery of the corner.)



I hereby certify that this land surveying document was prepared and the related survey work was performed by me or under my direct personal supervision and that I am a duly licensed Land Surveyor under the laws of the State of Iowa.

Paul R. Herold 2-5-04
 Paul R. Herold Date
 License number 15525
 My license renewal date is December 31, 2004.
 Sheets covered by this seal: Individual

List Corners to be Indexed			
Corners	Section	Twp.	Range
SW-NW-NE	4	95N	11W
SW-NE-NE	4	95N	11W

Filed 2-11-04

X:\Section Corners\Sec. 04\4-95-11h1.dwg
 Project Number 04001.LS
 FB. 46K PG. 42-49