

# UNITED STATES PUBLIC LAND SURVEY CORNER CERTIFICATE

OF

Land Survey Monuments situated in Section 5, Township 95 N, Range 11 W, of the Fifth Principal Meridian, CHICKASAW County, Iowa. Previously recorded in (NONE) in County Recorder's Office.

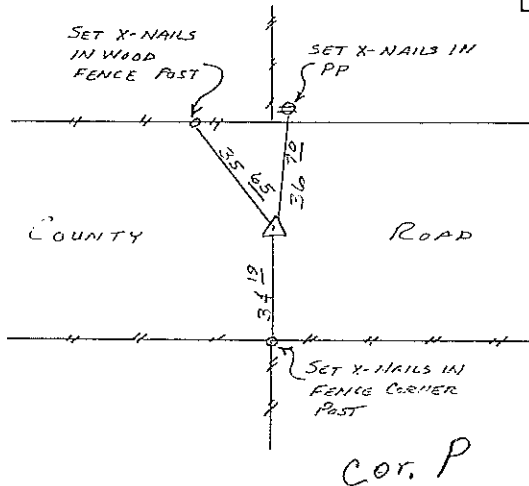
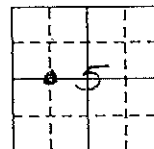
(book, page, document number, etc.)

(Show reason for preparing this certificate, the evidence and detailed procedures used in establishing the corner positions and monumentation found or placed.)

Monument Description and Remarks: SET 1/2" Ø REBAR WITH REG. CAP MIDWAY ON LINE BETWEEN NW 1/4 CORNER & CENTER OF SECTION

### PLAN - VIEW

(Show a minimum of three reference ties to durable physical objects, relevant monuments and physical conditions that will enable recovery of the corner.)



SW CORNER SE 1/4, NW 1/4 SECTION 5-95-11

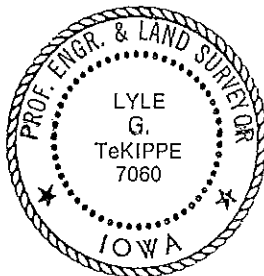
I hereby certify that the survey work was completed and this certificate was prepared by me or under my direct personal supervision and that I am a duly registered land surveyor under the laws of the state of Iowa.

Signature: Lyle G. TeKippe  
Name typed or printed: Lyle G. TeKippe

Date: 12-21-90 Reg. No. 7060

Corners	Section	Twp	Range
SW CORNER			
SE 1/4, NW 1/4	5	95	11

SEAL



146-210

"Engineer's Copy"