

Section 32-96-11
 As referred to in
 Engr. Tie Book

FILED 2004-0274
 RECORDER'S OFFICE
 CHICKASAW COUNTY, IOWA
 2004 FEB 9 AM 9 13
 CINDY MESSERSMITH
 COUNTY RECORDER

TEKIPPE ENGINEERING, P.C., 128 South Vine Street, West Union, Iowa 52175 Phone (563) 422-6131

UNITED STATES PUBLIC LAND SURVEY CORNER CERTIFICATE

OF
 Land Survey Monuments situated in Section 5³², Township 95⁹⁶ North, Range
11 West of the Fifth Principal Meridian, CHICKASAW County, Iowa.
 Previously recorded in none in County Recorder's Office.
 (book, page, document number, etc.)

(Show reason for preparing this certificate, the evidence and detailed procedures used in establishing the corner positions and monumentation found or placed.)

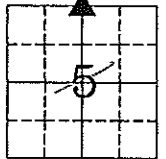
Monument Description and Remarks: N 1/4 Corner Section 5 T95N R11W: Set 1/2"Ø rebar w/2"Ø aluminum cap PLS 15525 at existing fence corner, position excepted as best remaining evidence of the corner as there is no record of the perpetuation of a monument at this corner position.

PLAN - VIEW

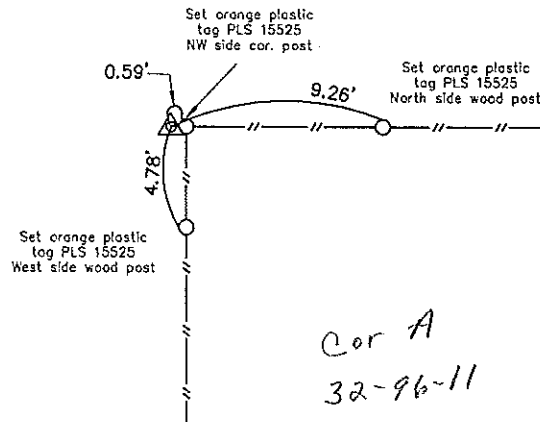
(Show a minimum of three reference ties to durable physical objects, relevant monuments and physical conditions that will enable recovery of the corner.)

Cor A
 Sec 32 - 96 - 11

Sec. 5
 T95N
 R11W

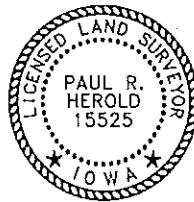


Stapleton Twp.



Cor A
 32-96-11

N 1/4 Corner Section 5 T95N R11W
 Set 1/2"Ø rebar w/2"Ø aluminum cap PLS 15525



I hereby certify that this land surveying document was prepared and the related survey work was performed by me or under my direct personal supervision and that I am a duly licensed Land Surveyor under the laws of the State of Iowa.

Paul R. Herold 2-5-04
 Paul R. Herold Date
 License number 15525
 My license renewal date is December 31, 2004.
 Sheets covered by this seal: Individual

List Corners to be Indexed			
Corners	Section	Twp.	Range
N 1/4	5	95N	11W

Filed 2-10-04

X:\Section Corners\Sec. 05\5-95-11c.dwg
 Project Number 04001.LS
 FB. 46K PG. 42-49

COUNTY ENGINEER'S
 COPY