

UNITED STATES PUBLIC LAND SURVEY CORNER CERTIFICATE

OF

Land Survey Monuments situated in Section 4, Township 95 North, Range 11 West of the Fifth Principal Meridian, CHICKASAW County, Iowa.

Previously recorded in none in County Recorder's Office.
(book, page, document number, etc.)

(Show reason for preparing this certificate, the evidence and detailed procedures used in establishing the corner positions and monumentation found or placed.)

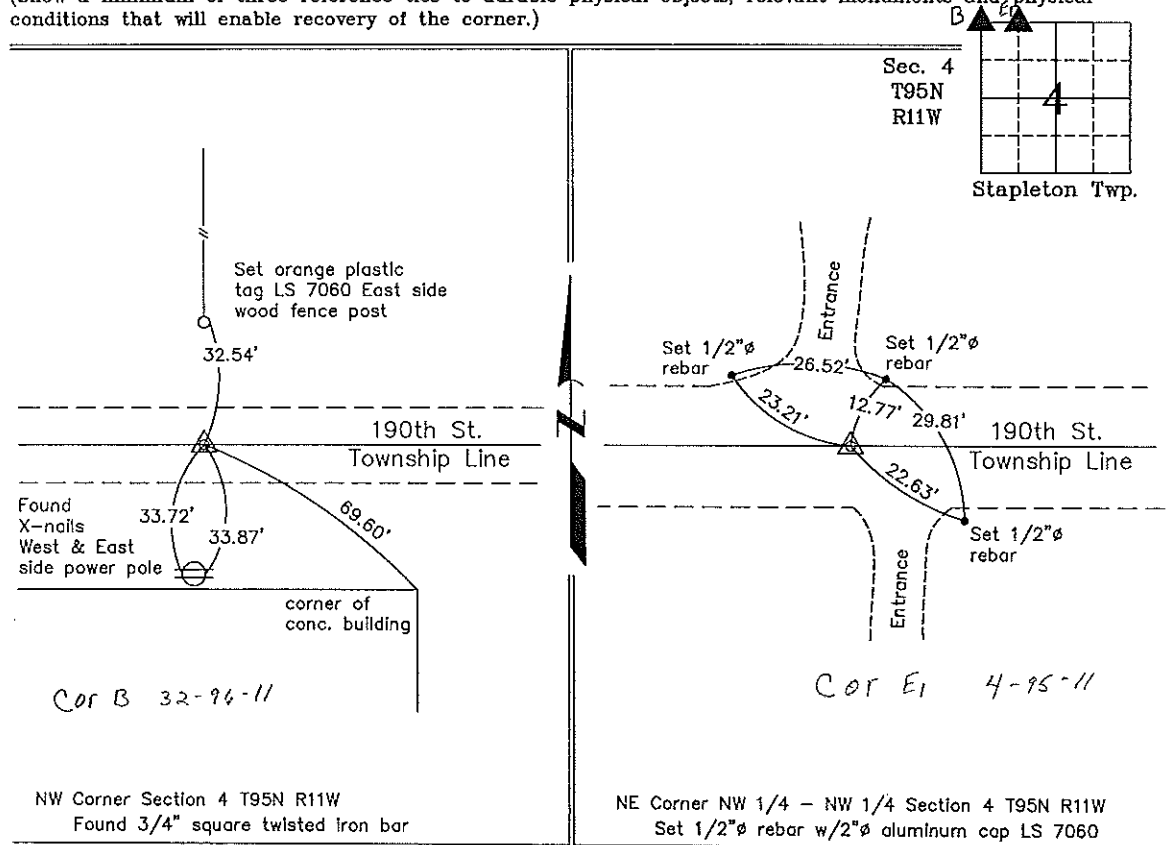
Monument Description and Remarks: NW Corner Section 4 T95N R11W: Found 3/4" square twisted iron bar with information obtained from the Chickasaw County Engineer's Office for Corner 'B', Section 32 T96N R11W.

NE Corner NW 1/4 - NW 1/4 Section 4 T95N R11W: Set 1/2"Ø rebar w/2"Ø aluminum cap LS 7060 equidistant and on line between the NW corner and the N 1/4 corner of Section 4.

PLAN - VIEW

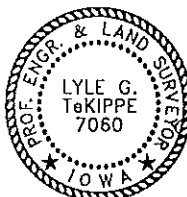
(Show a minimum of three reference ties to durable physical objects, relevant monuments and physical conditions that will enable recovery of the corner.)

Project Number 00158.18
FR 48H PG. 4-17



NW Corner Section 4 T95N R11W
Found 3/4" square twisted iron bar

NE Corner NW 1/4 - NW 1/4 Section 4 T95N R11W
Set 1/2"Ø rebar w/2"Ø aluminum cap LS 7060



I hereby certify that this land surveying document was prepared and the related survey work was performed by me or under my direct personal supervision and that I am a duly licensed Land Surveyor under the laws of the State of Iowa.

Lyle G. TeKippe 9-6-00
Lyle G. TeKippe Date
License number 7060
My license renewal date is December 31, 2000.
Sheets covered by this seal: Individual

List Corners to be Indexed			
Corners	Section	Twp.	Range
NW	4	95N	11W
Cor. B	32	96	11W
NE-NW-NW	4	95N	11W
Cor. E1			