

Prepared by & Return to: Herold - Reicks Surveying, 10 East Main Street, New Hampton, IA 50659, Ph. 64-394-2725

**UNITED STATES PUBLIC LAND SURVEY CORNER CERTIFICATE**

Land Survey Monuments situated in Section 6, Township 95 North, Range 11 West of the Fifth Principal Meridian, Chickasaw County, Iowa. Not previously recorded in the County Recorder's office.

This certificate is being prepared in compliance with Iowa Code Chapter 355.11 because:

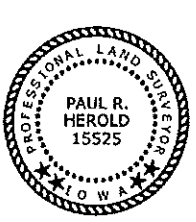
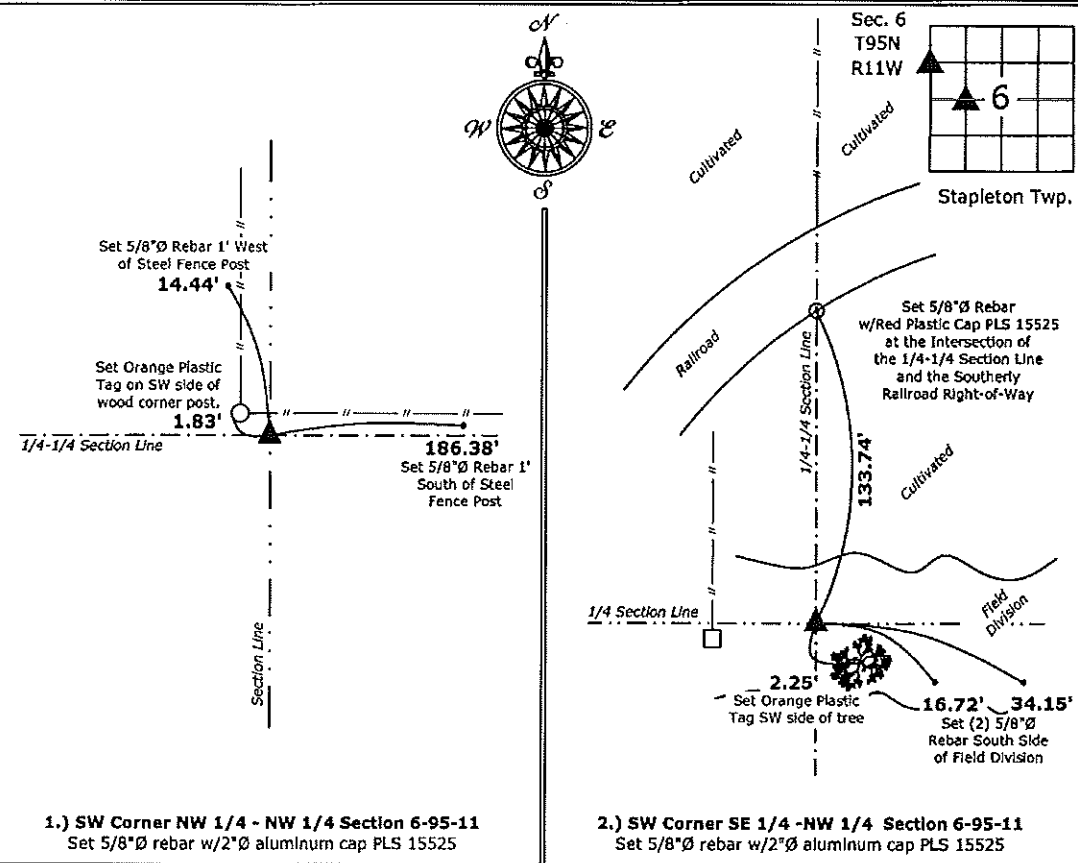
1 & 2  There is no certificate on file for this corner.  
 There are no longer three valid ties of record.  
 There are changes to reference ties of record.  
 There is change of monumentation of record.  
 To clarify description of record monument (ties).

**Monument Description and Remarks:**

- 1.) Southwest Corner NW 1/4 - NW 1/4:** Set 5/8"Ø rebar w/2"Ø aluminum cap PLS 15525 on the extension of an East-West Fence at the intersection with the West Line of the Northwest Quarter between the NW Corner and the W 1/4 Corner.
- 2.) Southwest Corner SE 1/4 - NW 1/4:** Set 5/8"Ø rebar w/2"Ø aluminum cap PLS 15525 on the extension of a North-South Fence at the intersection with the South Line of the Northwest Quarter between the Center and the W 1/4 Corner.

**PLAN - VIEW**

(Show a minimum of three reference ties to durable physical objects, relevant monuments and physical conditions that will enable recovery of the corner.)



I hereby certify that this land surveying document was prepared and the related survey work was performed by me or under my direct personal supervision and that I am a duly licensed Land Surveyor under the laws of the State of Iowa.

*Paul R. Herold 9-12-14*  
 Paul R. Herold Date:  
 License number 15525  
 My license renewal date is December 31, 2014.  
 Sheets covered by this seal: Individual sheet only

List Corners to be Indexed

Corners	Section	Twp.	Range
SW-NW-NW	6	95	11
SW-SE-NW	6	95	11

Project Number: 2014-144  
 FB: Lawler 1, Pgs. 10-11

File: S:\\_CAD Projects\County Control Systems\CHICKASAW\CHICK-30.dwg, 9/13/2014 2:30:34 PM