

>

Chickasaw Co. Recorder  
Cindy Messersmith  
**Fee Book 2008-0779**  
04/24/2008 @1019AM  
SCC SEC COR CERT  
Book; Page: # Pages: 1  
Total Fees: \$7.00

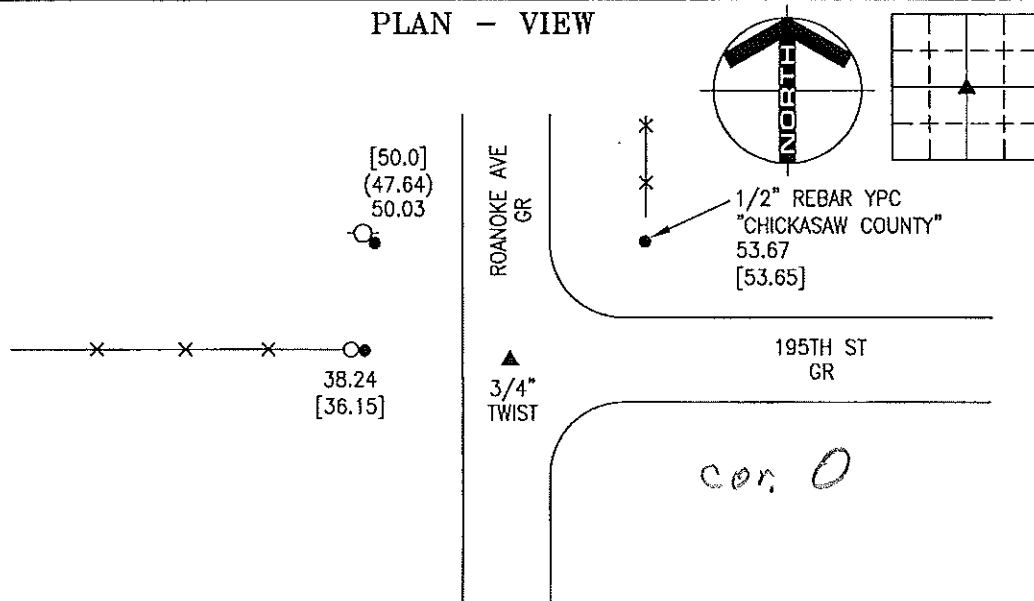
PREPARED BY: DARYL EIFFLER, 215 N ADAMS, MASON CITY, IOWA 50401, 641-424-6344

### UNITED STATES PUBLIC LAND SURVEY CORNER CERTIFICATE OF

Land Survey Monuments situated in Section 06, Township 95 NORTH, Range 11 WEST, of the Fifth Principal Meridian, CHICKASAW County, Iowa  
Previously recorded in BOOK 148, PAGE 172 AS DOC. NO. 00889 in County Recorder's Office.  
(book, page, document number)

Monument Description and Remarks: \_\_\_\_\_  
CENTER OF SECTION - FOUND 3/4" TWIST 0.6' DOWN AND 2' SOUTH OF FENCE RUNNING WEST USING  
CHICKASAW COUNTY ENGINEERING DEPARTMENT REFERENCE TIES.  
\_\_\_\_\_  
FOUND TIES AS SHOWN.

#### PLAN - VIEW



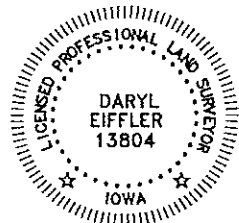
#### CENTER OF SECTION

#### LEGEND

- - UTILITY POLE
- × - EXISTING FENCE, FENCE POST
- ▲ - FOUND LAND CORNER
- △ - SET LAND CORNER
- - FOUND "X" NAILS UNLESS NOTED
- - SET REFERENCE TIES ARE A BRASS DISK STAMPED PLS 13804 UNLESS NOTED
- ACC- ASPHALT CEMENT CONCRETE SURFACING
- PCC- PORTLAND CEMENT CONCRETE SURFACING
- SRP- SURVEY REFERENCE POINT
- GR- GRAVEL SURFACING
- YPC- YELLOW PLASTIC CAP
- (00.00)- RECORDED DISTANCE
- [00.00]- COUNTY DISTANCE

PROJECT NO. 9635

FILE 951206



I HEREBY CERTIFY THAT THIS LAND SURVEYING DOCUMENT WAS PREPARED AND THE RELATED SURVEY WORK WAS PERFORMED BY ME OR UNDER MY DIRECT PERSONAL SUPERVISION AND THAT I AM A DULY LICENSED PROFESSIONAL LAND SURVEYOR UNDER THE LAWS OF THE STATE OF IOWA.

FOR YAGGY COLBY ASSOCIATES

*Daryl Eiffler* 4/14/08  
DARYL EIFFLER DATE  
LICENSE NUMBER 13804

MY LICENSE RENEWAL DATE IS DECEMBER 31, 2008 SHEETS COVERED BY THIS SEAL: 1

List Corners to be Indexed  
Corners Section Twp Range  
CTR 06 95N 11W

ENGINEERS • ARCHITECTS  
SURVEYORS • PLANNERS  
LANDSCAPE ARCHITECTS

215 NORTH ADAMS  
MASON CITY, IOWA 50401  
641-424-6344



UNITED STATES PUBLIC LAND SURVEY CORNER CERTIFICATE

OF

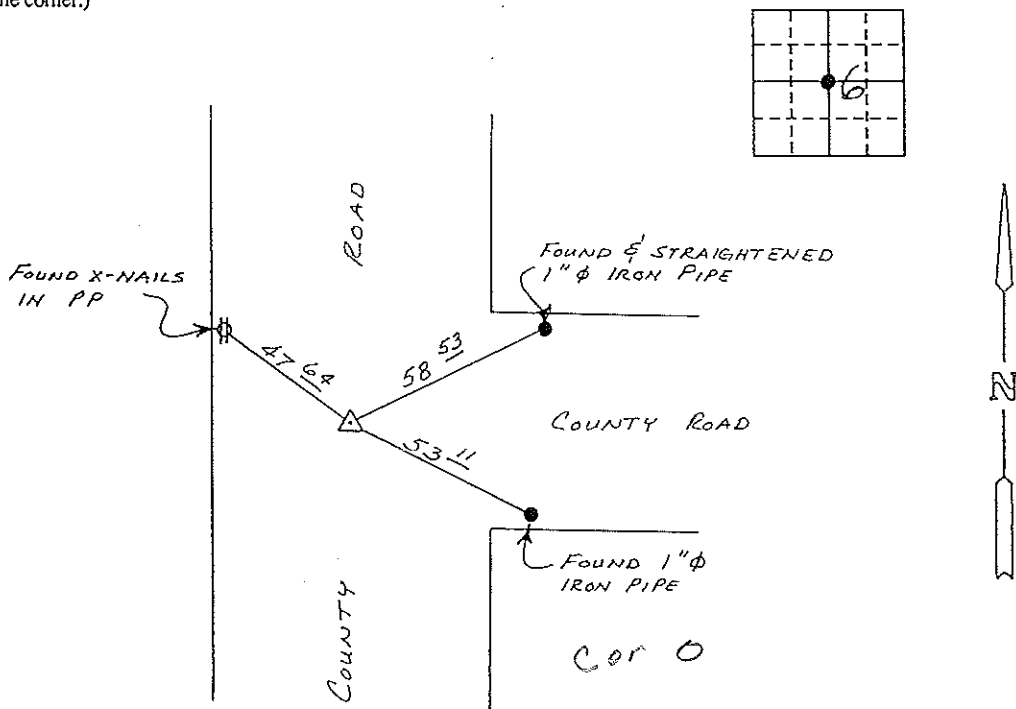
Land Survey Monuments situated in Section 6, Township 95 N, Range 11 W, of the Fifth Principal Meridian, CHICKASAW County, Iowa. Previously recorded in (NONE) in County Recorder's Office.

(book, page, document number, etc.)  
(Show reason for preparing this certificate, the evidence and detailed procedures used in establishing the corner positions and monumentation found or placed.)

Monument Description and Remarks: FOUND 1/2" SQUARE IRON PIN

PLAN - VIEW

(Show a minimum of three reference ties to durable physical objects, relevant monuments and physical conditions that will enable recovery of the corner.)



CENTER SECTION 6-T95N-R11W

I hereby certify that the survey work was completed and this certificate was prepared by me or under my direct personal supervision and that I am a duly registered land surveyor under the laws of the state of Iowa.

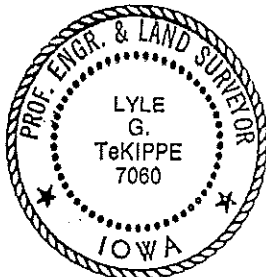
Signature: Lyle G. TeKippe  
Name typed or printed: Lyle G. TeKippe

Date: 10-23-91 Reg. No. 7060

Corners	List Corners to be Indexed Section	Twp	Range
CENTER	6	95 N	11 W

*Placed in the file 11/4/91*

SEAL



148-172

"County Engineers Copy"

Lyle Laartz  
7-8-78

Corner O Sec. 6-95-11

Corner O was found 7/8/78

The following ties were added:

