

Section 31-96-11  
As referred to in  
Engr. The Book

FILED 2002 - 2125  
RECORDER'S OFFICE  
CHICKASAW COUNTY, IOWA  
*See #600*  
2002 AUG 30 AM 10 33  
CINDY MOESSERSMITH  
COUNTY RECORDER

TeKIPPE ENGINEERING, P.C., 128 South Vine Street, West Union, Iowa 52176 Phone (563) 422-6131

UNITED STATES PUBLIC LAND SURVEY CORNER CERTIFICATE

OF 31 96

Land Survey Monuments situated in Section 6, Township 95 North, Range 11 West of the Fifth Principal Meridian, CHICKASAW County, Iowa.

Previously recorded in none in County Recorder's Office.  
(book, page, document number, etc.)

(Show reason for preparing this certificate, the evidence and detailed procedures used in establishing the corner positions and monumentation found or placed.)

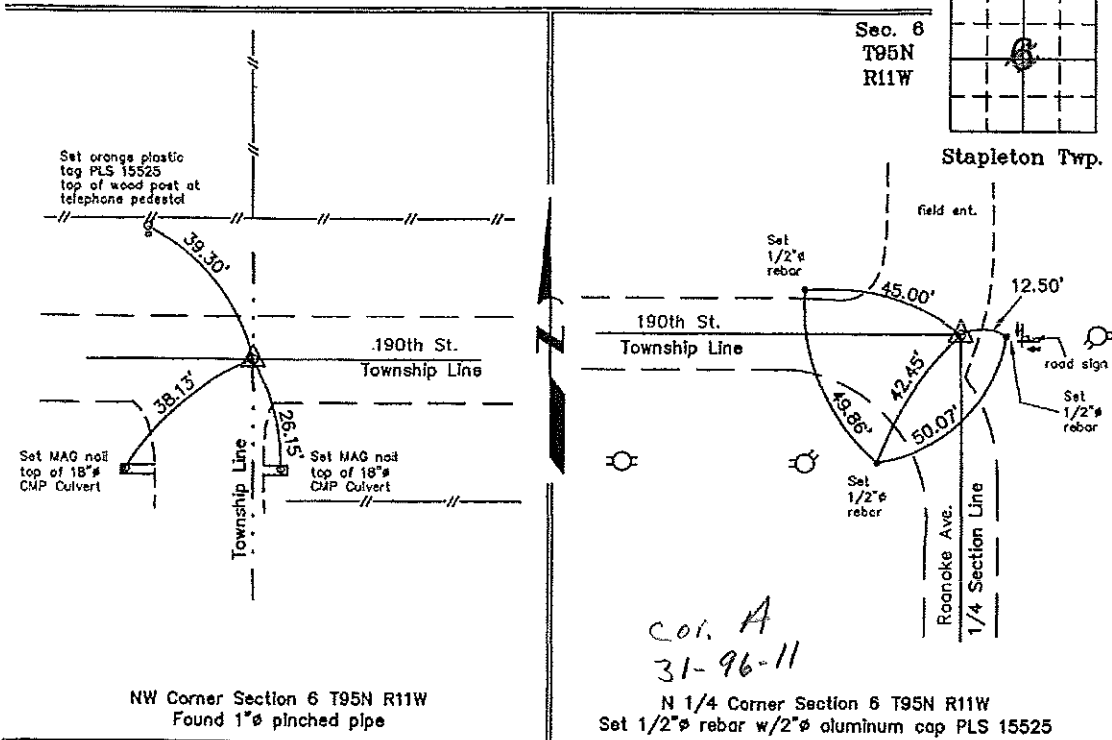
Monument Description and Remarks: NW Corner Section 6 T95N R11W: Found 1"Ø pinched pipe with information obtained from the Chickasaw County Engineer's Office in Field Book Jacksonville (South) Twp. Corner Ties, Section 36, Corner 'B'.

N 1/4 Section 6 T95N R11W: Set 1/2"Ø rebar w/2"Ø aluminum cap PLS 15525 by extending a line from the S 1/4 Corner through the Center of the Section and intersecting a line extended from the NW Corner through a position on the split of the ROW at 1/4-1/4 Section Line fences.

PLAN - VIEW

Project Number 02189.IS  
FB. 46J PG. 27-31, 34-38

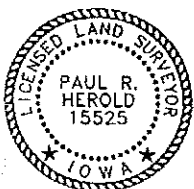
(Show a minimum of three reference ties to durable physical objects, relevant monuments and physical conditions that will enable recovery of the corner.)



NW Corner Section 6 T95N R11W  
Found 1"Ø pinched pipe

N 1/4 Corner Section 6 T95N R11W  
Set 1/2"Ø rebar w/2"Ø aluminum cap PLS 15525

*col. A  
31-96-11*



I hereby certify that this land surveying document was prepared and the related survey work was performed by me or under my direct personal supervision and that I am a duly licensed Land Surveyor under the laws of the State of Iowa.

*Paul R. Harold* 8-29-02  
Paul R. Harold Date  
License number 15525  
My license renewal date is December 31, 2002.  
Sheets covered by this seal: Individual

List Corners to be Indexed			
Corners	Section	Twp.	Range
NW	6	95N	11W
N 1/4	6	95N	11W