

Prepared by & Return to: Herold - Reicks Surveying, 10 East Main Street, New Hampton, IA 50659, Ph. 641-394-2725

**UNITED STATES PUBLIC LAND SURVEY CORNER CERTIFICATE**

Land Survey Monuments situated in Section 6, Township 95 North, Range 11 West of the Fifth Principal Meridian, Chickasaw County, Iowa. Not previously recorded in the County Recorder's office.

This certificate is being prepared in compliance with Iowa Code Chapter 355.11 because:

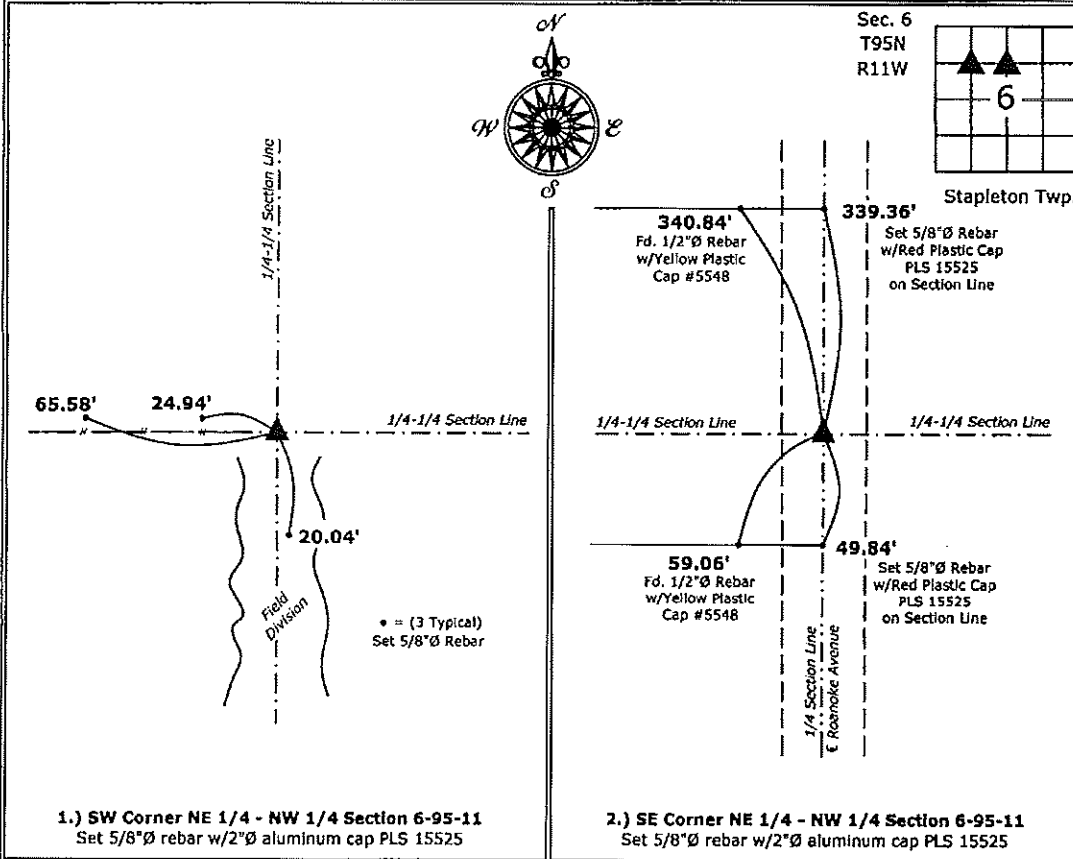
- 1 & 2  There is no certificate on file for this corner.  
 There are no longer three valid ties of record.  
 There are changes to reference ties of record.  
 There is change of monumentation of record.  
 To clarify description of record monument (ties).

Monument Description and Remarks:

- 1.) Southwest Corner NE 1/4 - NW 1/4:** Set 5/8"Ø rebar w/2"Ø aluminum cap PLS 15525 at the Intersection of and East-West Fence and a North-South Fence as the best remaining evidence of the Subdivision of the Fractional Northwest Quarter of the Section, this position was then utilized to re-establish the remaining missing Corners.
- 2.) Southeast Corner NE 1/4 - NW 1/4:** Set 5/8"Ø rebar w/2"Ø aluminum cap PLS 15525 on the extension of an East-West Fence at the Intersection with the East Line of the Northwest Quarter between the Ne Corner and the Center of the Section.

**PLAN - VIEW**

(Show a minimum of three reference ties to durable physical objects, relevant monuments and physical conditions that will enable recovery of the corner.)



1.) SW Corner NE 1/4 - NW 1/4 Section 6-95-11  
 Set 5/8"Ø rebar w/2"Ø aluminum cap PLS 15525

2.) SE Corner NE 1/4 - NW 1/4 Section 6-95-11  
 Set 5/8"Ø rebar w/2"Ø aluminum cap PLS 15525



I hereby certify that this land surveying document was prepared and the related survey work was performed by me or under my direct personal supervision and that I am a duly licensed Land Surveyor under the laws of the State of Iowa.  
*Paul R. Herold* 9-12-14  
 Paul R. Herold Date:  
 License number 15525  
 My license renewal date is December 31, 2014.  
 Sheets covered by this seal: Individual sheet only

List Corners to be Indexed			
Corners	Section	Twp.	Range
SW-NE-NW	6	95	11
SE-NE-NW	6	95	11

Project Number: 2014-144  
 FB: Lawler 1, Pgs. 10-11

File: S:\\_CSD Projects\County Control Systems\CHICKASAW\CHICK-30 (Lawler)\CHICK-30.dwg, 9/3/2014 2:30:42 PM

Herold - Recks Surveying, 10 East Main Street, New Hampton, IA 50659, Ph. 641-394-2725, Fax. 641-394-2718

### UNITED STATES PUBLIC LAND SURVEY CORNER CERTIFICATE

Land Survey Monuments situated in Section 6, Township 95 North, Range 12 West of the Fifth Principal Meridian, Chickasaw County, Iowa. 1.) Previously recorded in Bk. 169, Pg. 71 in the County Recorder's office, 2.) Previously not recorded in the County Recorder's office.

This certificate is being prepared in compliance with Iowa Code Chapter 355.11 because:



- 2.)  There is no certificate on file for this corner.
- There are no longer three valid ties of record.
- 1.)  There are changes to reference ties of record.
- 1.)  There is change of monumentation of record.
- To clarify description of record monument (ties).

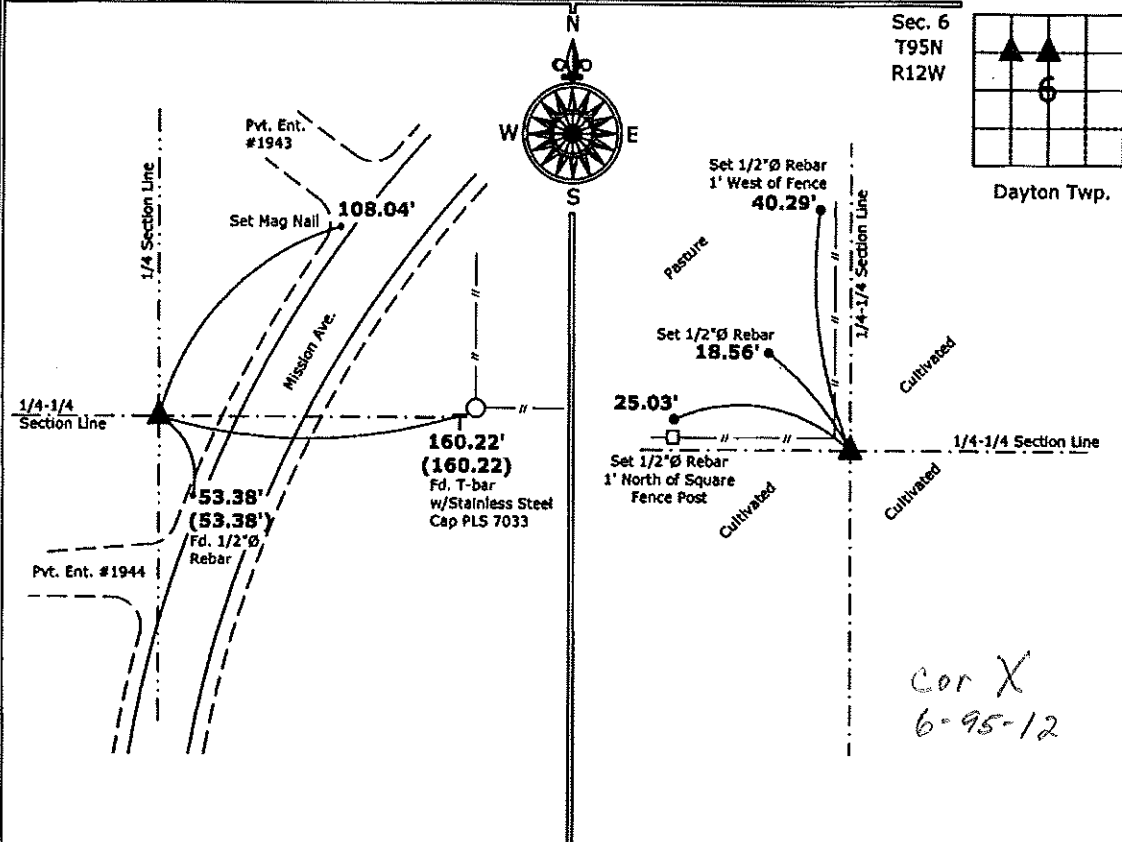
**Monument Description and Remarks:**

1.) **Southwest Corner NW 1/4-NE 1/4:** Set 5/8"Ø rebar w/2"Ø aluminum cap PLS 15525 from information obtained from previous Section Corner Certificate.

2.) **Northeast Corner SW 1/4-NW 1/4:** Found 1/2"Ø rebar w/yellow plastic cap PLS 11442 matching position calculated from the M-P Subdivision geometry

#### PLAN - VIEW

(Show a minimum of three reference ties to durable physical objects, relevant monuments and physical conditions that will enable recovery of the corner.)



1.) **Southwest Corner NW 1/4-NE 1/4 Section 6-95-12**  
 Set 5/8"Ø rebar w/2"Ø aluminum cap PLS 15525

2.) **Northeast Corner SW 1/4-NW 1/4 Section 6-95-12**  
 Found 1/2"Ø rebar w/yellow plastic cap PLS 11442

Cor X  
6-95-12



I hereby certify that this land surveying document was prepared and the related survey work was performed by me or under my direct personal supervision and that I am a duly licensed Land Surveyor under the laws of the State of Iowa.

*Paul R. Herold* 5-27-10  
 Paul R. Herold Date:

License number 15525  
 My license renewal date is December 31, 2010.  
 Sheets covered by this seal: Individual sheet only

List Corners to be Indexed			
Corners	Section	Twp.	Range
SW-NW-NE	6	95	12
NE-SW-NW	6	95	12

Project Number: 2010-055  
 FB: Chickasaw County 3, Pgs.