

*Herold - Reicks Surveying, 10 East Main Street, New Hampton, IA 50659, Ph. 641-394-2725, Fax. 641-394-2778*

### UNITED STATES PUBLIC LAND SURVEY CORNER CERTIFICATE

Land Survey Monuments situated in Section 7, Township 95 North, Range 12 West of the Fifth Principal Meridian, **Chickasaw** County, Iowa. Previously recorded in Bk. 148, Pg. 135 in the **Chickasaw** County Recorder's office.

This certificate is being prepared in compliance with Iowa Code Chapter 355.11 because:

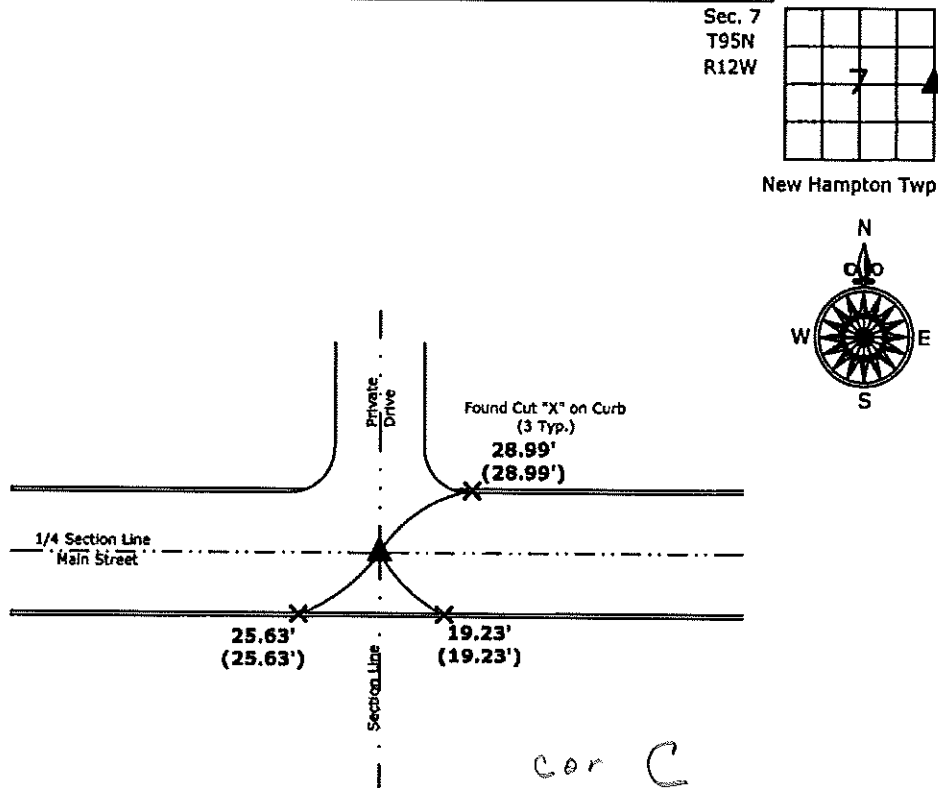
- There is no certificate on file for this corner.
- There are no longer three valid ties of record.
- There are changes to reference ties of record.
- There is change of monumentation of record.
- To clarify description of record monument (ties).

Monument Description and Remarks:

**East 1/4 Corner:** Found Survey Mark Nail w/1.5"Ø I.D.O.T. stainless steel washer with information obtained from previous Section Corner Certificate.

#### PLAN - VIEW

(Show a minimum of three reference ties to durable physical objects, relevant monuments and physical conditions that will enable recovery of the corner.)



**East 1/4 Corner Section 7-95-12**  
 Found Survey Mark Nail w/1.5"Ø I.D.O.T. stainless steel washer



I hereby certify that this land surveying document was prepared and the related survey work was performed by me or under my direct personal supervision and that I am a duly licensed Land Surveyor under the laws of the State of Iowa.

*Kirk D. Reicks* 5-28-10  
 Kirk D. Reicks Date:

License number 19211  
 My license renewal date is December 31, 2010.  
 Sheets covered by this seal: Individual sheet only

List Corners to be Indexed			
Corners	Section	Twp.	Range
E 1/4	7	95	12

Project Number: 2010-026  
 FB: New Hampton 1, Pg. 38

Section 7-95-11  
As referred to in  
Engl. Tit. Book

FILED 2002-2057  
RECORDER'S OFFICE  
CHICKASAW COUNTY, IOWA

2002 AUG 26 AM 9 29

GINDY MESSERSMITH  
COUNTY RECORDER

TeKIPPE ENGINEERING, P.C., 128 South Vine Street, West Union, Iowa 52176 Phone (563) 422-5131

UNITED STATES PUBLIC LAND SURVEY CORNER CERTIFICATE

OF 8<sup>7</sup>  
Land Survey Monuments situated in Section 8, Township 95 North, Range 11 West of the Fifth Principal Meridian, CHICKASAW County, Iowa.  
Previously recorded in none in County Recorder's Office.  
(book, page, document number, etc.)

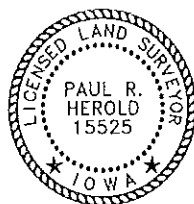
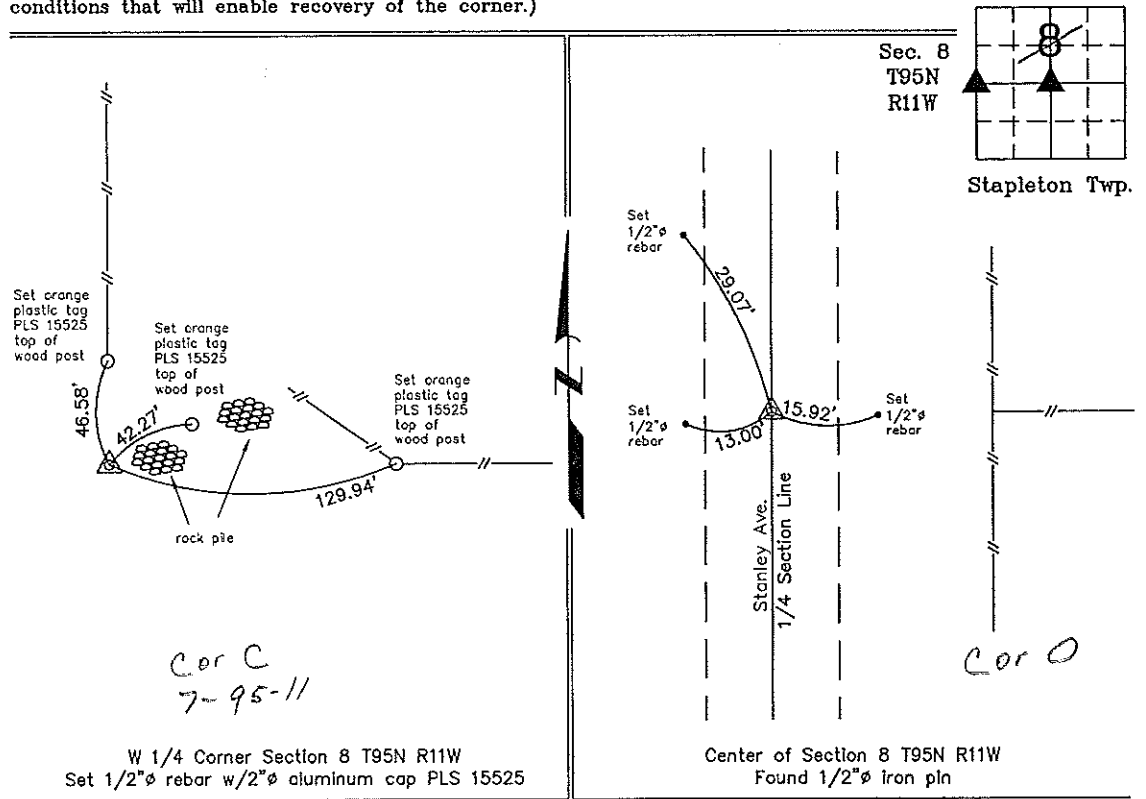
(Show reason for preparing this certificate, the evidence and detailed procedures used in establishing the corner positions and monumentation found or placed.)

Monument Description and Remarks: **W 1/4 Corner Section 8 T95N R11W:** Set 1/2"  $\phi$  rebar w/2"  $\phi$  aluminum cap PLS 15525 at intersection of fence extensions after the the search for the original stone was abandoned due to the rock piles that had accumulated over time making it virtually impossible to tell which one was correct.  
**Center of Section 8 T95N R11W:** Found 1/2"  $\phi$  iron pin on a line fence in the center of Stanley Ave. found from information obtained from the County Engineer's office in Fieldbook Stapleton Twp. corner ties, corner "O"

PLAN - VIEW

Project Number 02200.LS  
FB. 46J PG. 27-31, 34-36

(Show a minimum of three reference ties to durable physical objects, relevant monuments and physical conditions that will enable recovery of the corner.)



I hereby certify that this land surveying document was prepared and the related survey work was performed by me or under my direct personal supervision and that I am a duly licensed Land Surveyor under the laws of the State of Iowa.

Paul R. Herold 8-22-02  
Paul R. Herold Date

License number 15525  
My license renewal date is December 31, 2002.  
Sheets covered by this seal: Individual

List Corners to be Indexed			
Corners	Section	Twp.	Range
W 1/4	8	95N	11W
Center	8	95N	11W

Filed 9-5-02

X:\Section Corners\Sec. 08\8-95-11km.dwg

County Engineer  
Date