

UNITED STATES PUBLIC LAND SURVEY CORNER CERTIFICATE

OF

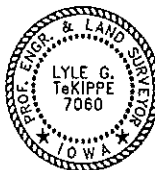
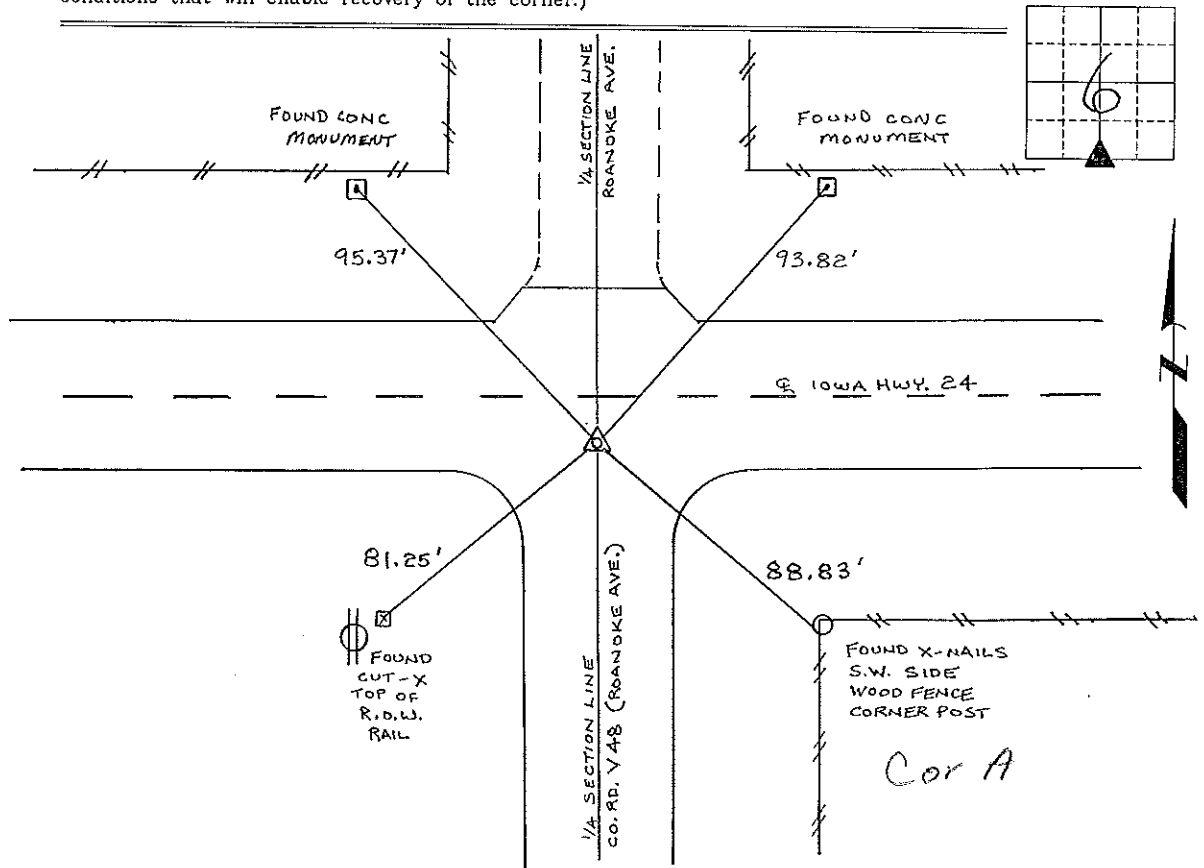
Land Survey Monuments situated in Section 6, Township 95 North, Range 11 West, of the Fifth Principal Meridian, CHICKASAW County, Iowa. Previously recorded in DEEDS BOOK 148, PAGE 170 in County Recorder's Office.  
(book, page, document number, etc.)

(Show reason for preparing this certificate, the evidence and detailed procedures used in establishing the corner positions and monumentation found or placed.)

Monument Description and Remarks: S 1/4 CORNER SECTION 6 T 95 N R 11 W: FOUND LEAD PLUG IN CONC SLAB 0.4' DEEP IN THE CENTER OF A 4" Ø HOLE IN THE AC MAT, THE ORIGINAL I.D.O.T. ALUMINUM MONUMENT IS GONE.

PLAN - VIEW

(Show a minimum of three reference ties to durable physical objects, relevant monuments and physical conditions that will enable recovery of the corner.)



I hereby certify that this land surveying document was prepared and the related survey work was performed by me or under my direct personal supervision and that I am a duly licensed Land Surveyor under the laws of the State of Iowa.

*Lyle G. TeKippe* 11-7-97  
 Lyle G. TeKippe Date  
 License number 7060  
 My license renewal date is December 31, 1998.  
 Sheets covered by this seal: Individual

List Corners to be Indexed			
Corners	Section	Twp.	Range
S 1/4	6	95 N	11 W

*Cor A  
 6-95-11  
 Placed in the  
 Book 11/12/97*

# UNITED STATES PUBLIC LAND SURVEY CORNER CERTIFICATE

OF

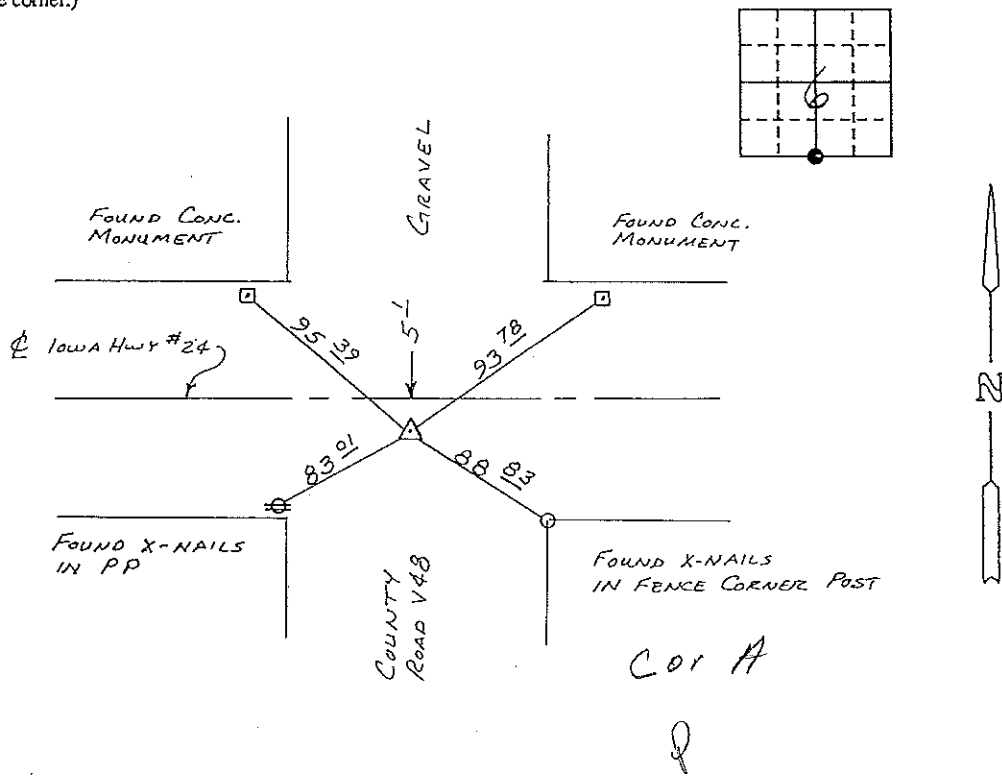
Land Survey Monuments situated in Section 6, Township 95 N, Range 11 W, of the Fifth Principal Meridian, CHICKASAW County, Iowa. Previously recorded in (NONE) in County Recorder's Office.

(book, page, document number, etc.)  
(Show reason for preparing this certificate, the evidence and detailed procedures used in establishing the corner positions and monumentation found or placed.)

Monument Description and Remarks: FOUND IDOT ALUMINUM CAP IN ASPHALT

### PLAN - VIEW

(Show a minimum of three reference ties to durable physical objects, relevant monuments and physical conditions that will enable recovery of the corner.)



S 1/4 CORNER SECTION 6 - T95N - R11W

I hereby certify that the survey work was completed and this certificate was prepared by me or under my direct personal supervision and that I am a duly registered land surveyor under the laws of the state of Iowa.

Signature: Lyle G. TeKippe  
Name typed or printed: Lyle G. TeKippe  
Date: 10-23-91 Reg. No. 7060

Corners	List Corners to be Indexed Section	Twp	Range
S 1/4	6	95 N	11 W

*Placed in Tax Books*

SEAL

