

Section 6-95-11
As referred to in
Engr. Tic Book

UNITED STATES PUBLIC LAND SURVEY CORNER CERTIFICATE

OF
Land Survey Monuments situated in Section 56, Township 95 North, Range 11 West of the Fifth Principal Meridian, CHICKASAW County, Iowa.
Previously recorded in none in County Recorder's Office.
(book, page, document number, etc.)

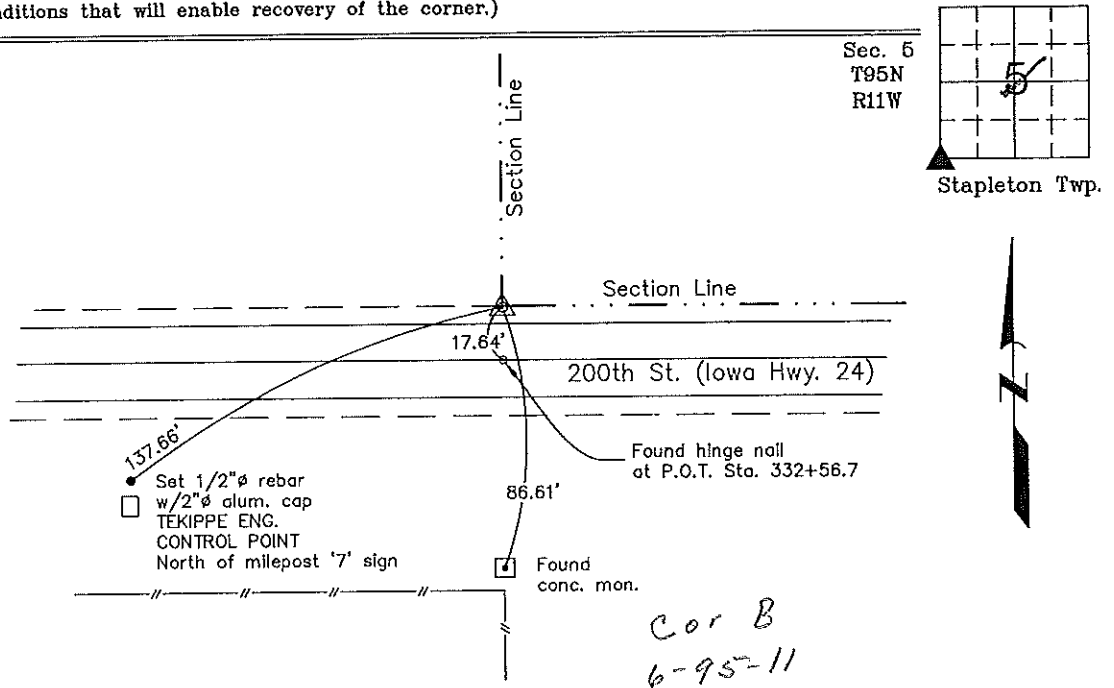
(Show reason for preparing this certificate, the evidence and detailed procedures used in establishing the corner positions and monumentation found or placed.)

Monument Description and Remarks: SW Corner Section 5 T95N R11W: Found 1/2" square twisted iron bar with information obtained from the Right-of-Way Map made for the Iowa State Highway Commission for Primary Road No. 24 Chickasaw County, Iowa, Project FA 357C.

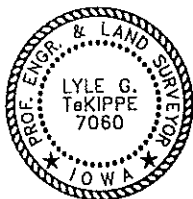
PLAN - VIEW

Project Number 000168.13
FR 48H PG. 4-17

(Show a minimum of three reference ties to durable physical objects, relevant monuments and physical conditions that will enable recovery of the corner.)



SW Corner Section 5 T95N R11W
Found 1/2" square twisted iron bar



I hereby certify that this land surveying document was prepared and the related survey work was performed by me or under my direct personal supervision and that I am a duly licensed Land Surveyor under the laws of the State of Iowa.

Lyle G. TeKippe 9-6-00
Lyle G. TeKippe Date
License number 7060
My license renewal date is December 31, 2000.
Sheets covered by this seal: Individual

List Corners to be Indexed			
Corners	Section	Twp.	Range
SW	5	95N	11W
Cor B	6		

2000-1561

Engineer's Copy