

Prepared by & Return to: Herold - Reicks Surveying, 10 East Main Street, New Hampton, IA 50655, Ph. 641-394-2725

UNITED STATES PUBLIC LAND SURVEY CORNER CERTIFICATE

Land Survey Monuments situated in Section **9**, Township **95 North**, Range **11 West** of the Fifth Principal Meridian, **Chickasaw** County, Iowa. **1., 2.)** Not previously recorded in the County Recorder's office.

This certificate is being prepared in compliance with Iowa Code Chapter 355.11 because:

- 1 & 2 There is no certificate on file for this corner.
- There are no longer three valid ties of record.
- There are changes to reference ties of record.
- There is change of monumentation of record.
- To clarify description of record monument (ties).

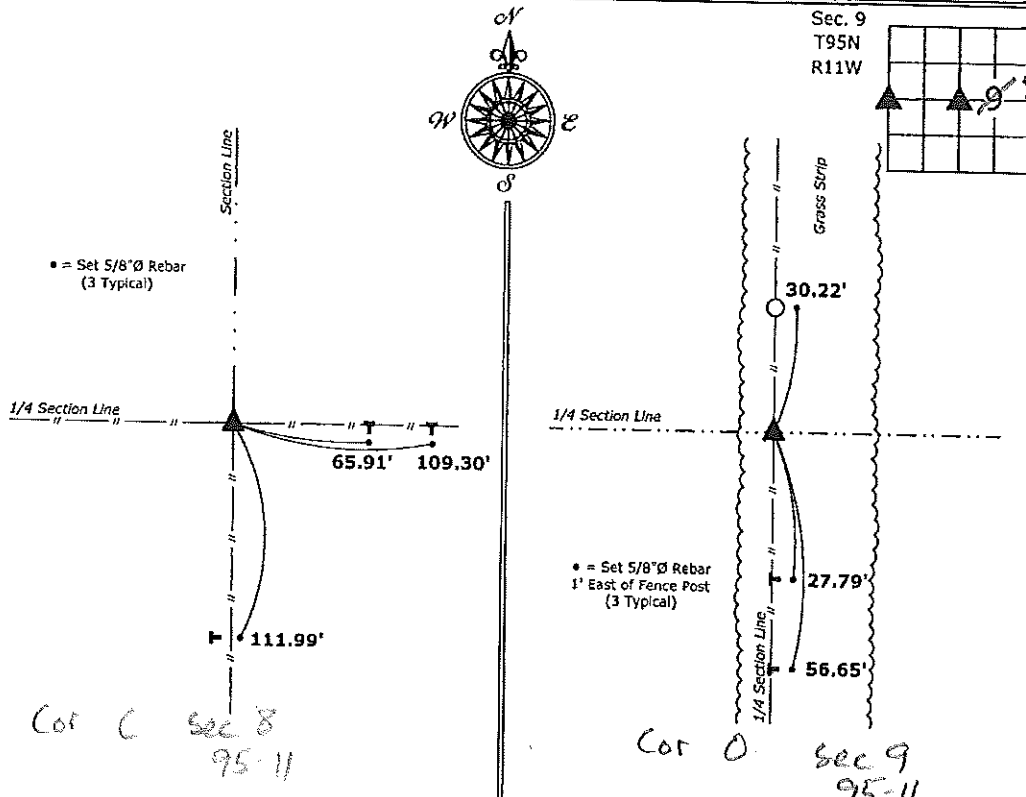
Monument Description and Remarks:

1.) West 1/4 Corner: Set 5/8"Ø rebar w/2"Ø aluminum cap PLS 19211 at the intersection of possession line fences running from the East, West, and South.

2.) Center: Set 5/8"Ø rebar w/2"Ø aluminum cap PLS 19211 at the intersection of Quarter Section Lines; there is no record of the perpetuation of a monument at this corner.

PLAN - VIEW

(Show a minimum of three reference ties to durable physical objects, relevant monuments and physical conditions that will enable recovery of the corner.)



1.) West 1/4 Corner Section 9-95-11
 Set 5/8"Ø rebar w/2"Ø aluminum cap PLS 19211

2.) Center of Section 9-95-11
 Set 5/8"Ø rebar w/2"Ø aluminum cap PLS 19211



I hereby certify that this land surveying document was prepared and the related survey work was performed by me or under my direct personal supervision and that I am a duly licensed Land Surveyor under the laws of the State of Iowa.
Kirk D. Reicks 6-8-15
 Kirk D. Reicks Date:
 License number 19211
 My license renewal date is December 31, 2016.
 Sheets covered by this seal: Individual sheet only

List Corners to be Indexed			
Corners	Section	Twp.	Range
W 1/4	9	95	11
CTR	9	95	11

Project Number: 2015-079
 FB: Chickasaw County 7, Pgs. 33, 35

File: S:_C3D Projects\County Control Systems\CHICKASAW\CHICK-30 (Lawier)\CHICK-30.dwg, 6/8/2015 12:20:34 PM