

Section 5-95-11
As referred to in
Engl. Tie Book

TEKIPPE ENGINEERING, P.C., 128 South Vine Street, West Union, Iowa 52175 Phone (319) 422-5131

UNITED STATES PUBLIC LAND SURVEY CORNER CERTIFICATE

OF

Land Survey Monuments situated in Section 8, Township 95 North, Range 11 West, of the Fifth Principal Meridian, CHICKASAW County, Iowa. Previously recorded in NONE in County Recorder's Office.

(book, page, document number, etc.)

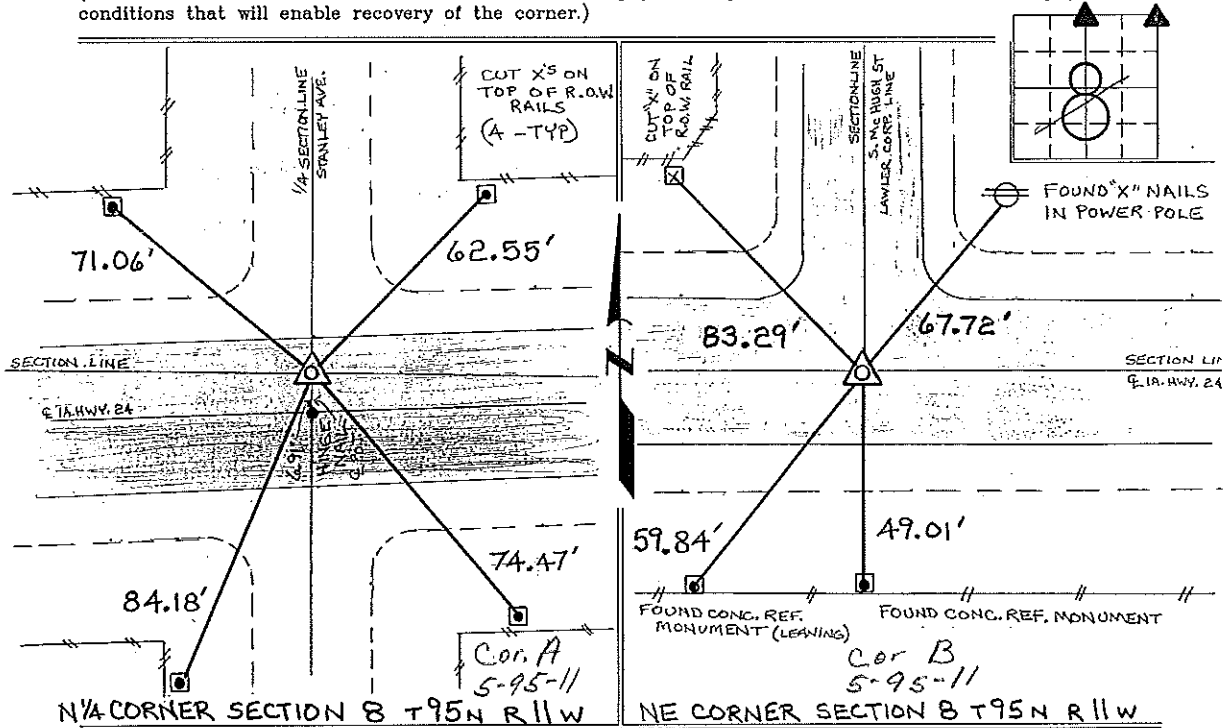
(Show reason for preparing this certificate, the evidence and detailed procedures used in establishing the corner positions and monumentation found or placed.)

Monument Description and Remarks: N 1/4 CORNER SECTION 8 T95N R11W: FOUND A 3" Ø I.D.O.T. ALUM. MONU. 6.91' NORTH OF IA HWY 24 P.O.T. STA. 359+13.1 (HINGE NAIL) AS DESCRIBED AND MATCHING TIES OBTAINED FROM IOWA D.O.T. R.O.W. & PLANS DEPARTMENTS, AMES, IA.

NE CORNER SECTION 8 T95N R11W: FOUND HINGE NAIL & OF IA HWY 24 = PI STA. 385+83.1 MATCHING TIES OBTAINED FROM IOWA D.O.T. R.O.W. & PLANS DEPARTMENTS, AMES, IA.

PLAN - VIEW

(Show a minimum of three reference ties to durable physical objects, relevant monuments and physical conditions that will enable recovery of the corner.)



I hereby certify that the survey work was completed and this certificate was prepared by me or under my direct personal supervision and that I am a duly registered land surveyor under the laws of the state of Iowa.

Signature: Lyle G. Tekippe
Lyle G. Tekippe
Date: 1-29-96 Reg. No. 7060
My Registration Renewal Date is December 31, 1998

Seal



List Corners to be Indexed			
Corners	Section	Twp.	Range
N 1/4	8	95N	11W
NE	8	95N	11W

Placed in tie Book
3/4/96