

Chickasaw Co. Recorder
 Cindy Messersmith
Fee Book 2016-1369
 10/13/2016 @0925AM
 SCC SEC COR CERT
 Book: Page: # Pages: 1
 Total Fees: \$7.00

Prepared by & Return to: Herold - Reicks Surveying, 10 East Main Street, New Hampton, IA 50659, Ph. 641-394-2725

UNITED STATES PUBLIC LAND SURVEY CORNER CERTIFICATE

Land Survey Monuments situated in Section 5, Township 95 North, Range 11 West of the Fifth Principal Meridian, Chickasaw County, Iowa. Previously recorded in Bk. 166, Pg. 349 in the County Recorder's office.

This certificate is being prepared in compliance with Iowa Code Chapter 355.11 because:

- There is no certificate on file for this corner.
- There are no longer three valid ties of record.
- There are changes to reference ties of record.
- There is change of monumentation of record.
- To clarify description of record monument (ties).

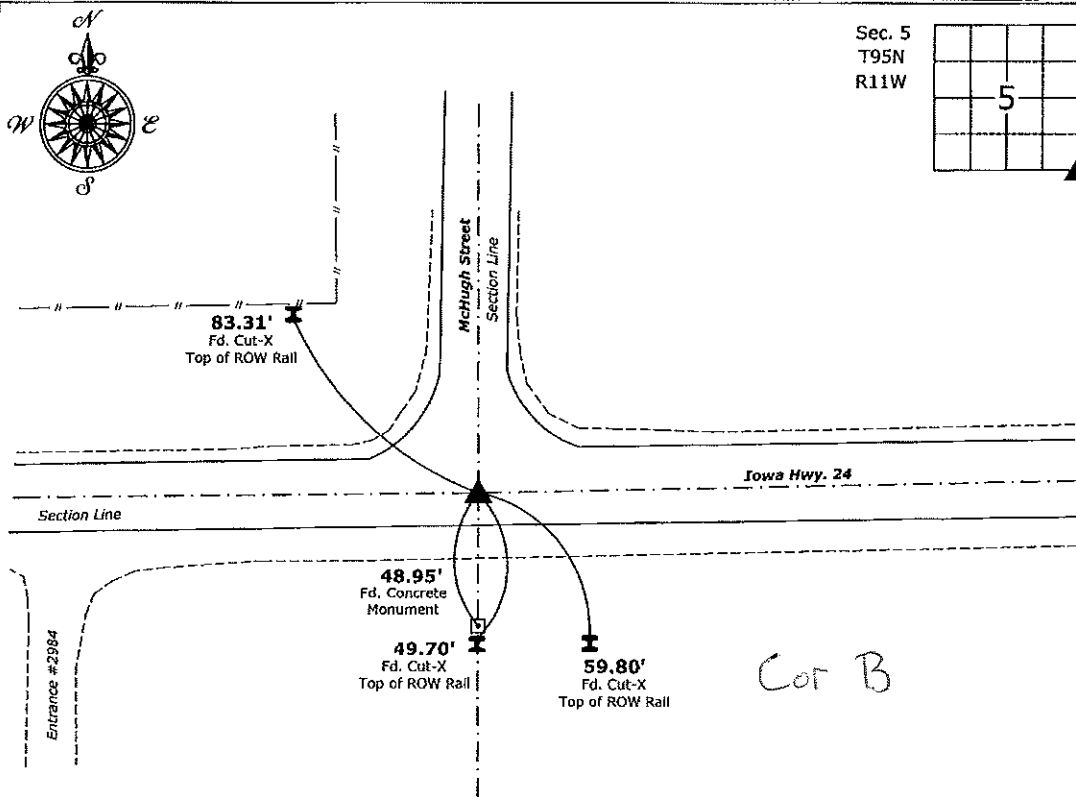
Monument Description and Remarks:

SE Corner: Fd. Survey Mark Nail w/Stainless Steel Washer I.D.O.T.

The previous monument was covered by an HMA overlay project and re-monumented by the Iowa Department of Transportation, current monument corresponded's to previous ties.

PLAN - VIEW

(Show a minimum of three reference ties to durable physical objects, relevant monuments and physical conditions that will enable recovery of the corner.)



SE Corner Section 5-95-11
 Fd. Survey Mark Nail w/Stainless Steel Washer I.D.O.T.



I hereby certify that this land surveying document was prepared and the related survey work was performed by me or under my direct personal supervision and that I am a duly licensed Land Surveyor under the laws of the State of Iowa.

Paul R. Herold 10-10-16
 Paul R. Herold Date:
 License number 15525
 My license renewal date is December 31, 2016.
 Sheets covered by this seal: Individual sheet only

List Corners to be Indexed			
Corners	Section	Twp.	Range
SE	5	95	11
Project Number: 2016-135			
FB: Lawler 1, Pg. 17			

File: S:_C3D Projects\County Control Systems\CHICKASAW\CHICK-30 (Lawler)\CHICK-30.dwg, 10/10/2016 1:33:19 PM

UNITED STATES PUBLIC LAND SURVEY CORNER CERTIFICATE

OF

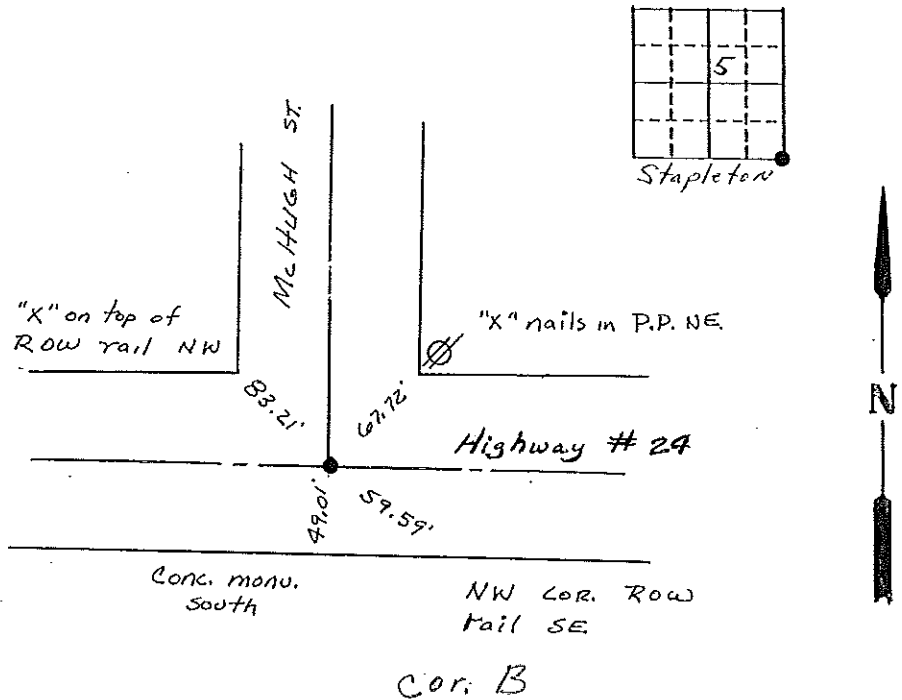
Land Survey Monuments situated in Section 5, Township 95 North, Range 11 WEST, of the Fifth Principal Meridian, CHICKASAW County, Iowa. Previously recorded in N/A in County Recorder's Office.

(Show reason for preparing this certificate, the evidence and detailed procedures used in establishing the corner positions and monumentation found or placed.)

Monument Description and Remarks: Found nail in center of paving on Highway #24. Checked nail location with County ties.

PLAN - VIEW

(Show a minimum of three reference ties to durable physical objects, relevant monuments and physical conditions that will enable recovery of the corner.)



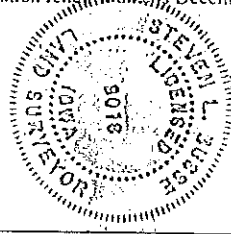
I hereby certify that the survey work was completed and this land surveying document was prepared by me or under my direct personal supervision and that I am a duly registered land surveyor under the laws of the state of Iowa

Signature: Steve Busse
Name typed or printed: STEVE BUSSE

Date: 1/28/98 Reg. No. 9018

My registration renews on December 31, 1998

SEAL



Corners	List Corners to be Indexed Section	Twp	Range
SE COR	5	95	11

Cor B 5-95-11

Placed in tie book 2/5/98

JFM

Section 5-95-11
As referred to in
Engl. Tie Book

TEKIPPE ENGINEERING, P.C., 128 South Vine Street, West Union, Iowa 52175 Phone (319) 422-5131

UNITED STATES PUBLIC LAND SURVEY CORNER CERTIFICATE

OF

Land Survey Monuments situated in Section 8, Township 95 North, Range 11 West, of the Fifth Principal Meridian, CHICKASAW County, Iowa. Previously recorded in NONE in County Recorder's Office.

(book, page, document number, etc.)

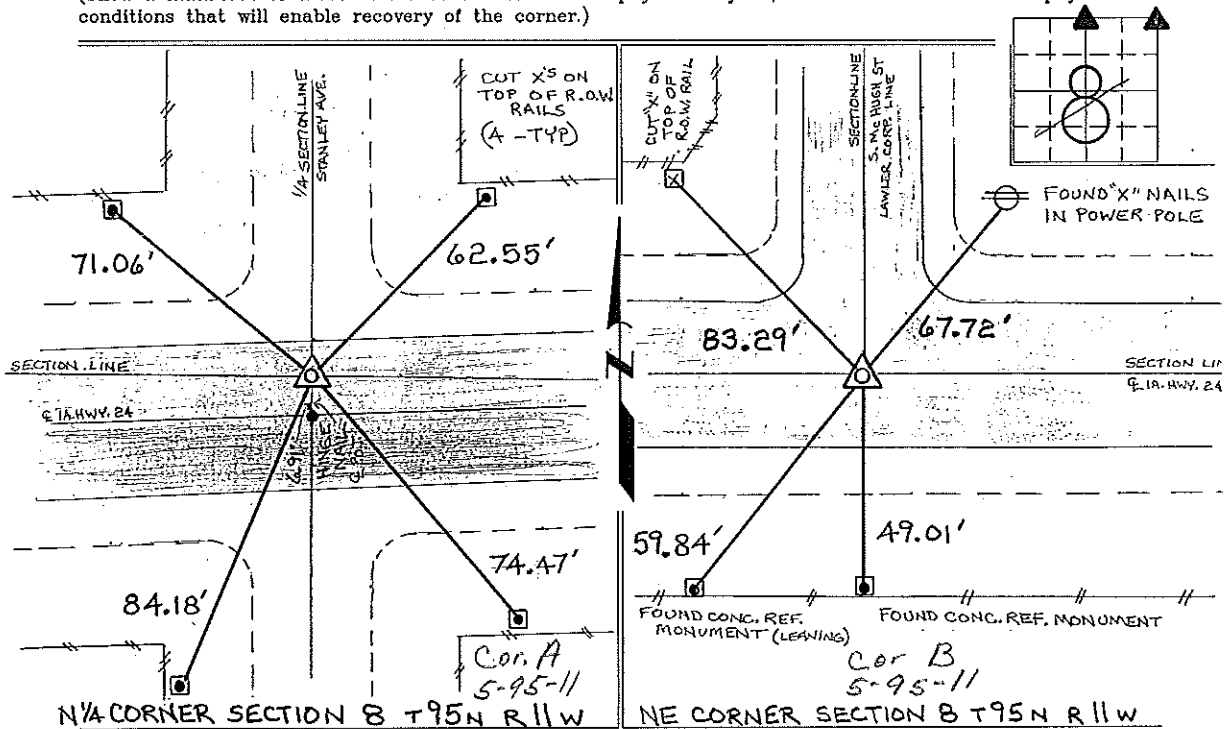
(Show reason for preparing this certificate, the evidence and detailed procedures used in establishing the corner positions and monumentation found or placed.)

Monument Description and Remarks: N 1/4 CORNER SECTION 8 T95N R11W: FOUND A 3" Ø I.D.O.T. ALUM. MONU. 6.91' NORTH OF IA HWY 24 P.O.T. STA. 359+13.1 (HINGE NAIL) AS DESCRIBED AND MATCHING TIES OBTAINED FROM IOWA D.O.T., R.O.W. & PLANS DEPARTMENTS, AMES, IA.

NE CORNER SECTION 8 T95N R11W: FOUND HINGE NAIL & OF IA HWY 24 = PI STA. 385+83.1 MATCHING TIES OBTAINED FROM IOWA D.O.T., R.O.W. & PLANS DEPARTMENTS, AMES, IA.

PLAN - VIEW

(Show a minimum of three reference ties to durable physical objects, relevant monuments and physical conditions that will enable recovery of the corner.)



I hereby certify that the survey work was completed and this certificate was prepared by me or under my direct personal supervision and that I am a duly registered land surveyor under the laws of the state of Iowa.

Signature: Lyle G. Tekippe
Lyle G. Tekippe

Date: 1-29-96 Reg. No. 7060
My Registration Renewal Date is December 31, 1998

Seal



List Corners to be Indexed			
Corners	Section	Twp.	Range
N 1/4	8	95N	11W
NE	8	95N	11W

Placed in tie Book
3/4/96