

2006-2428
11/30/06

TeKIPPE ENGINEERING, P.C., 128 South Vine Street, West Union, Iowa 52175 Phone (563) 422-6131

UNITED STATES PUBLIC LAND SURVEY CORNER CERTIFICATE

OF

Land Survey Monuments situated in Section 9, Township 95 North, Range 11 West of the Fifth Principal Meridian, Chickasaw County, Iowa.

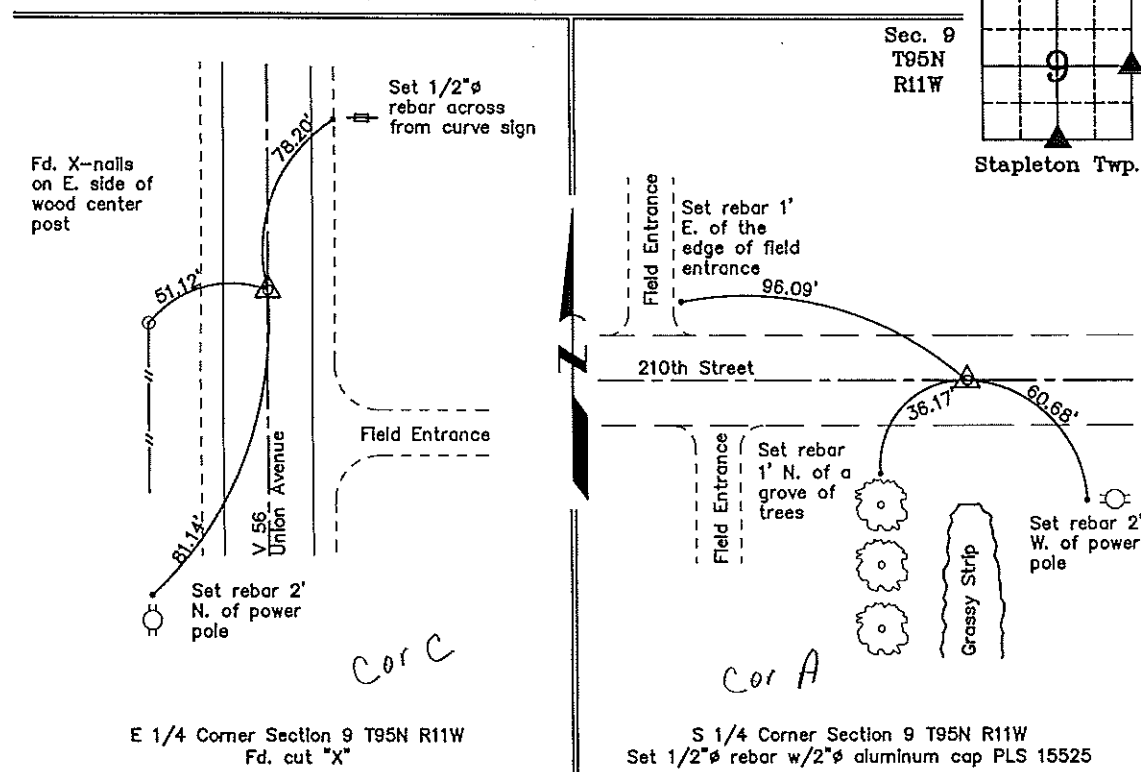
Previously recorded in none in County Recorder's Office.
(book, page, document number, etc.)

(Show reason for preparing this certificate, the evidence and detailed procedures used in establishing the corner positions and monumentation found or placed.)

Monument Description and Remarks: E 1/4 Corner Section 9 T95N R11W: Found cut "X" from County Engineer's Field Book Stapleton Township, Section 9, Corner C.
S 1/4 Corner Section 9 T95N R11W: Set 1/2"Ø rebar with 2"Ø aluminum cap PLS 15525, on Centerline of 210th Street and possession line South.

PLAN - VIEW

(Show a minimum of three reference ties to durable physical objects, relevant monuments and physical conditions that will enable recovery of the corner.)



I hereby certify that this land surveying document was prepared and the related survey work was performed by me or under my direct personal supervision and that I am a duly licensed Land Surveyor under the laws of the State of Iowa.

Paul R. Herold 11-28-06
 Paul R. Herold Date
 License number 15525
 My license renewal date is December 31, 2008.
 Sheets covered by this seal: Individual

List Corners to be Indexed			
Corners	Section	Twp.	Range
E 1/4	9	95N	11W
S 1/4	9	95N	11W

Project Number 06312.15
 FB. 46M, PGS. 30-32
 X:\Section Corners\Sec. 0919-95-11ow.dwg