

TeKIPPE ENGINEERING, P.C., 128 South Vine Street, West Union, Iowa 52175 Phone (563) 422-6181

UNITED STATES PUBLIC LAND SURVEY CORNER CERTIFICATE

OF

Land Survey Monuments situated in Section 4, Township 95 North, Range 11 West of the Fifth Principal Meridian, Chickasaw County, Iowa. Previously recorded in (1) Bk. 2000, Pg. 1559 (2) Bk. 2000, Pg. 1558 in County Recorder's Office.
(book, page, document number, etc.)

(Show reason for preparing this certificate, the evidence and detailed procedures used in establishing the corner positions and monumentation found or placed.)

Monument Description and Remarks: (1) NE Corner of SW-SW of Section 4-T95N-R11W:

Set Mag Nail with stainless steel washer LS 7060 over top of magnetic reading after comparing that position to existing ties of record. Updating certificate because monument of record was overlaid with H.M.A. surfacing.

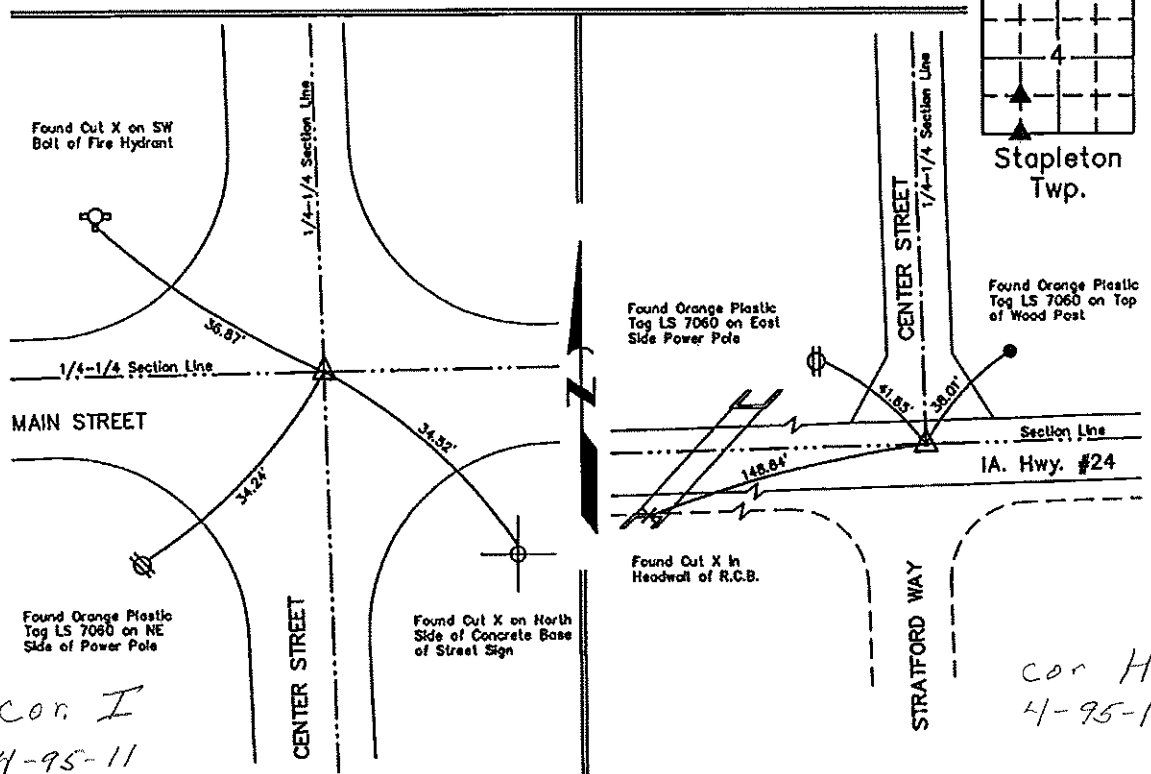
(2) SE Corner of SW-SW of Section 4-T95N-R11W:

Found survey mark nail with stainless steel washer #19211 from survey and plat recorded August 9, 2011, in Book 2011, Page 1331. Updating certificate because monument doesn't match existing certificate of record.

PLAN VIEW

Project Number 121025.LS
Field Book: 46M, Page 74

Show a minimum of three reference ties to durable physical objects, relevant monuments and physical conditions that will enable recovery of the corner.



(1) NE Corner of SW-SW of Sec. 4-T95N-R11W
Set Mag Nail w/Stainless Steel Washer LS 7060

(2) SE Corner of SW-SW of Sec. 4-T95N-R11W
Found Survey Mark Nail w/Stainless Steel Washer #19211

	<p>I hereby certify that this land surveying document was prepared and the related survey work was performed by me or under my direct personal supervision and that I am a duly licensed Land Surveyor under the laws of the State of Iowa.</p> <p><i>Lyle G. TeKippe</i> 2-22-12 Lyle G. TeKippe, P.E. & P.L.S. Date License Number 7060 My license renewal date is December 31, 2012. Sheets covered by this seal: This Sheet Only</p>	<p>List Corners to be Indexed</p> <table border="1"> <thead> <tr> <th>Corners</th> <th>Section</th> <th>Twp.</th> <th>Range</th> </tr> </thead> <tbody> <tr> <td>NE of SW-SW</td> <td>4</td> <td>95N</td> <td>11W</td> </tr> <tr> <td>SE of SW-SW</td> <td>4</td> <td>95N</td> <td>11W</td> </tr> </tbody> </table>	Corners	Section	Twp.	Range	NE of SW-SW	4	95N	11W	SE of SW-SW	4	95N	11W
	Corners	Section	Twp.	Range										
NE of SW-SW	4	95N	11W											
SE of SW-SW	4	95N	11W											
<p>X:\Section Corners\Sec. 04\4-95-11QV.dwg</p>														

UNITED STATES PUBLIC LAND SURVEY CORNER CERTIFICATE

OF

Land Survey Monuments situated in Section 4, Township 95 North, Range 11 West of the Fifth Principal Meridian, CHICKASAW County, Iowa. Previously recorded in none in County Recorder's Office.
(book, page, document number, etc.)

(Show reason for preparing this certificate, the evidence and detailed procedures used in establishing the corner positions and monumentation found or placed.)

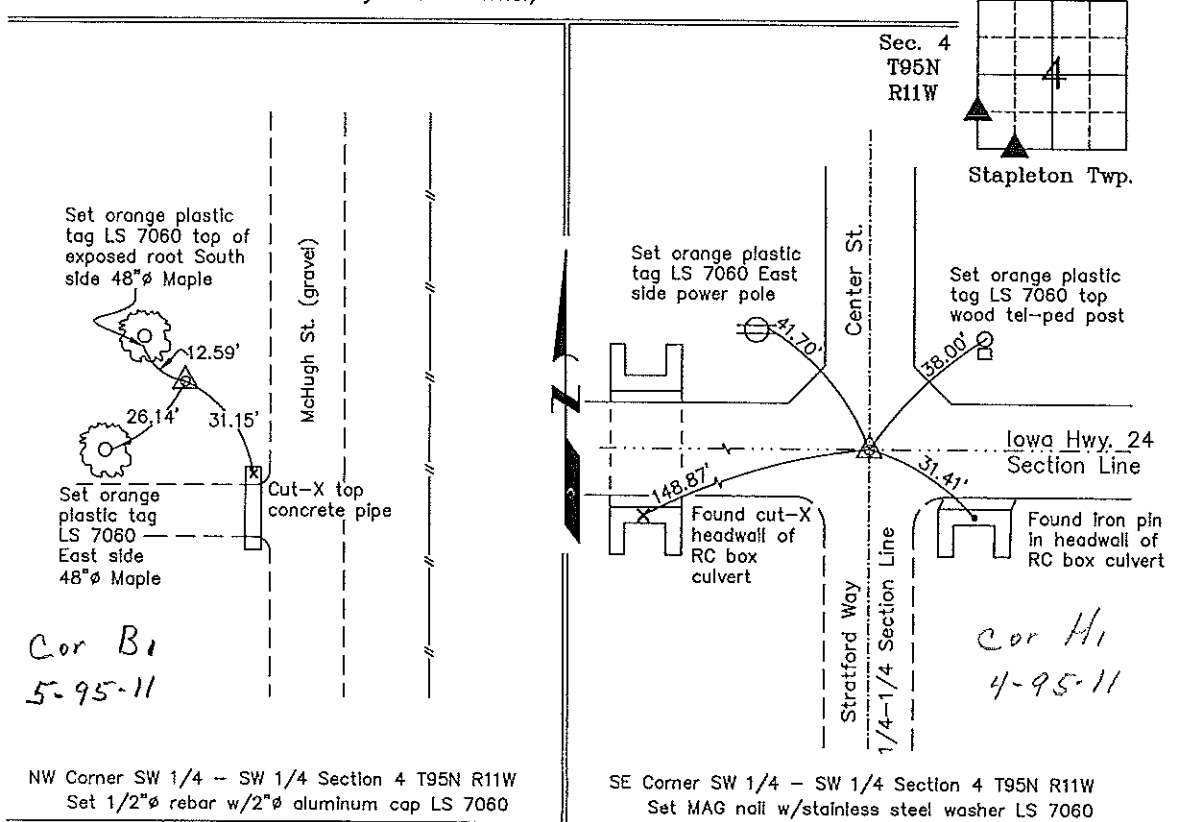
Monument Description and Remarks: **NW Corner SW 1/4 - SW 1/4 Section 4 T95N R11W:** Set 1/2"Ø rebar w/2"Ø aluminum cap LS 7060 equidistant and on line between the SW Corner and the W 1/4 Corner of Section 4.

SE Corner SW 1/4 - SW 1/4 Section 4 T95N R11W: Set MAG nail w/stainless steel washer LS 7060 at the intersection of the centerline of Center St. with the centerline of Iowa Hwy. 24 as indicated in the Road Record found in the Chickasaw County Engineer's Office.

PLAN - VIEW

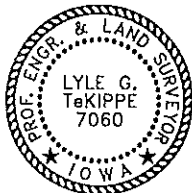
Project Number 00167.LS
 FL 46H PG. 4-17

(Show a minimum of three reference ties to durable physical objects, relevant monuments and physical conditions that will enable recovery of the corner.)



NW Corner SW 1/4 - SW 1/4 Section 4 T95N R11W
 Set 1/2"Ø rebar w/2"Ø aluminum cap LS 7060

SE Corner SW 1/4 - SW 1/4 Section 4 T95N R11W
 Set MAG nail w/stainless steel washer LS 7060



I hereby certify that this land surveying document was prepared and the related survey work was performed by me or under my direct personal supervision and that I am a duly licensed Land Surveyor under the laws of the State of Iowa.

Lyle G. TeKippe 9-6-00
 Lyle G. TeKippe Date
 License number 7060
 My license renewal date is December 31, 2000.
 Sheets covered by this seal: Individual

List Corners to be Indexed			
Corners	Section	Twp.	Range
NW-SW-SW	4	95	11
SE-SW-SW	4	95	11

Engineer's Copy