

Herold - Reicks Surveying, 10 East Main Street, New Hampton, IA 50659, Ph. 641-394-2725, Fax. 641-394-2718

UNITED STATES PUBLIC LAND SURVEY CORNER CERTIFICATE

Land Survey Monuments situated in Section 4, Township 95 North, Range 11 West of the Fifth Principal Meridian, Chickasaw County, Iowa. Previously recorded in **Bk. 167, Pg. 310** in the County Recorder's office.

This certificate is being prepared in compliance with Iowa Code Chapter 355.11 because:

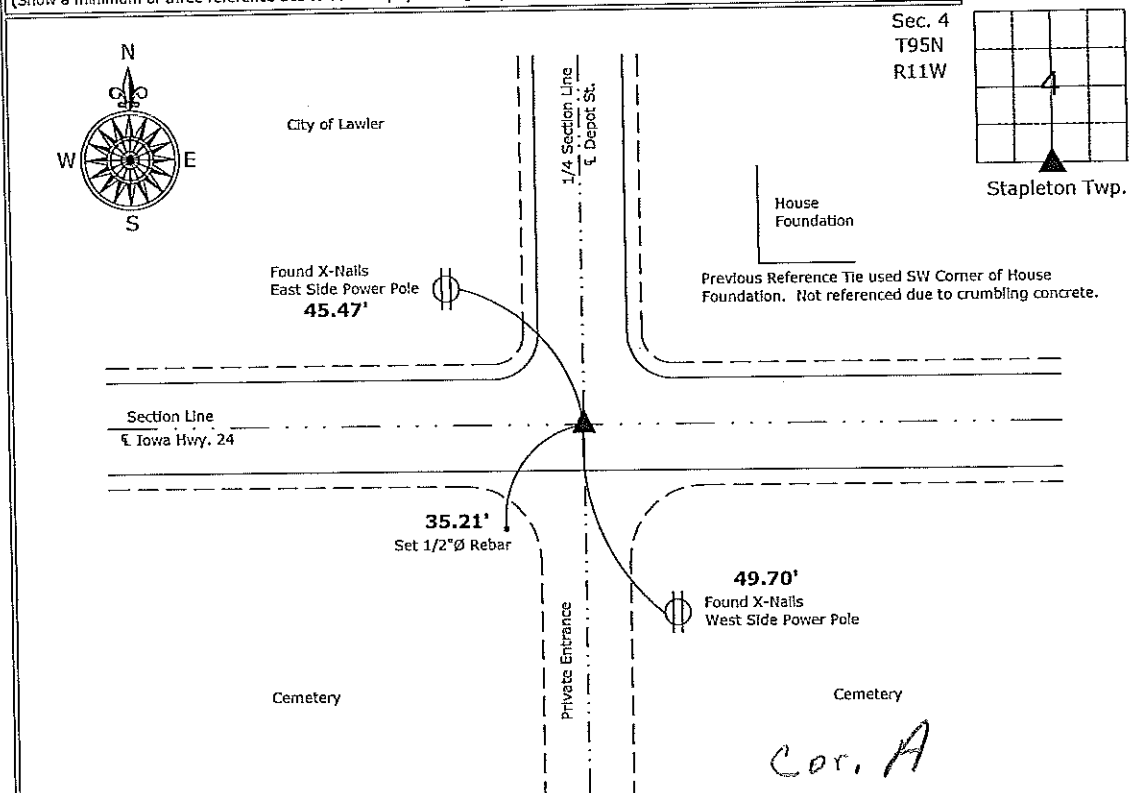
- There is no certificate on file for this corner.
- There are no longer three valid ties of record.
- There are changes to reference ties of record.
- There is change of monumentation of record.
- To clarify description of record monument (ties).

Monument Description and Remarks:

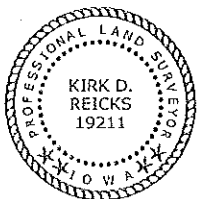
South 1/4 Corner: Set Survey Mark Nail with Stainless Steel Washer PLS 19211 with information obtained from previous section corner certificate. The previous monument (Iowa D.O.T. 3.5" Aluminum Disc) was obliterated due to Iowa Highway 24 HMA Pavement Overlay in 2009.

PLAN - VIEW

(Show a minimum of three reference ties to durable physical objects, relevant monuments and physical conditions that will enable recovery of the corner.)



South 1/4 Corner Section 4-95-11
 Set Survey Mark Nail w/Stainless Steel Washer PLS 19211



I hereby certify that this land surveying document was prepared and the related survey work was performed by me or under my direct personal supervision and that I am a duly licensed Land Surveyor under the laws of the State of Iowa.

Kirk D. Reicks 1-6-10
 Kirk D. Reicks Date:

License number 19211
 My license renewal date is December 31, 2010.
 Sheets covered by this seal: Individual sheet only

List Corners to be Indexed			
Corners	Section	Twp.	Range
S 1/4	4	95	11

Project Number: 2009-158

FB: Lawler 1, Pg. 3

UNITED STATES PUBLIC LAND SURVEY CORNER CERTIFICATE

OF

Section 4-95-11
As referred to in
Engg. Tr. Book

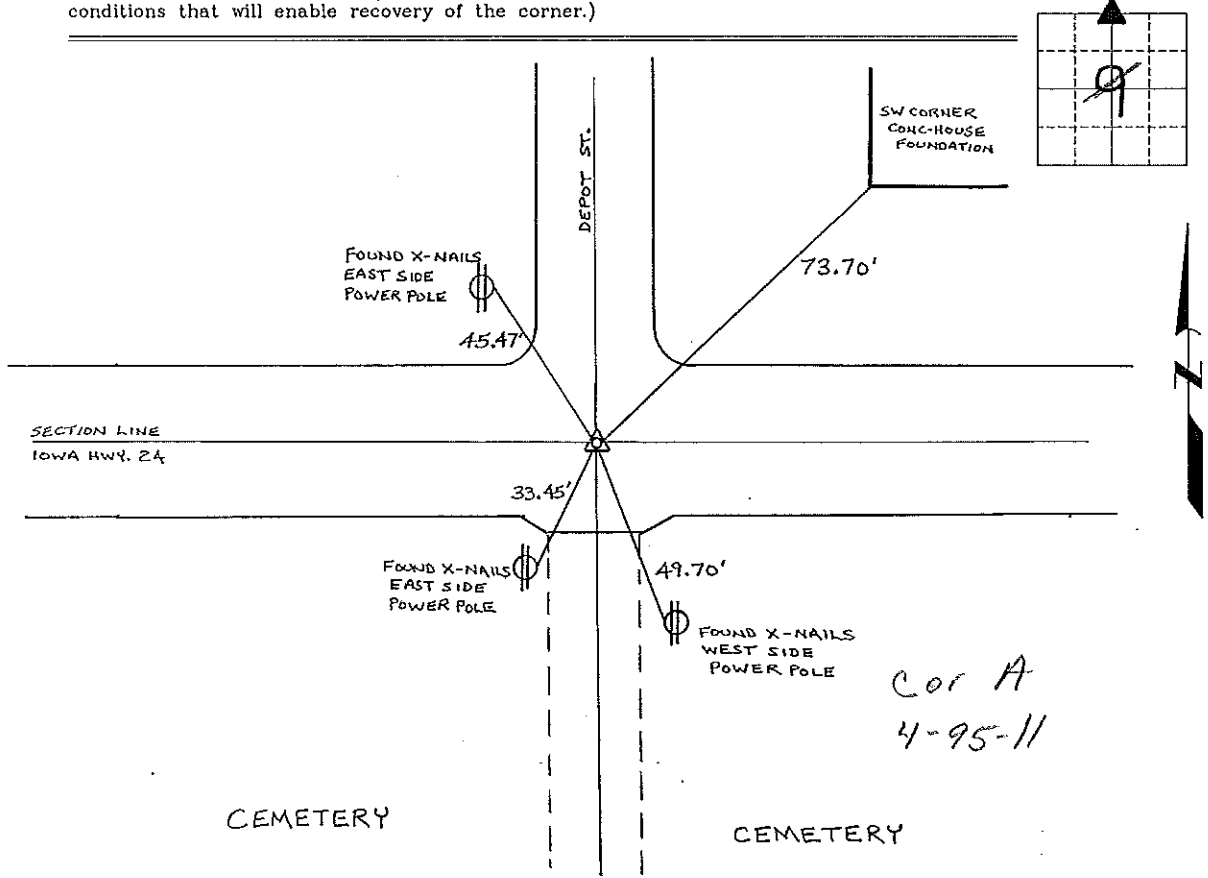
Land Survey Monuments situated in Section 9 4, Township 95 North, Range 11 West, of the Fifth Principal Meridian, CHICKASAW County, Iowa. Previously recorded in NONE in County Recorder's Office.
(book, page, document number, etc.)

(Show reason for preparing this certificate, the evidence and detailed procedures used in establishing the corner positions and monumentation found or placed.)

Monument Description and Remarks: N 1/4 CORNER SECTION 9 T 95 N R 11 W:
FOUND IOWA D.O.T. 3 1/2" Ø ALUMINUM MONUMENT, FROM TIES OBTAINED FROM THE CHICKASAW COUNTY ENGINEERS OFFICE.

PLAN - VIEW

(Show a minimum of three reference ties to durable physical objects, relevant monuments and physical conditions that will enable recovery of the corner.)



I hereby certify that this land surveying document was prepared and the related survey work was performed by me or under my direct personal supervision and that I am a duly licensed Land Surveyor under the laws of the State of Iowa.
Lyle G. TeKippe 4-28-98
Lyle G. TeKippe Date
License number 7060
My license renewal date is December 31, 1998.
Sheets covered by this seal: Individual

List Corners to be Indexed			
Corners	Section	Twp.	Range
N 1/4	9	95 N	11 W

Corner A 4-95-11
Placed in tie book 4/30/98