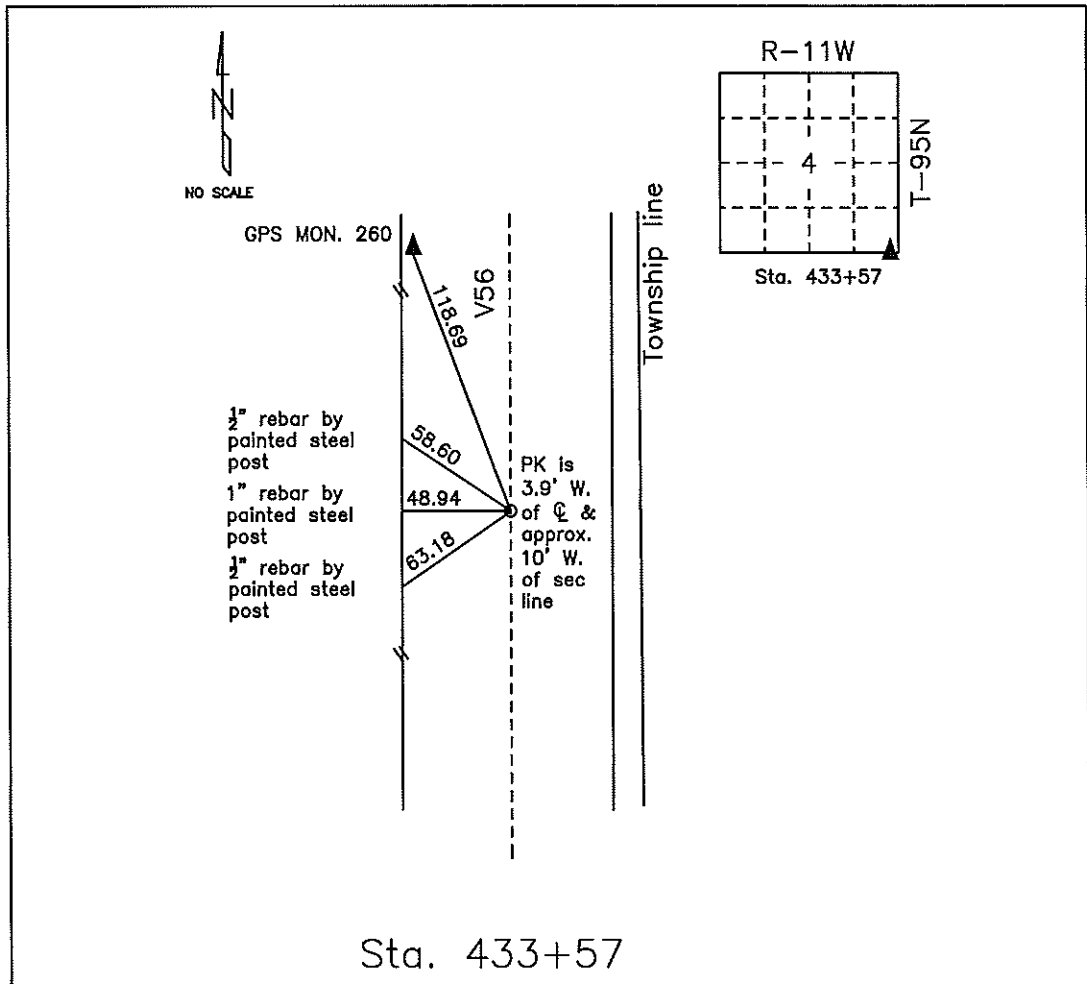


COUNTY ENGINEER'S PI PRESERVATION RECORD

LAND SURVEY MONUMENT LOCATED IN SECTION 4, TOWNSHIP 95 N
NORTH, RANGE 11 W, OF THE 5TH P.M. Chickasaw COUNTY, IOWA
PREVIOUSLY RECORDED NONE



MONUMENT DESCRIPTION AND NARRATIVE Found PK nail in HMA mat

From Chickasaw County project plans SN-188(9) found PI is 3.9' west of center line. Information was also found in the county engineer tie book May 22,1996.

All ties were aquired by GPS

I AM NOT A REGISTERED LAND SURVEYOR UNDER THE LAWS OF THE STATE OF IOWA

JIM FOSTER CHICKASAW CO. DATE: 07/12/10

UNITED STATES PUBLIC LAND SURVEY CORNER CERTIFICATE

OF

Land Survey Monuments situated in Section 9 4, Township 95 North, Range 11 West, of the Fifth Principal Meridian, CHICKASAW County, Iowa. Previously recorded in NONE in County Recorder's Office. (book, page, document number, etc.)

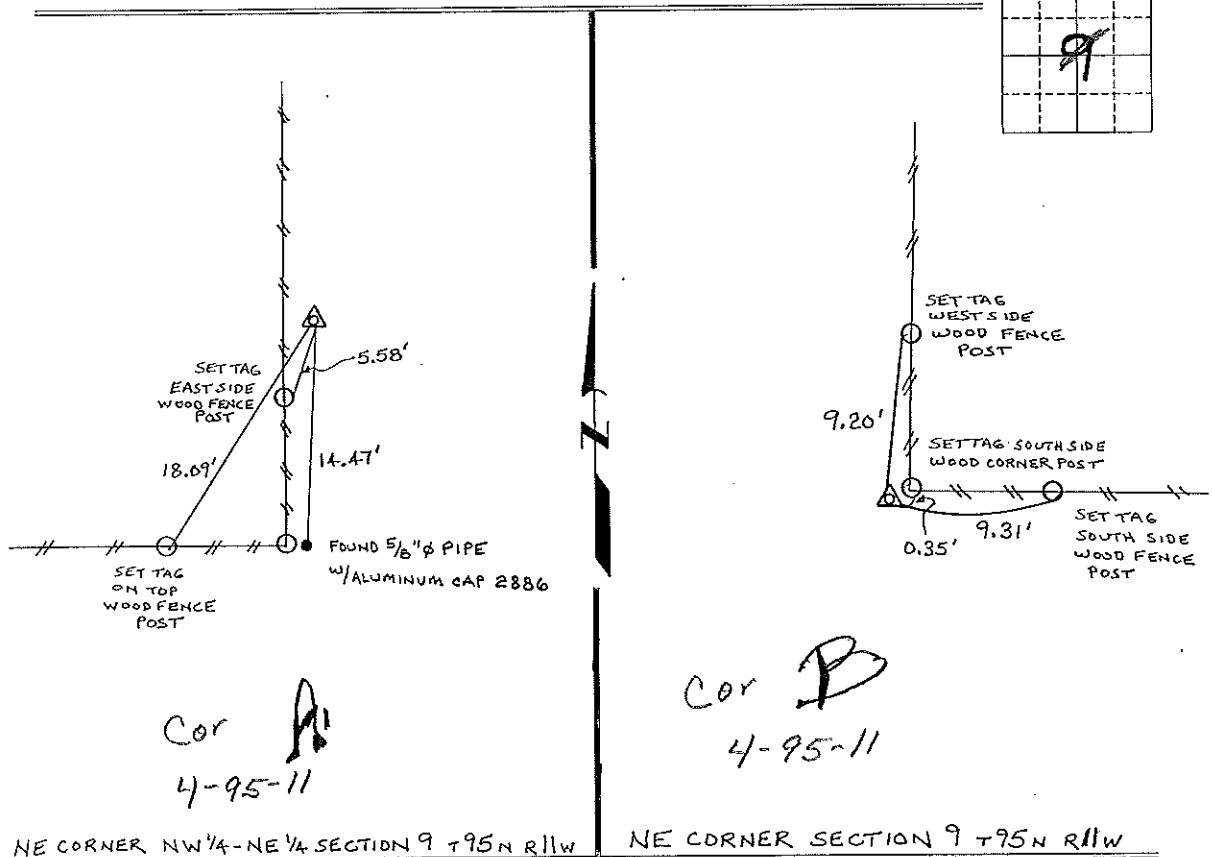
(Show reason for preparing this certificate, the evidence and detailed procedures used in establishing the corner positions and monumentation found or placed.)

Monument Description and Remarks: NE CORNER NW 1/4-NE 1/4 SECTION 9 T95N R11W: SET 1/2" Ø REBAR w/ ORANGE PLASTIC CAP - LS 7060, EQUIDISTANT AND ON LINE BETWEEN THE N 1/4 CORNER AND THE NE CORNER.

NE CORNER SECTION 9 T95N R11W: FOUND 1/2" Ø REBAR w/ ORANGE PLASTIC CAP - LS 7060, FOUND FROM INFORMATION ON A SURVEY AND PLAT MADE BY LYLE G. TEKIPPE, RECORDED JUNE 7, 1990, DEEDS BOOK 145, PAGES 95-98.

PLAN - VIEW

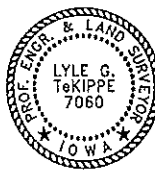
(Show a minimum of three reference ties to durable physical objects, relevant monuments and physical conditions that will enable recovery of the corner.)



Section 4-95-11
As referred to in
Engr. The Book

NE CORNER NW 1/4-NE 1/4 SECTION 9 T95N R11W

NE CORNER SECTION 9 T95N R11W



I hereby certify that this land surveying document was prepared and the related survey work was performed by me or under my direct personal supervision and that I am a duly licensed Land Surveyor under the laws of the State of Iowa.
Lyle G. TeKippe 4-28-98
Lyle G. TeKippe Date
License number 7060
My license renewal date is December 31, 1998.
Sheets covered by this seal: Individual

List Corners to be Indexed

Corners	Section	Twp.	Range
NE-NW-NE Corner A, 4-95-11	9	95N	11W
NE Corner B 4-95-11	9	95N	11W

Placed in the