

Chickasaw Co. Recorder
Cindy Messersmith
Fee Book 2015-0418
04/15/2015 @0922AM
SCC SEC COR CERT
Book: Page: # Pages: 1
Total Fees: \$7.00

Prepared by: Erdman Engineering, P.C., 708 Commerce Drive ,P.O. Box 246, Decorah, Iowa, (563)382-4194

UNITED STATES PUBLIC LAND SURVEY CORNER CERTIFICATE
OF

Land Survey Monuments situated in Section 12, Township 96 North, Range 11 West, of
the Fifth Principal Meridian, Chickasaw County, Iowa, Previously recorded in Book 157 page 141 in the
County Recorder's Office.

Monument Description and Remarks:

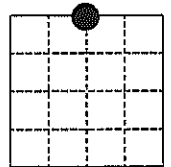
This certificate is prepared in accordance with Section 355.11 of the Code of Iowa. No previous certificates have been filed for these corner locations.

N 1/4 Corner: Based on the previously recorded certificate we searched for the tie markers previously set. We did not find any as they appear to have been removed. We found a steel bar with yellow plastic cap #12532 at the approximate centerline of the county road that matched the description of the monument set previously as the S 1/4 of Section 1. We used the monument as the N 1/4 Corner of Section 12, Township 96 North, Range 11 West.

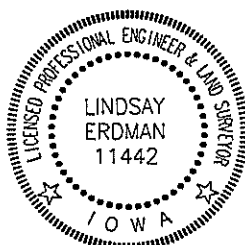
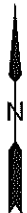
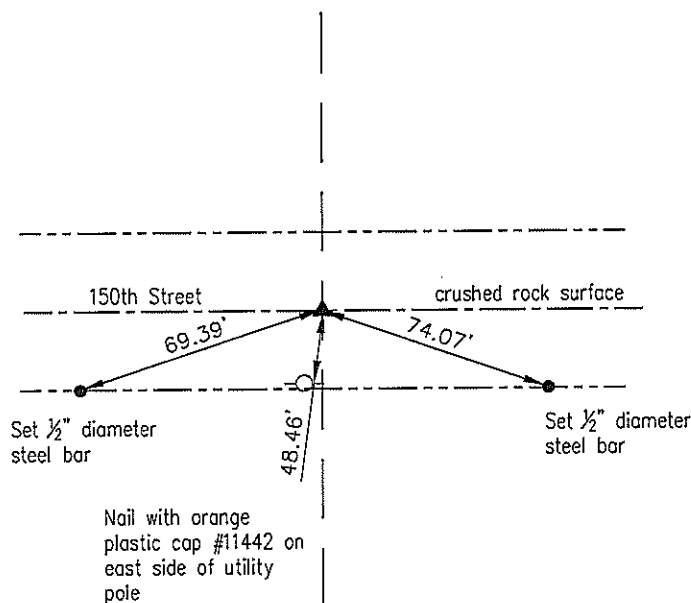
PLAN-VIEW
(NOT TO SCALE)

N 1/4 CORNER

Found steel bar with
yellow plastic cap
#12532



SECTION 12



I hereby certify that this land surveying document was prepared and the related survey work was performed by me or under my direct personal supervision and that I am a duly licensed Land Surveyor under the laws of the State of Iowa.

Lindsay Erdman 4/14/15
Date

Lindsay Erdman, P.E. & P.L.S.
Licensed Professional Land Surveyor
Iowa License Number 11442
My License renewal date is December 31, 2016
Pages or sheets covered by this seal: THIS SHEET ONLY

List Corner(s) to be Indexed

Corner(s)	Section	Township	Range
N 1/4	12	96	11

ERDMAN
ENGINEERING, P.C.

CIVIL ENGINEERING & LAND SURVEYING

UNITED STATES PUBLIC LAND SURVEY CORNER CERTIFICATE

OF

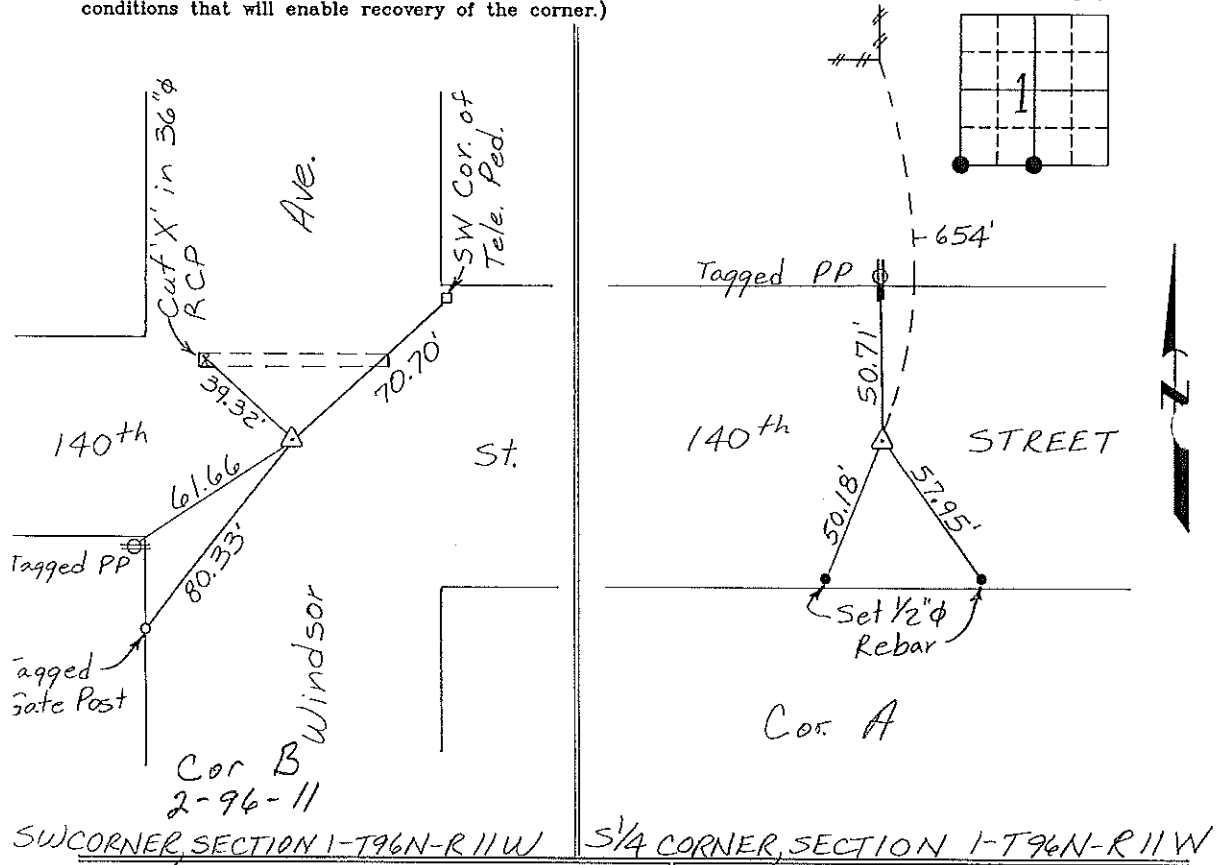
Land Survey Monuments situated in Section 1, Township 96 North, Range 11 West, of the Fifth Principal Meridian, CHICKASAW County, Iowa
Previously recorded in NONE in County Recorder's Office.
(book, page, document number, etc.)

(Show reason for preparing this certificate, the evidence and detailed procedures used in establishing the corner positions and monumentation found or placed.)

Monument Description and Remarks: SW CORNER, SECTION 1-T96N-R11W:
Found 5/8" Rebar.
- S 1/4 CORNER, SECTION 1-T96N-R11W: Set 1/2" Rebar with cap from
County Engineer Ties & in line with 1/4 Section Line North.

PLAN - VIEW

(Show a minimum of three reference ties to durable physical objects, relevant monuments and physical conditions that will enable recovery of the corner.)



SW CORNER, SECTION 1-T96N-R11W

S 1/4 CORNER, SECTION 1-T96N-R11W

I hereby certify that the survey work was completed and this certificate was prepared by me or under my direct personal supervision and that I am a duly registered land surveyor under the laws of the state of Iowa.

Signature: Gary L. Casady

Date: 1-19-95 Reg. No. 12532

My Registration Renewal Date is December 31, 1994

Seal



List Corners to be Indexed

Corners	Section	Twp.	Range
SW	1	96N	11W
Cor B	2-96-11		
S 1/4	1	96N	11W
Cor A	1-96-11		

Placed in
Tie Book 3/13

157-141

"County Engineer's Copy"