



Prepared by & Return to: Herold - Reicks Surveying, 10 East Main Street, New Hampton, IA 50659, Ph. 641-364-2725

United States Public Land Survey Corner Certificate

Land Survey Monument situated in
Section **21**, Township **96** North, Range **11** West of the Fifth Principal Meridian, **Chickasaw** County, Iowa.
On file in **Document #2015-0091** in the County Recorder's office.

This certificate is being prepared in compliance
with Iowa Code Chapter 355.11 because:

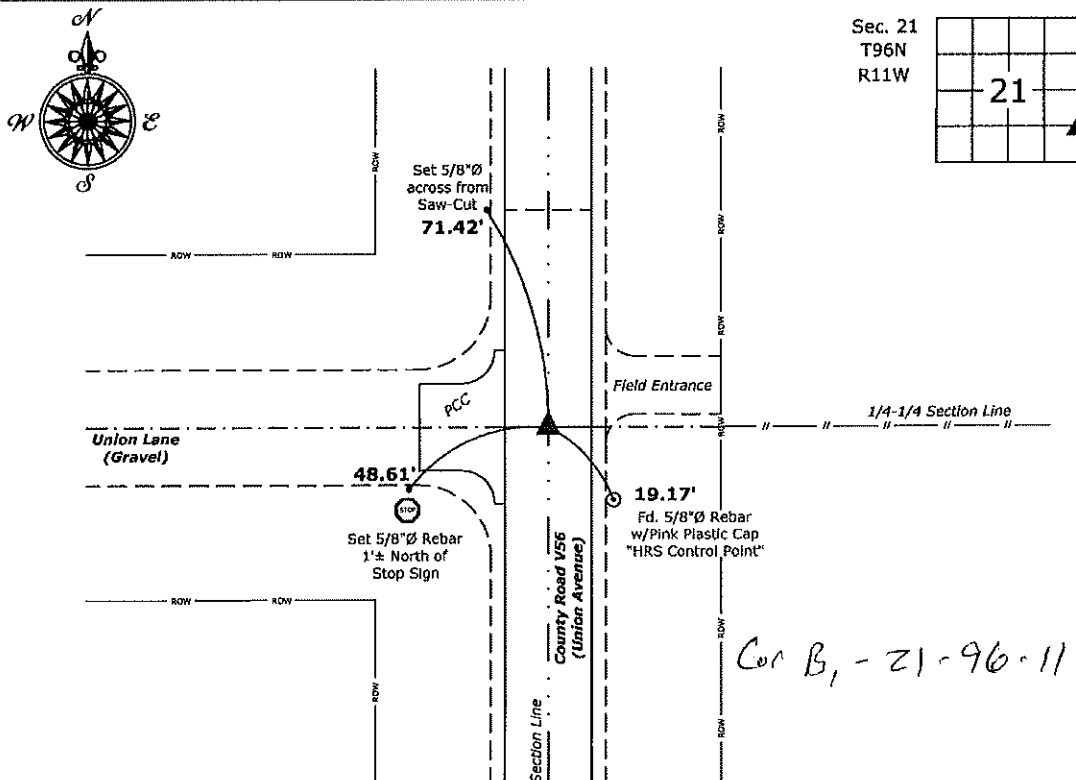
- ☐ There is no certificate on file for this corner.
☐ There are no longer three valid ties of record.
☐ There are changes to reference ties of record.
☒ There is change of monumentation of record.
☐ To clarify description of record monument (ties).

Monument Description and Remarks:

Northeast Corner SE 1/4-SE 1/4: Set 1"Ø Bronze Survey Marker PLS 19211 at previous location (Found MAG Nail with Stainless Steel Washer PLS 11442) with coordinates of the Corner obtained prior to highway reconstruction, Project No. FM-C019(89)--55-19.

Plan View

(Show a minimum of three reference ties to durable physical objects, relevant monuments and physical conditions that will enable recovery of the corner.)



Northeast Corner SE 1/4-SE 1/4 of Section 21-96-11
Set 1"Ø Bronze Survey Marker PLS 19211



I hereby certify that this land surveying document
was prepared and the related survey work was
performed by me or under my direct personal
supervision and that I am a duly licensed Land
Surveyor under the laws of the State of Iowa.

Kirk D. Reicks 6-17-20
Kirk D. Reicks Date:

License number 19211

My license renewal date is December 31, 2020.
Sheets covered by this seal: Individual sheet only

List Corner to be Indexed

Corner	Section	Twp.	Range
NE-SE-SE	21	96	11

Project Number: 2019-810

FB: 2019 Construction, Pgs. 14-36

Prepared by: Erdman Engineering, P.C., 708 Commerce Drive, P.O. Box 246, Decorah, Iowa, (563)382-4194

UNITED STATES PUBLIC LAND SURVEY CORNER CERTIFICATE
OF

Land Survey Monuments situated in Section 21, Township 96 North, Range 11 West, of the Fifth Principal Meridian, Chickasaw County, Iowa, Previously recorded in does not apply in the County Recorder's Office.

Monument Description and Remarks:

This certificate is prepared in accordance with Section 355.11 of the Code of Iowa. No previous certificates have been filed for these corner locations.

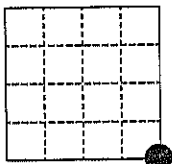
SE Corner: Based on Chickasaw County Engineer's Reference Ties we found two 5/8" diameter steel bars used previously as tie markers. From these ties we found a P.K. nail at the approximate centerline of the county road that matches the description of the monument set previously at the SE Corner of Section 21, Township 96 North, Range 11 West.

ESE 1/8 Corner: We found no record of the ESE 1/8 Corner being set. We found no evidence of a monument in the field other than the county roads and a fence line running east. We found the E 1/4 Corner and the SE Corner. We set a Mag-nail with 1 1/2" diameter stainless steel washer #11442 on line and midway between the SE Corner and the E 1/4 Corner as the ESE 1/8 Corner of Section 21, Township 96 North, Range 11 West.

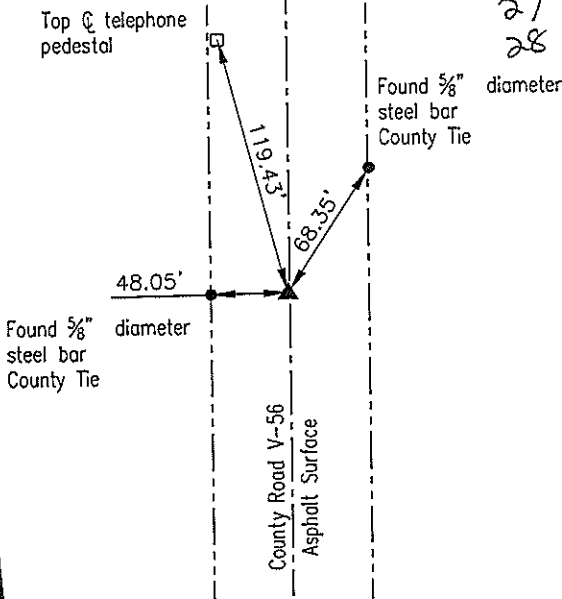
PLAN-VIEW
(NOT TO SCALE)

SE CORNER

Found P.K. nail

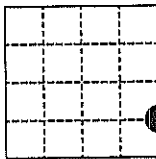


SECTION 21
22 SW
27 NW
28 NE



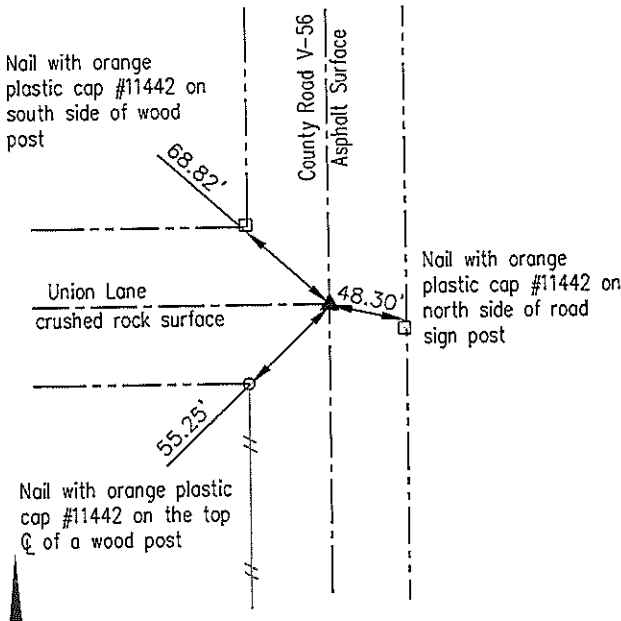
ESE 1/8 CORNER

Set Mag-nail with 1 1/2" diameter stainless steel washer #11442



SECTION 21

22 WSW 1/8



I hereby certify that this land surveying document was prepared and the related survey work was performed by me or under my direct personal supervision and that I am a duly licensed Land Surveyor under the laws of the State of Iowa.

Lindsay Erdman 1/21/15
Date

Lindsay Erdman, P.E. & P.L.S.
Licensed Professional Land Surveyor
Iowa License Number 11442
My License renewal date is December 31, 2016
Pages or sheets covered by this seal: THIS SHEET ONLY

List Corner(s) to be Indexed

Corner(s)	Section	Township	Range
SE	21	96	11
ESE 1/8	21	96	11

ERDMAN
ENGINEERING, P.C.

CIVIL ENGINEERING & LAND SURVEYING