

Instrument #: 2025-2072  
 12/10/2025 02:12:01 PM Total Pages: 1  
 SCC SECTION CORNER CERTIFICATES  
 Recording Fee: \$ 7.00  
 Shirley Troyna, Recorder, Chickasaw County Iowa



Prepared by & Return to: Kirk D. Reicks, HRS, LLC, 10 East Main Street, New Hampton, IA 50659, Phone 641-394-2725

### United States Public Land Survey Corner Certificate

Land Survey Monument situated in  
 Section 23, Township 96 North, Range 11 West of the Fifth Principal Meridian, Chickasaw County, Iowa.  
 Not on file in the County Recorder's Office.

This certificate is being prepared in compliance with Iowa Code Chapter 355.11 because:
 

- There is no certificate on file for this corner.
- There are no longer three valid ties of record.
- There are changes to reference ties of record.
- There is change of monumentation of record.
- To clarify description of record monument (ties).

**Monument Description and Remarks:**

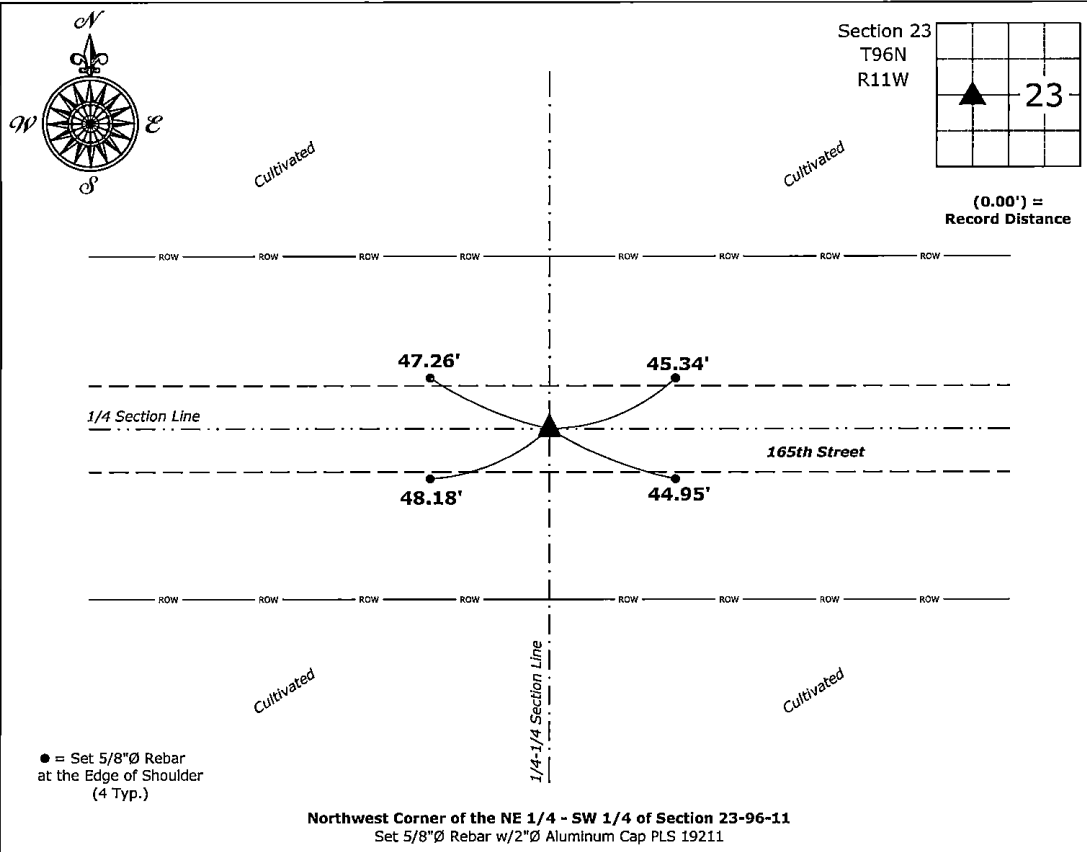
**Northwest Corner of the NE 1/4 - SW 1/4:**

Set 5/8"Ø Rebar w/Aluminum Cap PLS 19211 equidistant and on line between the Center and West 1/4 Corners of said Section.

An extensive search of all of the records within the County offices was performed as part of the section corner recovery. There were no records located of the perpetuation of a monument at this corner.

### Plan View - Not to Scale

(Show a minimum of three reference ties to durable physical objects, relevant monuments and physical conditions that will enable recovery of the corner.)



**Northwest Corner of the NE 1/4 - SW 1/4 of Section 23-96-11**  
 Set 5/8"Ø Rebar w/2"Ø Aluminum Cap PLS 19211



I hereby certify that this land surveying document was prepared and the related survey work was performed by me or under my direct personal supervision and that I am a duly licensed Land Surveyor under the laws of the State of Iowa.

*Kirk D. Reicks* 12-10-2025  
 Kirk D. Reicks Date:

License Number 19211  
 My license renewal date is December 31, 2026.  
 Sheets covered by this seal: Individual sheet only

List Corner to be Indexed			
Corner	Section	Township	Range
NW-NE-SW	23	96	11

Project Number: 2025-114

FB: Chickasaw 14, Page(s) 27-28

File: S:\Projects - NHO\County Control Systems - NHO\CHICKASAW\CHICK-24\CHICK-24 - 2025.dwg, 12/10/2025 1:29:53 PM