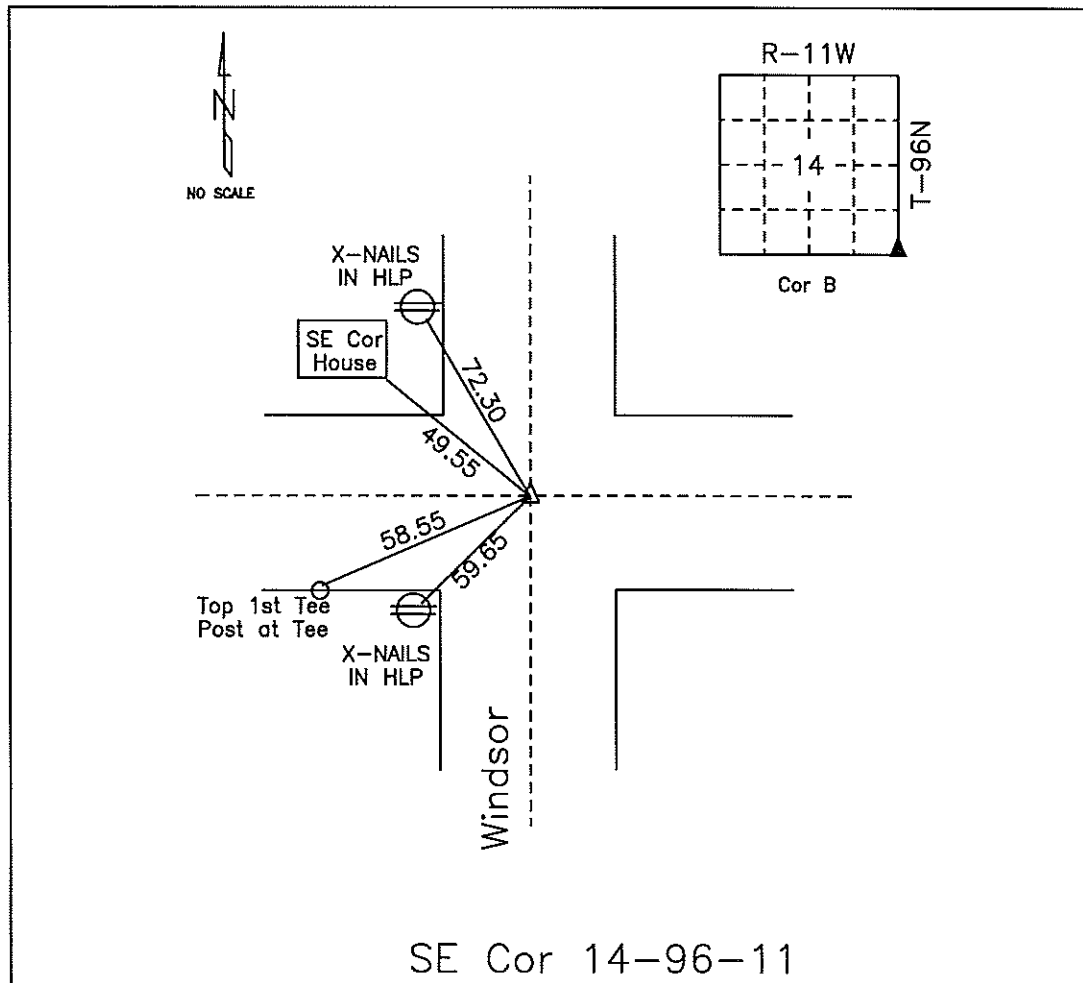


COUNTY ENGINEER'S SECTION CORNER PRESERVATION RECORD

LAND SURVEY MONUMENT LOCATED IN SECTION 14, TOWNSHIP 96 N
NORTH, RANGE 11 W, OF THE 5TH P.M. Chickasaw COUNTY, IOWA
PREVIOUSLY RECORDED COUNTY ENGINEER'S OFFICE.



MONUMENT DESCRIPTION AND NARRATIVE Set PK-Nail 06/11/09.

All ties are slope chained

I AM NOT A REGISTERED LAND SURVEYOR UNDER THE LAWS OF THE STATE OF IOWA

JIM FOSTER CHICKASAW CO. DATE: 06/11/09

DOCUMENT No. **00837** FILED FOR RECORD THE 17th DAY OF October, 1996 AT 8:52 O'CLOCK A.M. BOOK 162 DEEDS PAGE 200

RECORDING FEE \$ 6.00 By LEITHA H. ROSS Recorder
 TRANSFER FEE \$ Deputy

Prepared by: Erdman Engineering P.C. 708 Commerce Drive, P.O. Box 246, Decorah Iowa, 52101
 Phone (319)382-4194, Fax (319)382-3623

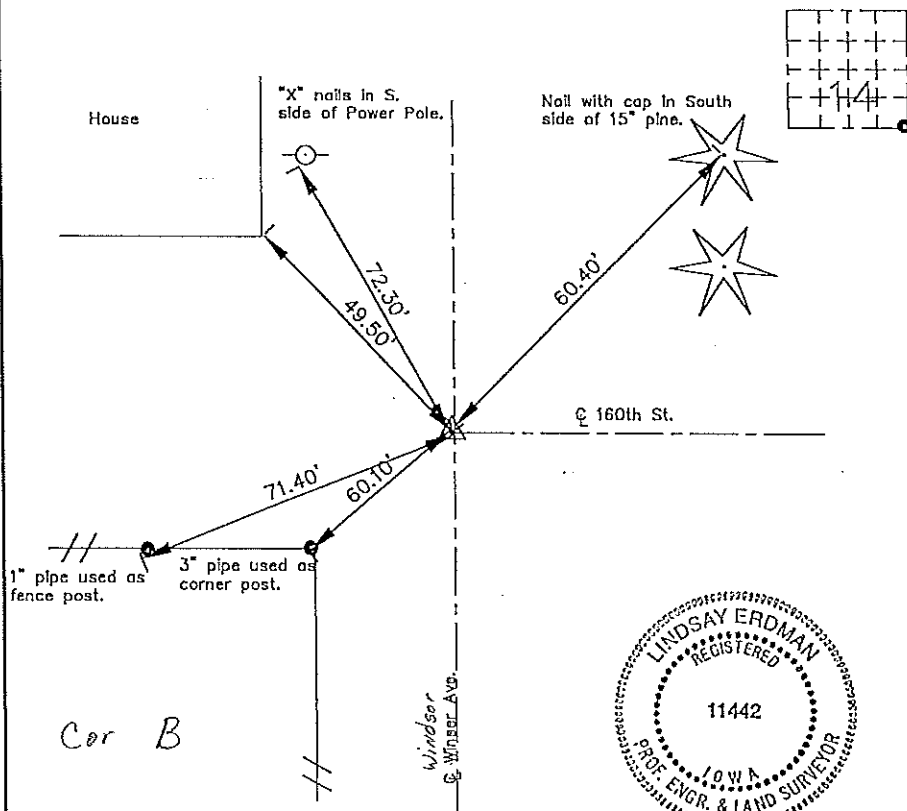
United States Public Land Survey Corner Certificate of

Land Survey Monuments situated in Section 14 Township 96 Range 11 of the Fifth Principle Meridian, Chickasaw County, Iowa. Previously recorded in Book 162 p. 57 in County Recorders Office.

(Show reason for preparing this certificate, the evidence and detailed procedures used in establishing the corner positions and monumentation found or placed.)

Monument Description and Remarks: This certificate is prepared in accordance with Section 355.11 of the 1995 Code of Iowa. No previous certificate has been filed for this corner location. Based on County Engineer's Reference Ties we found a set of "X" nails, a house corner, and two posts all used as tie markers. From these ties we found an asphalt nail at the centerline centerline of 160th St. and Winsor Ave. at the SE corner of Sec. 14-96-11.

Plan-View
(Show a minimum of three reference ties to durable physical objects, relevant monuments and physical conditions that will enable recovery of the corner.)



I hereby certify that the survey work was completed and this certificate was prepared by me or under by direct supervision and that I am a duly registered land surveyor under the laws of the State of Iowa.

Signature Lindsay Erdman
 Lindsay Erdman, P.E. and L.S.

Date: 10/14/96 Reg. No. 11442

My license will be renewed January 1, 1997

Corners	Section	Twp.	Range
SE	14	96	11