

Instrument #: 2020-0266
02/18/2020 01:17:58 PM Total Pages: 1
SCC SECTION CORNER CERTIFICATES
Recording Fee: \$ 7.00
Shirley Troyna, Recorder, Chickasaw County Iowa



Prepared by & Return to: Herald - Reicks Surveying, 10 East Main Street, New Hampton, IA 50658, Ph. 641-394-2725

United States Public Land Survey Corner Certificate

Land Survey Monument situated in
Section 22, Township 96 North, Range 11 West of the Fifth Principal Meridian, Chickasaw County, Iowa.
Not on file in the County Recorder's office.

This certificate is being prepared in compliance
with Iowa Code Chapter 355.11 because:

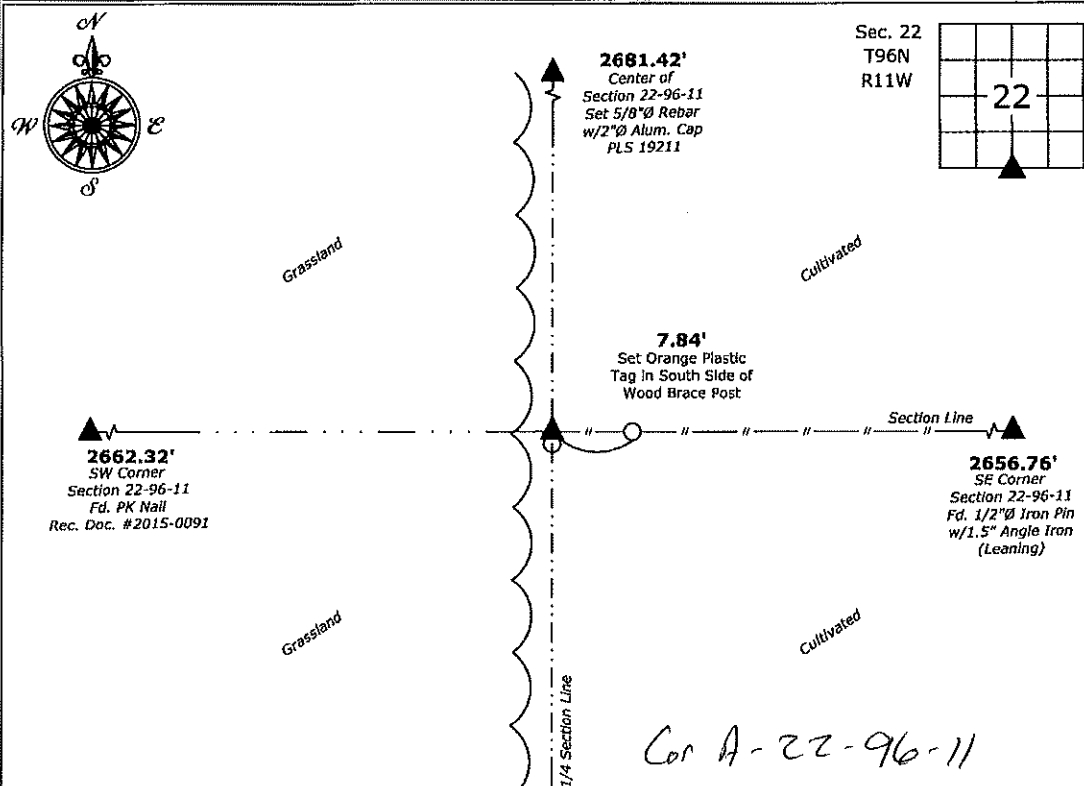
- ☒ There is no certificate on file for this corner.
☐ There are no longer three valid ties of record.
☐ There are changes to reference ties of record.
☐ There is change of monumentation of record.
☐ To clarify description of record monument (ties).

Monument Description and Remarks:

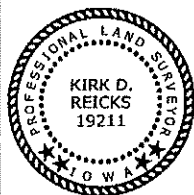
South 1/4 Corner: Set 5/8"Ø Rebar with Aluminum Cap PLS 19211 at an existing wood corner post after comparing the position to adjacent corners in said Section.

Plan View

(Show a minimum of three reference ties to durable physical objects, relevant monuments and physical conditions that will enable recovery of the corner.)



South 1/4 Corner of Section 22-96-11
Set 5/8"Ø Rebar with Aluminum Cap PLS 19211



I hereby certify that this land surveying document was prepared and the related survey work was performed by me or under my direct personal supervision and that I am a duly licensed Land Surveyor under the laws of the State of Iowa.

Kirk D. Reicks 2-14-2020

Kirk D. Reicks

Date:

License number 19211

My license renewal date is December 31, 2020.

Sheets covered by this seal: Individual sheet only

List Corner to be Indexed

Corner	Section	Twp.	Range
S 1/4	22	96	11

Project Number: 2020-009

F8: Chickasaw 10, Pgs. 10-12

File: S:\Projects - NHO\County Control Systems - NHO\CHICKASAW\CHICK-24\CHICK-24.dwg, 2/13/2020 3:57:59 PM