



Prepared by & Return to: Harold - Reicks Surveying, 10 East Main Street, New Hampton, IA 50659, Ph. 641-394-2725

### United States Public Land Survey Corner Certificate

Land Survey Monument situated in  
Section **28**, Township **96** North, Range **11** West of the Fifth Principal Meridian, **Chickasaw** County, Iowa.  
Not on file in the County Recorder's office.

This certificate is being prepared in compliance  
with Iowa Code Chapter 355.11 because:

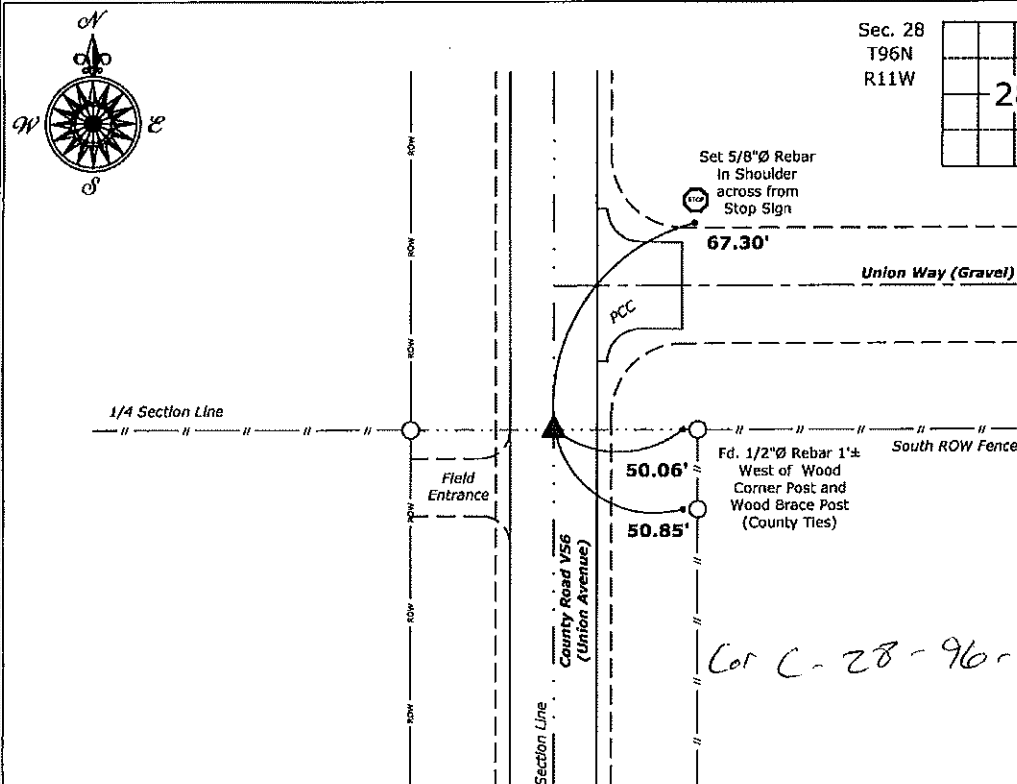
- ☒ There is no certificate on file for this corner.  
☐ There are no longer three valid ties of record.  
☐ There are changes to reference ties of record.  
☒ There is change of monumentation of record.  
☐ To clarify description of record monument (ties).

#### Monument Description and Remarks:

**East 1/4 Corner:** Set 1"Ø Bronze Survey Marker PLS 19211 at previous location (Found PK Nail) with  
coordinates of the Corner obtained prior to highway reconstruction, Project No. FM-C019(89)--55-19.

### Plan View

(Show a minimum of three reference ties to durable physical objects, relevant monuments and physical conditions that will enable recovery of the corner.)



**East 1/4 Corner of Section 28-96-11**  
Set 1"Ø Bronze Survey Marker PLS 19211



I hereby certify that this land surveying document  
was prepared and the related survey work was  
performed by me or under my direct personal  
supervision and that I am a duly licensed Land  
Surveyor under the laws of the State of Iowa.

*Kirk D. Reicks* 6-17-20  
Kirk D. Reicks Date:

License number 19211

My license renewal date is December 31, 2020.

Sheets covered by this seal: Individual sheet only

#### List Corner to be Indexed

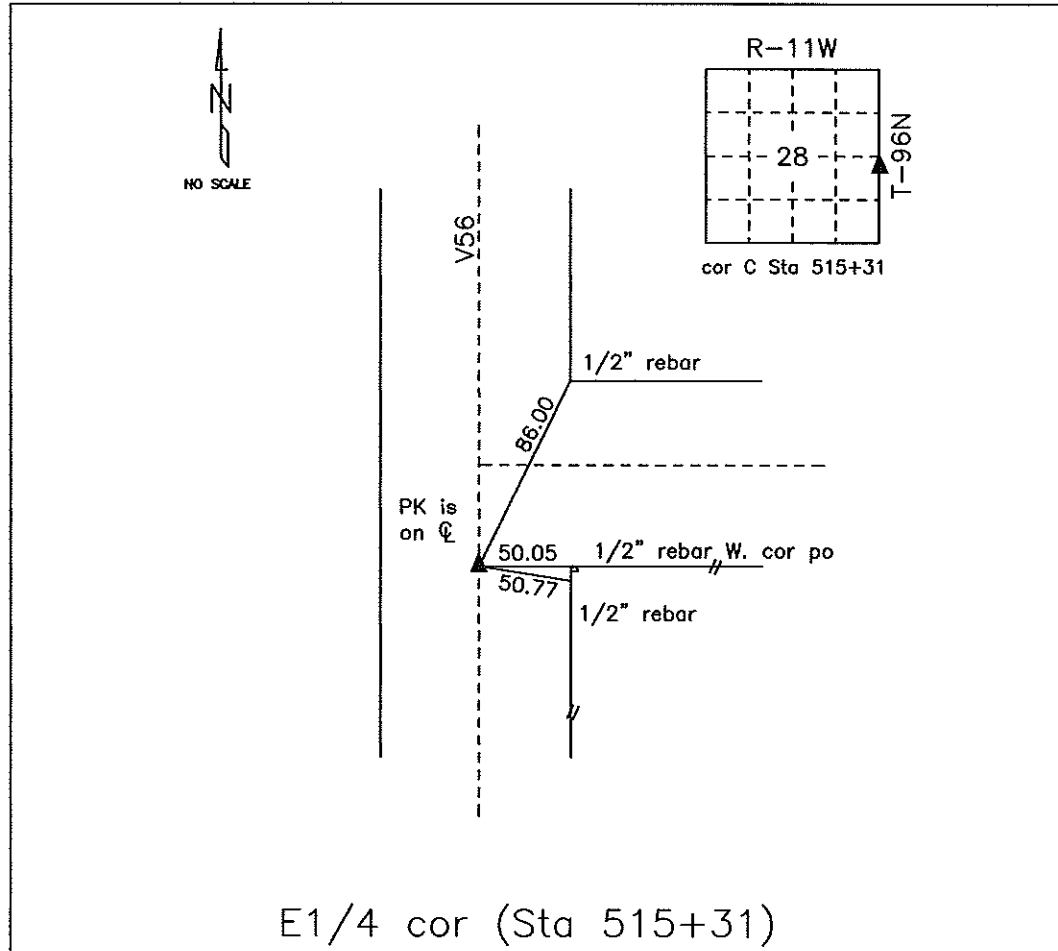
Corner	Section	Twp.	Range
E 1/4	28	96	11

Project Number: 2019-810

FB: 2019 Construction, Pgs. 14-36

# COUNTY ENGINEER'S SECTION CORNER PRESERVATION RECORD

LAND SURVEY MONUMENT LOCATED IN SECTION 28, TOWNSHIP 96 N  
NORTH, RANGE 11 W, OF THE 5TH P.M. Chickasaw COUNTY, IOWA  
PREVIOUSLY RECORDED NONE



## MONUMENT DESCRIPTION AND NARRATIVE Found PK nail in HMA mat

From Chickasaw County Project plans SN-188(9) found PI is on center line. Information was also found in  
the county engineer tie book.

All ties are GPS surveyed.

I AM NOT A REGISTERED LAND SURVEYOR UNDER THE LAWS OF THE STATE OF IOWA

JIM FOSTER CHICKASAW CO. DATE: 07/20/10