

## UNITED STATES PUBLIC LAND SURVEY CORNER CERTIFICATE

OF

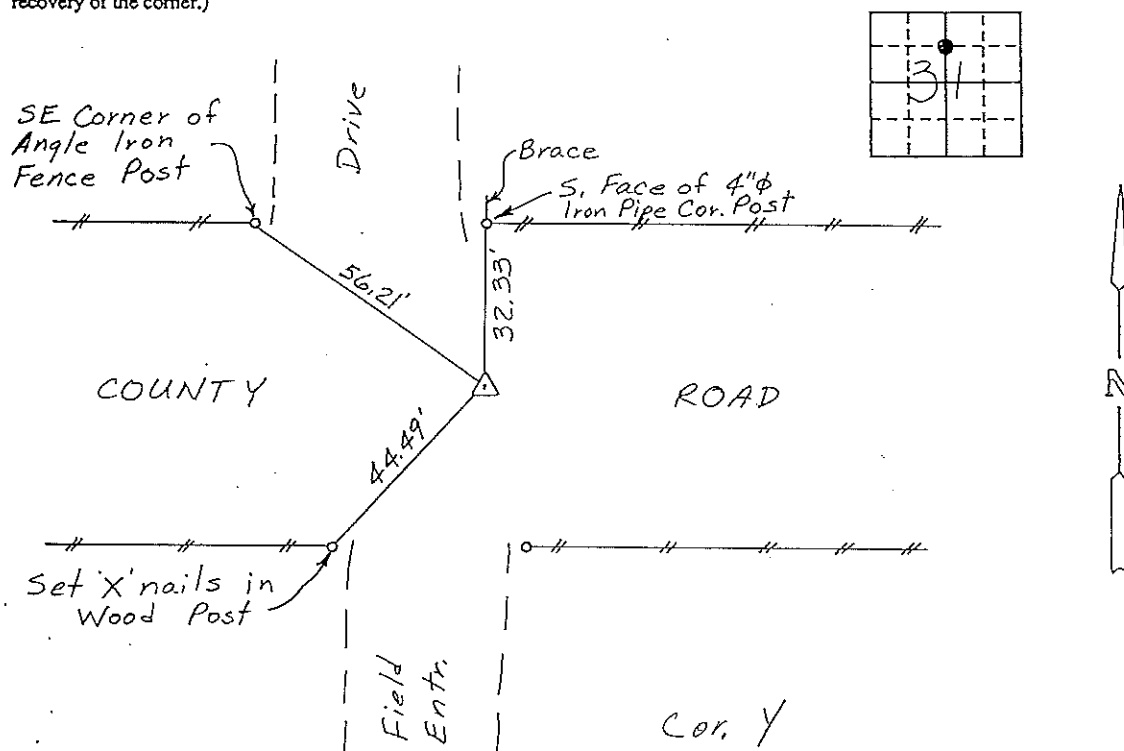
Land Survey Monuments situated in Section 31, Township 96 NORTH, Range 11 WEST, of the Fifth Principal Meridian, CHICKASAW County, Iowa.  
Previously recorded in (NONE) in County Recorder's Office.

(book, page, document number, etc.)  
(Show reason for preparing this certificate, the evidence and detailed procedures used in establishing the corner positions and monumentation found or placed.)

Monument Description and Remarks: NW CORNER, SW 1/4 - NE 1/4, SECTION 31-T96N-R11W:  
SET 1/2" Ø REBAR WITH CAP ON E OF COUNTY ROAD (ACCORDING  
TO RECORD) & IN LINE WITH 1/4 SECTION LINE FENCE N&S.

## PLAN - VIEW

(Show a minimum of three reference ties to durable physical objects, relevant monuments and physical conditions that will enable recovery of the corner.)



NW CORNER, SW 1/4 - NE 1/4, SECTION 31-T96N-R11W

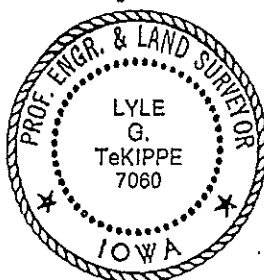
I hereby certify that the survey work was completed and this certificate was prepared by me or under my direct personal supervision and that I am a duly registered land surveyor under the laws of the state of Iowa.

Signature: Lyle G. TeKippe  
Name typed or printed: Lyle G. TeKippe

Date: 11-24-92 Reg. No. 7060

My Registration Expires December 31, 1992

SEAL



Corners	Section	Twp	Range
NW Cor.	31	96N	11W
SW 1/4 - NE 1/4			

*Placed  
in the Book  
12/7/92*

150-491

"County Engineers Copy"