

UNITED STATES PUBLIC LAND SURVEY CORNER CERTIFICATE

OF

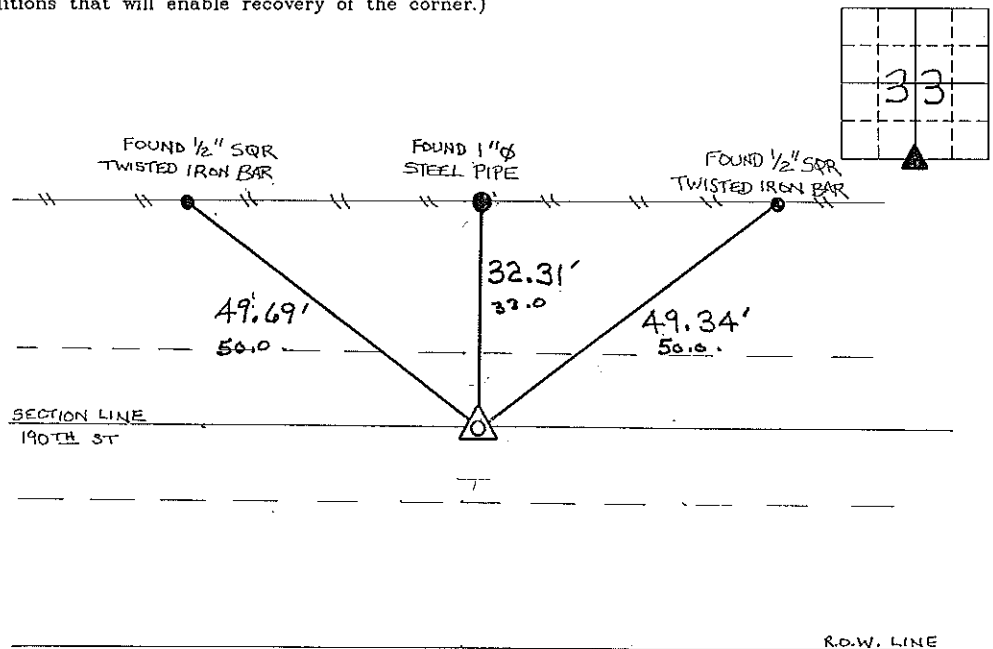
Land Survey Monuments situated in Section 33, Township 96 North, Range 11 West, of the Fifth Principal Meridian, CHICKASAW County, Iowa.
Previously recorded in NONE in County Recorder's Office.
(book, page, document number, etc.)

(Show reason for preparing this certificate, the evidence and detailed procedures used in establishing the corner positions and monumentation found or placed.)

Monument Description and Remarks: S 1/4 CORNER SECTION 33 T96N R11W:
FOUND 1/2" SQR TWISTED IRON BAR, E OF 190TH ST. FROM TIES OBTAINED FROM
THE CHICKASAW COUNTY ENGINEERS OFFICE.

PLAN - VIEW

(Show a minimum of three reference ties to durable physical objects, relevant monuments and physical conditions that will enable recovery of the corner.)



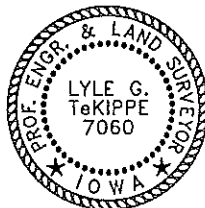
Cor. A

S 1/4 CORNER SECTION 33 T96N R11W

I hereby certify that the survey work was completed and this certificate was prepared by me or under my direct personal supervision and that I am a duly registered land surveyor under the laws of the state of Iowa.

Signature: Lyle G. TeKippe
Lyle G. TeKippe
Date: 11-1-95 Reg. No. 7060
My Registration Renewal Date is December 31, 1996

Seal



List Corners to be Indexed			
Corners	Section	Twp.	Range
S 1/4	33	96N	11W

Cor A 33-96-11

Placed in tie
book 11/29/95

159-252

"County Engineer's Copy"