

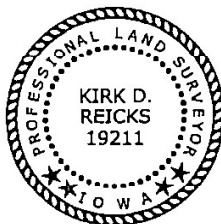
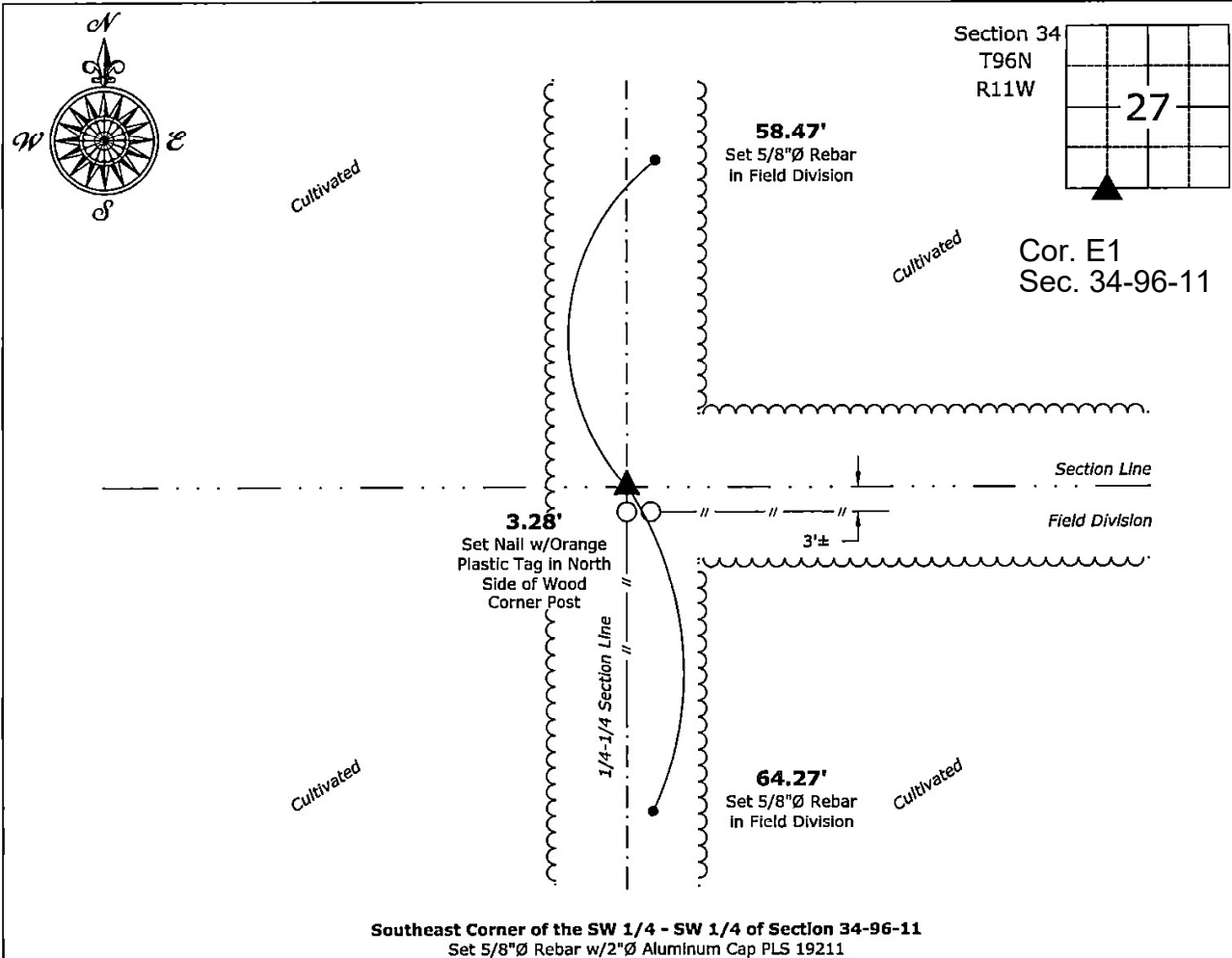
United States Public Land Survey Corner Certificate

This certificate is being prepared in compliance with Iowa Code Chapter 355.11 because:

- ☒ There is no certificate on file for this corner.
☐ There are no longer three valid ties of record.
☐ There are changes to reference ties of record.
☐ There is change of monumentation of record.
☐ To clarify description of record monument (ties).

Southeast Corner of the SW 1/4 - SW 1/4: Set 5/8"Ø Rebar w/2"Ø Aluminum Cap PLS 19211 equidistant and on line between the South 1/4 and Southwest Corners of said Section.

(Show a minimum of three reference ties to durable physical objects, relevant monuments and physical conditions that will enable recovery of the corner.)



Kath D. Kent 6-28-2023

Date:

My license renewal date is December 31, 2024:
 Sheets covered by this seal: Individual sheet only

Corner	Section	Township	Range
SE-SW-SW	27	96	11

FB: Chickasaw 12, Page(s) 13,17-22

File: S:_ Projects - NHO\County Control Systems - NHO\CHICKASAW\CHICK-23\CHICK-23-2022.dwg, 6/28/2023 7:41:32 AM