

Chickasaw Co. Recorder  
Cindy Messersmith  
Fee Book 2008-1036  
05/29/2008 @0357PM  
SCC SEC COR CERT  
Book: Page: # Pages: 1  
Total Fees: \$7.00

Herold - Reicks Surveying, 25 1/2 East Main Street, Suite 204, New Hampton, IA 50659, Ph. 641-394-2725

## UNITED STATES PUBLIC LAND SURVEY CORNER CERTIFICATE

Land Survey Monuments situated in:

Section 3, Township 96 North, Range 11 West of the Fifth Principal Meridian,  
Chickasaw County, Iowa. Previously recorded in none

in County Recorder's Office.

(book, page, document number, etc.)

(Show reason for preparing this certificate, the evidence and detailed procedures used in establishing the corner positions and monumentation found or placed.)

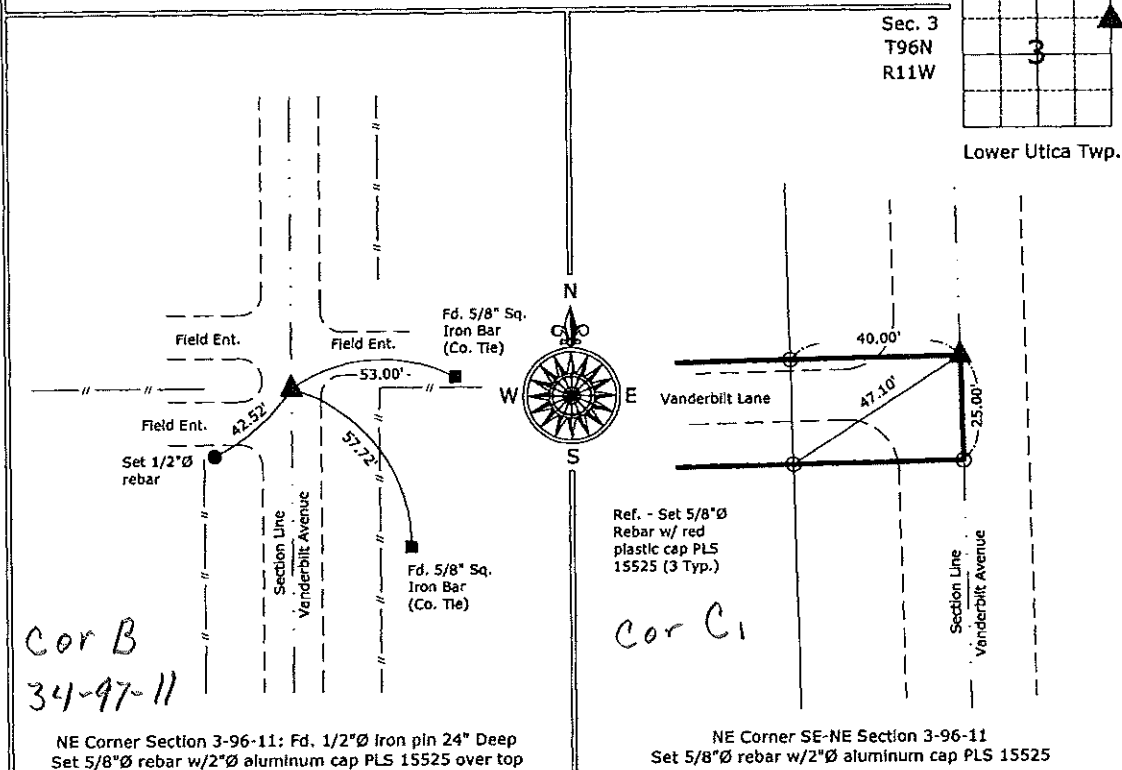
### Monument Description and Remarks:

NE Corner Section 3-96-11: Fd. 1/2"Ø iron pin 24" Deep from information obtained from the County Engineer's office in Field Book "Upper Utica Twp." Section 34, Corner B. Set 5/8"Ø rebar w/2"Ø aluminum cap PLS 15525 over top.

NE Corner SE-NE Section 3-96-11: Set 5/8"Ø rebar w/2"Ø aluminum cap PLS 15525 on line between the NE and E 1/4 corners at a prorated distance from the original government notes.

### PLAN - VIEW

(Show a minimum of three reference ties to durable physical objects, relevant monuments and physical conditions that will enable recovery of the corner.)



File: S:\Projects\2008-041\dwg\2008-041.dwg, 5/28/2008 4:14:47 PM



I hereby certify that this land surveying document was prepared and the related survey work was performed by me or under my direct personal supervision and that I am a duly licensed Land Surveyor under the laws of the State of Iowa.

Paul R. Herold 5-28-08

Paul R. Herold Date:

License number 15525

My license renewal date is December 31, 2008.

Sheets covered by this seal: Individual sheet only

### List Corners to be Indexed

Corners	Section	Twp.	Range
NE	3	96	11
NE-SE-NE	3	96	11

Project Number: 2008-041

FB: Chickasaw County 1, Pgs. 67-69