

'03 JAN 27 AM 9 20

CINDY MESSERSMITH  
COUNTY RECORDER

TeKIPPE ENGINEERING, P.C., 128 South Vine Street, West Union, Iowa 52175 Phone (563) 422-5131

## UNITED STATES PUBLIC LAND SURVEY CORNER CERTIFICATE

OF

Land Survey Monuments situated in Section 4, Township 96 North, Range 11 West of the Fifth Principal Meridian, CHICKASAW County, Iowa.  
Previously recorded in none in County Recorder's Office.  
(book, page, document number, etc.)

(Show reason for preparing this certificate, the evidence and detailed procedures used in establishing the corner positions and monumentation found or placed.)

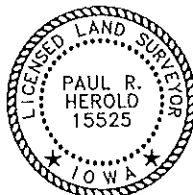
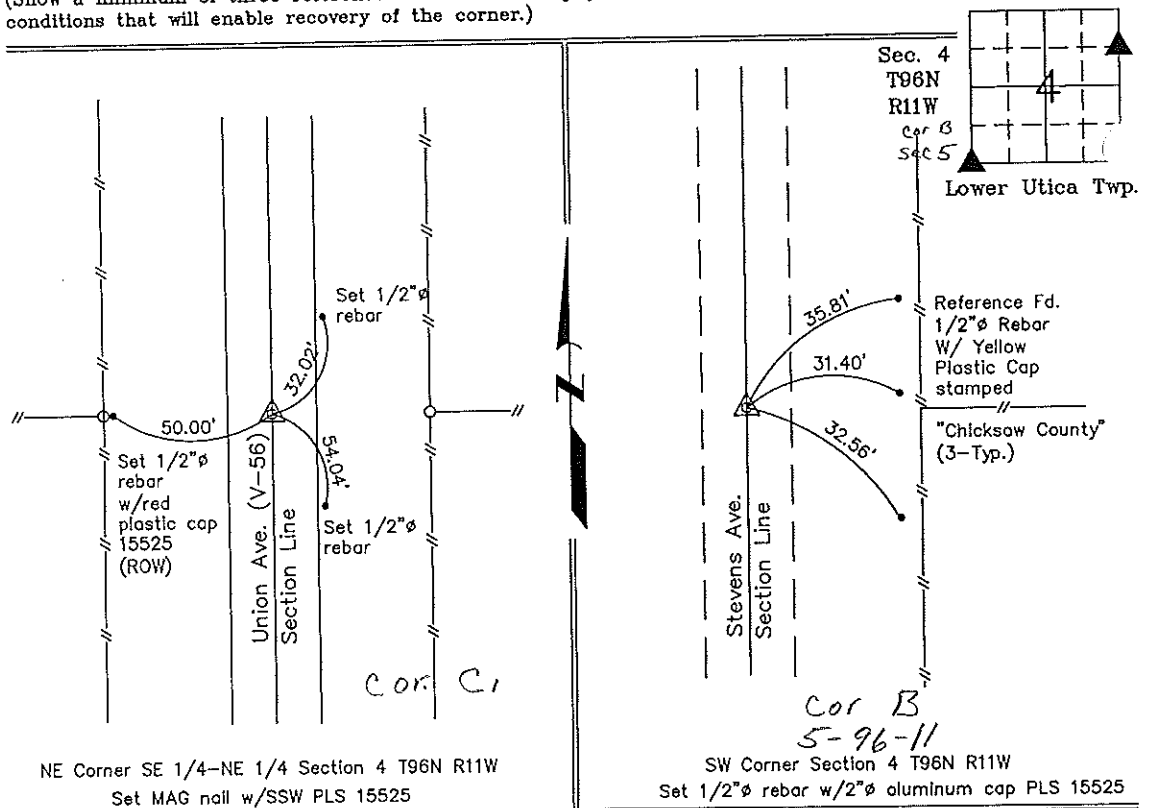
Monument Description and Remarks: Northeast Corner of the Southeast Quarter of the Northeast Quarter of Section 4 T96N R11W: Set Mag Nail w/SSW PLS 15525 on line between the Northeast Corner and the East 1/4 Corner at a prorated distance from original government notes.

Southwest Corner Section 4 T96N R11W: Fd. 5/8"Ø iron pin from County ties in Field Book "Lower Utica Twp." Sec 5 Corner "B".

## PLAN - VIEW

49611ju.dwg Project Number 02267.LS  
FB. 46J PG. 48-52

(Show a minimum of three reference ties to durable physical objects, relevant monuments and physical conditions that will enable recovery of the corner.)



I hereby certify that this land surveying document was prepared and the related survey work was performed by me or under my direct personal supervision and that I am a duly licensed Land Surveyor under the laws of the State of Iowa.

*Paul R. Herold* 1-23-03  
Paul R. Herold Date

License number 15525  
My license renewal date is December 31, 2004.  
Sheets covered by this seal: Individual

List Corners to be Indexed			
Corners	Section	Twp.	Range
NE-SE-NE	4	96N	11W
SW	4	96N	11W

X:\Section Corners\Sec. 04V4-96-11ju.dwg

County Engineer  
Corr