

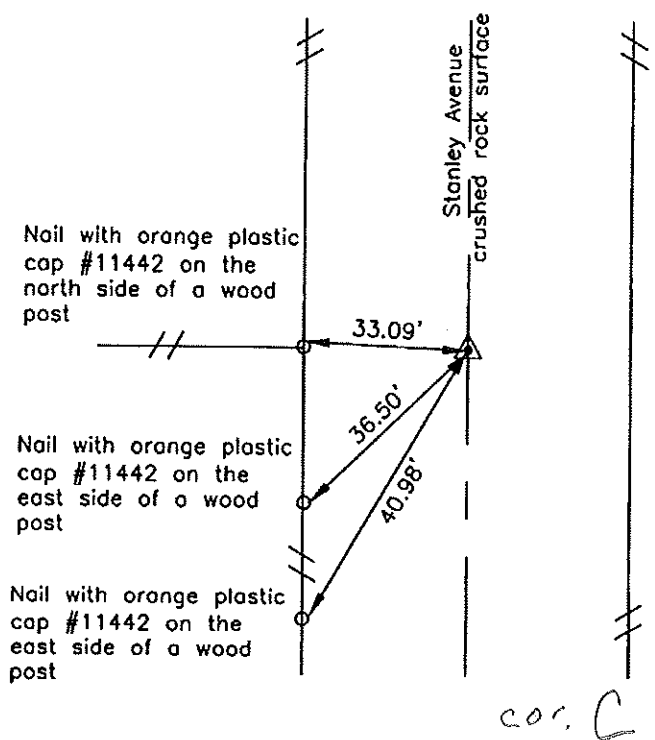
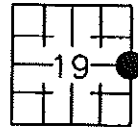
Prepared by: Erdman Engineering, P.C., 708 Commerce Drive, P.O. Box 246, Decorah, Iowa 52101 (563) 382-4194

**United States Public Land Survey Corner Certificate**  
 of

Land Survey Monuments situated in Section 19, Township 97, Range 11 West of the 5th Principal Meridian in Chickasaw County, Iowa. Previously recorded in does not apply in the county Recorder's Office.

Monument Description and Remarks: This certificate is prepared in accordance with Section 193C of the Code of Iowa. No previous certificate has been filed for this corner location. Chickasaw County Engineer's Reference Ties show that on "I.P." was set midway between fences in 1929 and found in 1949, dug for and not found in 2002 and a rebar with yellow plastic cap "Chickasaw County" was set 2661.81' north of the SE Corner and at the split of the fences, for Construction Only. We found the rebar with yellow plastic cap at the approximate centerline of the county road and in line with the fence line running west. The rebar is 2661.54' north of the SE Corner and 2633.80' south of the NE Corner. We used the monument as the E ¼ Corner of Section 19, Township 97 North, Range 11 West.

Plan-View



I hereby certify that this land surveying document was prepared and the related survey work was performed by me or under my direct personal supervision and that I am a duly licensed Land Surveyor under the laws of the State of Iowa.

Signature: Lindsay Erdman  
 Lindsay Erdman, P.E. and P.L.S. Iowa License Number 11442

Date: 3/4/10

My license renewal date is December 31, 2010

Corner(s) to be Indexed			
Corner	Section	Township	Range
E 1/4	19	97	11