

MOHN SURVEYING INC. ROGER R. MOHN 1890 GREAT RIVER ROAD LANSING, IOWA 52151 (563) 538-4067

TIES. DWG B-16

SLSI 9-90

UNITED STATES PUBLIC LAND SURVEY CORNER CERTIFICATE

OF

Land Survey Monuments situated in Section 19, Township 97 North, Range 11 West, of the Fifth Principal Meridian, Chickasaw County, Iowa.
 Previously recorded in Bk. 2003, Pg. 0910 & Bk. 2013, Pg. 0031 in County Recorder's Office.
 (book, page, document number, etc.)

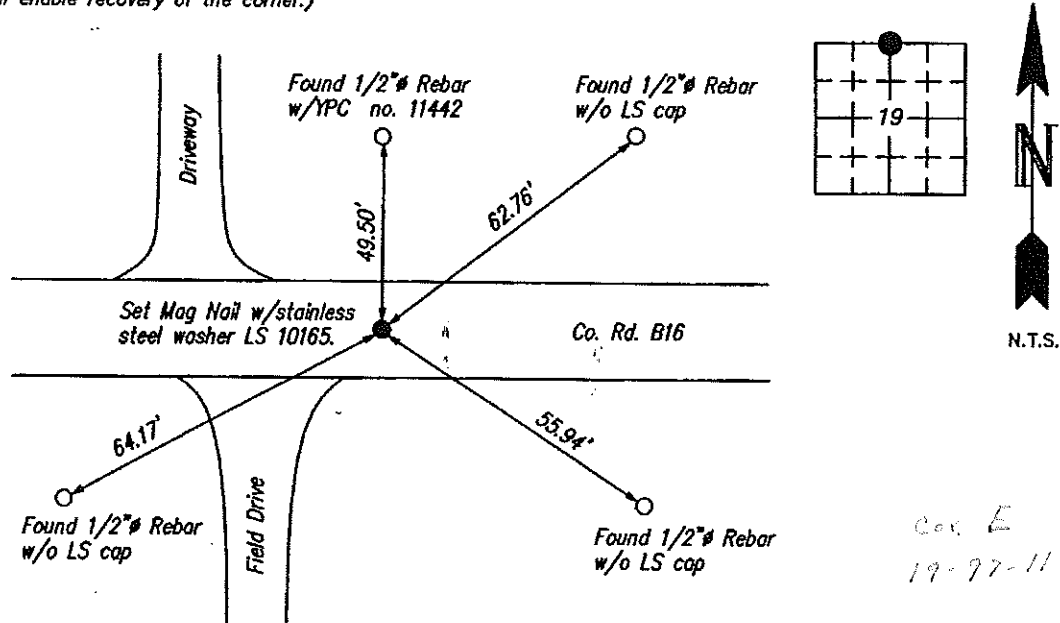
(Show reason for preparing this certificate, the evidence and detailed procedures used in establishing the corner positions and monumentation found or placed.)

Monument Description and Remarks: Found Mag Nail w/stainless steel washer LS 19211 at the corner position as per recorded USPLS Corner Certificate. Iowa State Plane Coordinate System North Zone (1401) Horizontal NAD 83 (1996) coordinates are as follows: N=3907763.014 E=5270318.797.

Corner monument was covered with HMA roadway pavement overlay. Set Mag Nail w/stainless steel washer LS 10165 in HMA pavement.

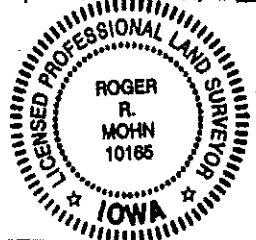
PLAN - VIEW

(Show a minimum of three reference ties to durable physical objects, relevant monuments and physical conditions that will enable recovery of the corner.)



I hereby certify that this land surveying document was prepared by me or under my direct personal supervision and that I am a duly Registered Land Surveyor under the laws of the state of Iowa.

Roger R. Mohn 10/9, 2013
 ROGER R. MOHN, P.E. & L.S. Iowa Registration No. 10165
 My registration expires December 31, 2014



SEAL

Comers	Section	Twp	Range
North 1/4 Cor. of 19		97N	11W

Prepared by & Return to: Harold - Reicks Surveying, 10 East Main Street, New Hampton, IA 50659, Ph. 641-354-2725

UNITED STATES PUBLIC LAND SURVEY CORNER CERTIFICATE

Land Survey Monuments situated in Section 19, Township 97 North, Range 11 West of the Fifth Principal Meridian, Chickasaw County, Iowa. 1.) Previously recorded in Doc. #2003-0910 in the County Recorder's office. 2.) Not previously recorded in the County Recorder's office.

This certificate is being prepared in compliance with Iowa Code Chapter 355.11 because:

- 2 There is no certificate on file for this corner.
- There are no longer three valid ties of record.
- There are changes to reference ties of record.
- 1 There is change of monumentation of record.
- To clarify description of record monument (ties).

Monument Description and Remarks:

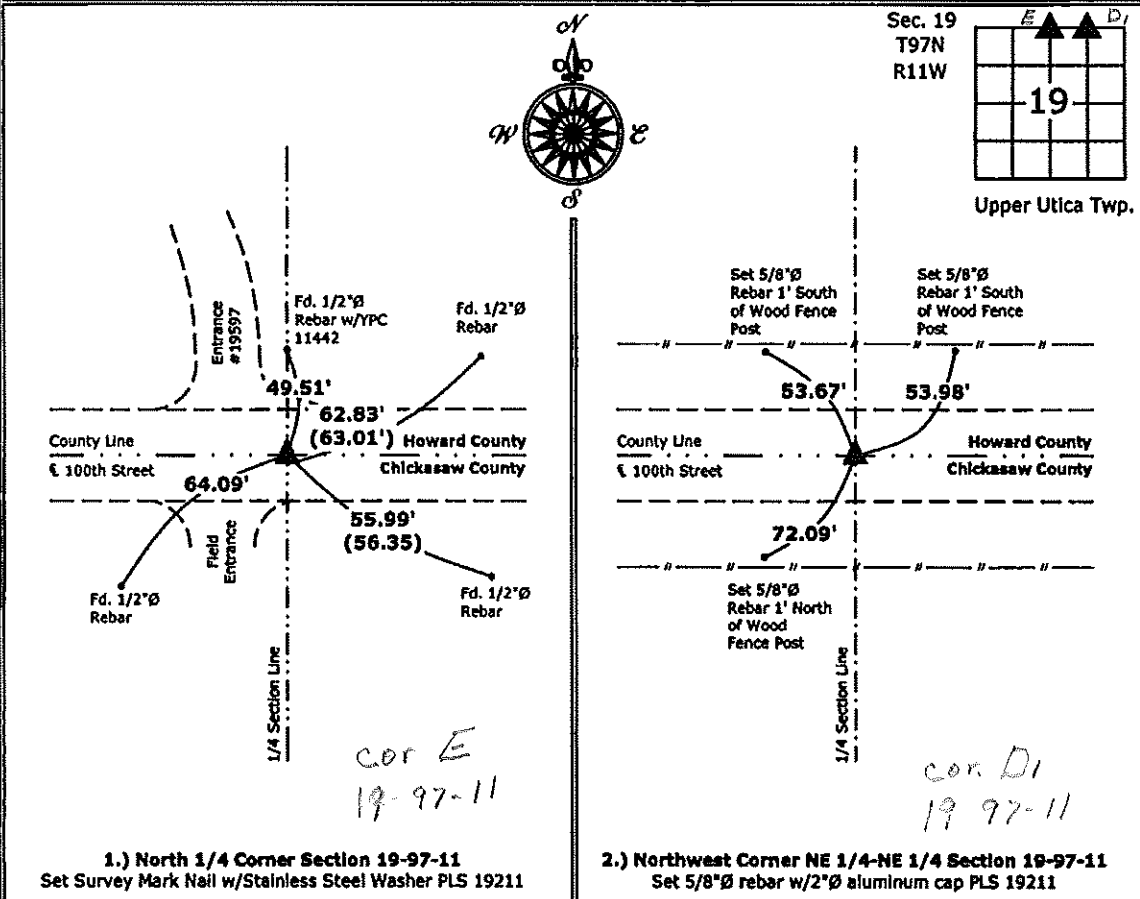
1.) **North 1/4 Corner:** Set Survey Mark Nail w/Stainless Steel Washer PLS 19211 with information obtained from the previous Section Corner Certificate.

2.) **Northwest Corner NE 1/4-NE 1/4:** Set 5/8"Ø rebar with 2"Ø aluminum cap PLS 19211 equidistant and online between the North 1/4 and Northeast Corners of Section 19.

Note: Both corners were used for a survey in Howard County.

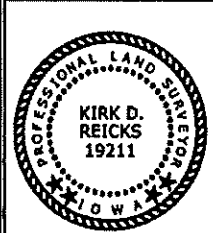
PLAN - VIEW

(Show a minimum of three reference ties to durable physical objects, relevant monuments and physical conditions that will enable recovery of the corner.)



1.) North 1/4 Corner Section 19-97-11
 Set Survey Mark Nail w/Stainless Steel Washer PLS 19211

2.) Northwest Corner NE 1/4-NE 1/4 Section 19-97-11
 Set 5/8"Ø rebar w/2"Ø aluminum cap PLS 19211



I hereby certify that this land surveying document was prepared and the related survey work was performed by me or under my direct personal supervision and that I am a duly licensed Land Surveyor under the laws of the State of Iowa.
Kirk D. Reicks 1-7-13
 Kirk D. Reicks Date:
 License number 19211
 My license renewal date is December 31, 2014.
 Sheets covered by this seal: Individual sheet only

List Corners to be Indexed			
Corners	Section	Twp.	Range
N 1/4	19	97	11
NW NE NE	19	97	11

Project Number: 2012-219
 FB: Howard County 2, Pgs. 38-40

File 2003-0910

Lampman & Associates Robert M. Lampman E750 Roberts Rd. De Soto, Wisconsin 54624 (608)648-2288

UNITED STATES PUBLIC LAND SURVEY CORNER CERTIFICATE OF

Land Survey Monuments situated in Section 19, Township 97 North, Range 11 West
of the Fifth Principal Meridian, Chickasaw County, Iowa.

Previously recorded in no certificate on file in County Recorder's Office.
(book, page, document number, etc.)

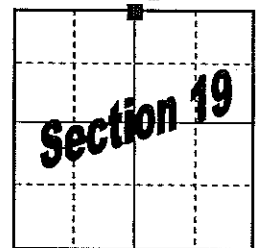
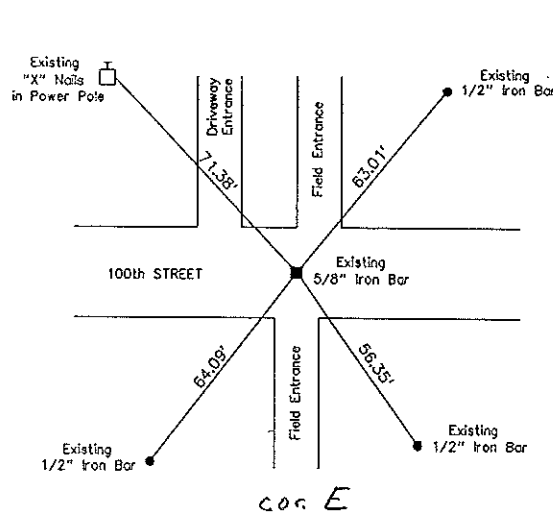
(Show reason for preparing this certificate, the evidence and detailed procedures used in establishing the corner positions and monumentation found or placed.)

Monument Description and Remarks:

Utilizing reference ties from the Chickasaw County Engineer's Office, found a 5/8" round iron bar at the corner.

PLAN VIEW

(Show a minimum of three reference ties to durable physical objects, relevant monuments and physical conditions that will enable recovery of the corner.)



Drawing not to scale.

I hereby certify that the survey work was completed and this certificate was prepared by me or under my direct personal supervision and that I am duly licensed land surveyor under the laws of the state of Iowa.

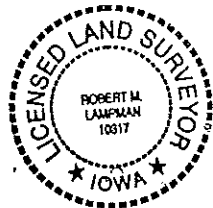
Signature: Robert M. Lampman

Date: 3-20-03 License No. 10317

My License Renewal Date Is:

12-31-04

SEAL



Corners	List Corners to Be Indexed		
	Section	Twp	Range
N 1/4 COR	19	97 North	11 West

Filed 4-2-03