

MOHN SURVEYING INC. ROGER R. MOHN 1890 GREAT RIVER ROAD LANSING, IOWA 52151 (563) 538-4067

TIES, DWG B-16 SLSI 9-90

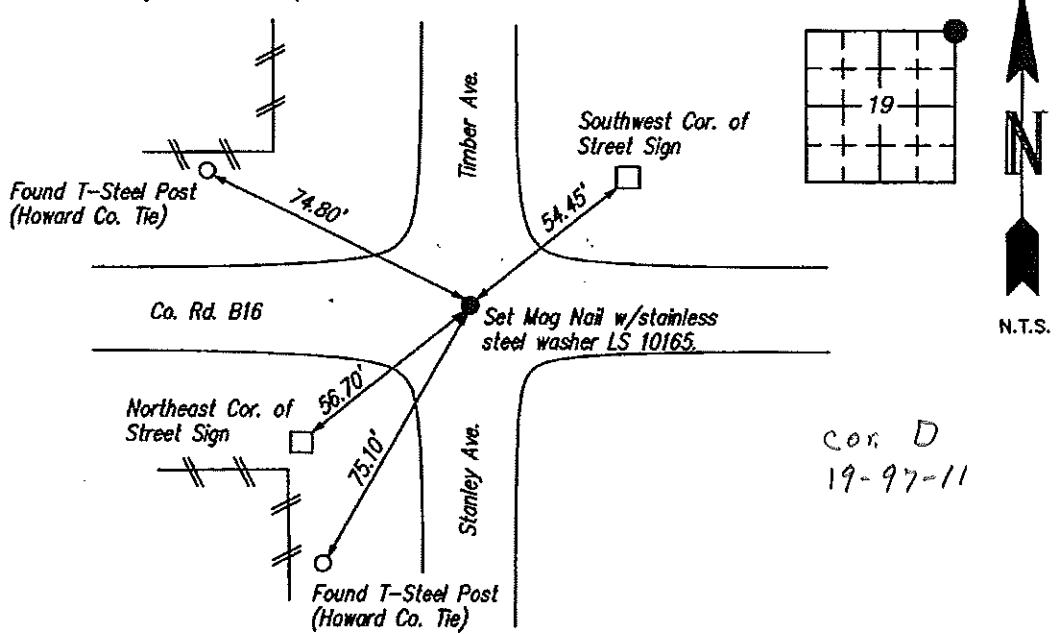
UNITED STATES PUBLIC LAND SURVEY CORNER CERTIFICATE

Land Survey Monuments situated in Section 19 OF 19, Township 97 North, Range 11 West, of the Fifth Principal Meridian, Chickasaw County, Iowa.
 Previously recorded in Book 2010, Page 0319 in County Recorder's Office.
(book, page, document number, etc.)

(Show reason for preparing this certificate, the evidence and detailed procedures used in establishing the corner positions and monumentation found or placed.)
 Monument Description and Remarks: Found Mag Nail w/stainless steel washer LS 11442 at the corner position as per recorded USPLS Corner Certificate. Iowa State Plane Coordinate System North Zone (1401) Horizontal NAD 83 (1996) coordinates are as follows: N=3907770.514 E=5272952.861
Corner monument was covered with HMA roadway pavement overlay. Set Mag Nail w/stainless steel washer LS 10165 in HMA pavement.

PLAN - VIEW

(Show a minimum of three reference ties to durable physical objects, relevant monuments and physical conditions that will enable recovery of the corner.)

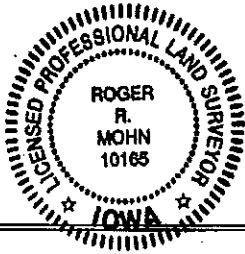


I hereby certify that this land surveying document was prepared by me or under my direct personal supervision and that I am a duly Registered Land Surveyor under the laws of the state of Iowa.

Roger R. Mohn 10/9/2013
 ROGER R. MOHN, P.E. & L.S. Iowa Registration No. 10165
 My registration expires December 31, 2014

Corners	List Corners to be Indexed		
	Section	Twp	Range
NE Cor. of	19	97N	11W

SEAL



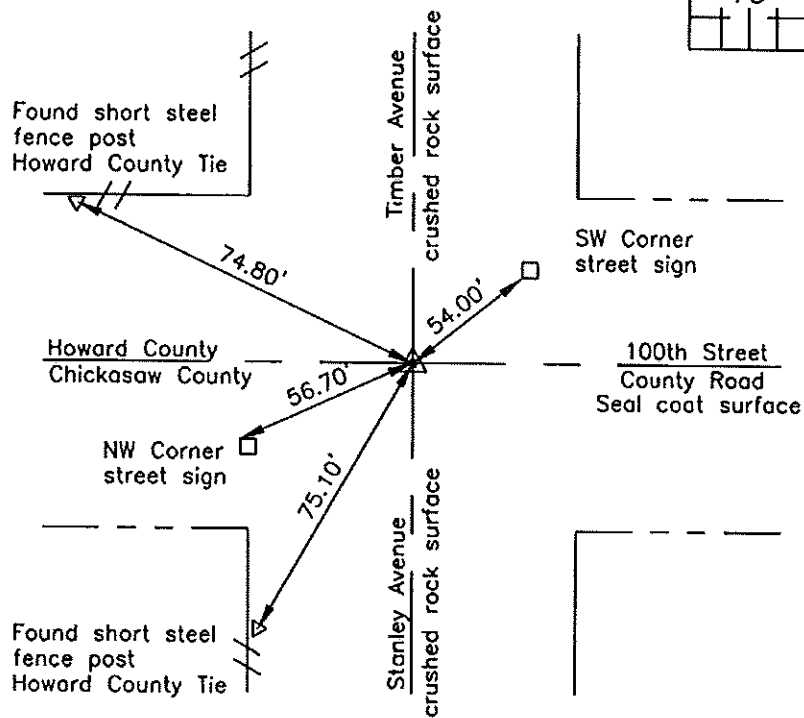
Prepared by: Erdman Engineering, P.C., 708 Commerce Drive, P.O. Box 246, Decorah, Iowa 52101 (563) 382-4194

United States Public Land Survey Corner Certificate
 of

Land Survey Monuments situated in Section 19, Township 97, Range 11 West of the 5th Principal Meridian in Chickasaw County, Iowa. Previously recorded in does not apply in the county Recorder's Office.

Monument Description and Remarks: This certificate is prepared in accordance with Section 193C of the Code of Iowa. No previous certificate has been filed for this corner location. Chickasaw County Engineer's Reference Ties show that a gas pipe was found in 1963. The Corner Certificate record in Book I page 310 in the Howard County Recorder's Office shows that a 3/4" diameter steel pipe was found in 2005. We were not able to find the monument previously used due to the Seal Coat Surface of the County Road. Based on the previously recorded certificate in the Howard County Recorder's Office we found two short steel fence posts and two street signs that had been used previously as ties markers. From these ties we set a Mag-nail with 1 1/2" diameter stainless steel washer #11442 as the NE Corner of Section 19, Township 97 North, Range 11 West.

Plan-View



Cor D

I hereby certify that this land surveying document was prepared and the related survey work was performed by me or under my direct personal supervision and that I am a duly licensed Land Surveyor under the laws of the State of Iowa.

Signature Lindsay Erdman
 Lindsay Erdman, P.E. and P.L.S. Iowa License Number 11442

Date: 3/4/10

My license renewal date is December 31, 2010

Corner(s) to be Indexed

Corner	Section	Township	Range
NE	19	97	11