

MOHN SURVEYING INC. ROGER R. MOHN 1890 GREAT RIVER ROAD LANSING, IOWA 52151 (563) 538-4067

TIES. DWG B-16

SLSI 9-90

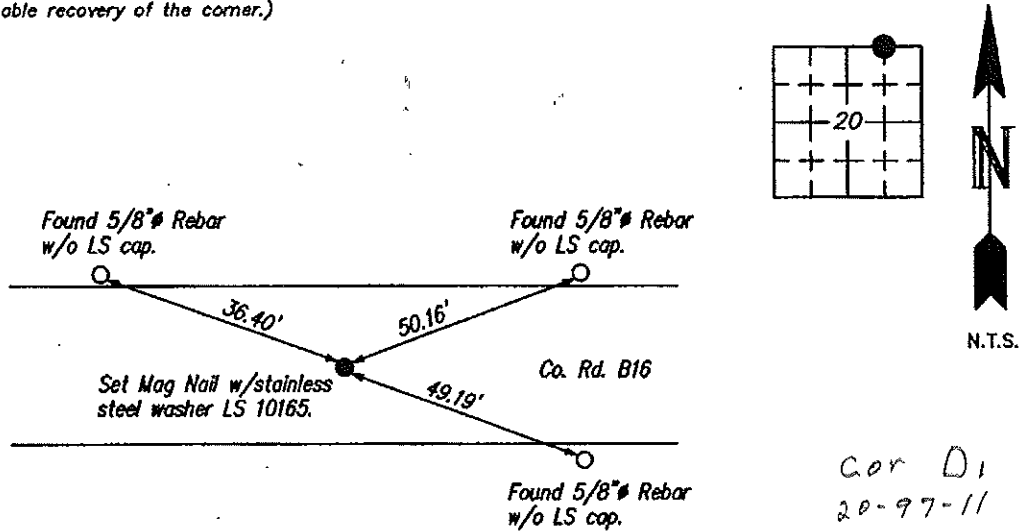
**UNITED STATES PUBLIC LAND SURVEY CORNER CERTIFICATE**

Land Survey Monuments situated in Section 20 OF 20, Township 97 North, Range 11 West, of the Fifth Principal Meridian, Chickasaw County, Iowa.  
 Previously recorded in Book 2013, Page 0033 in County Recorder's Office.  
 (book, page, document number, etc.)

(Show reason for preparing this certificate, the evidence and detailed procedures used in establishing the corner positions and monumentation found or placed.)  
 Monument Description and Remarks: Found Mag Nail w/stainless steel washer LS 19211 at the corner position as per recorded USPLS Corner Certificate Iowa State Plane Coordinate System North Zone (1401) Horizontal NAD 83 (1996) coordinates are as follows: N=3907868.420 E=5276912.567  
Corner monument was covered with HMA roadway pavement overlay. Set Mag Nail w/stainless steel washer LS 10165 in HMA pavement.

**PLAN - VIEW**

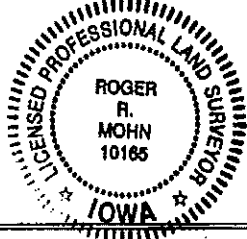
(Show a minimum of three reference ties to durable physical objects, relevant monuments and physical conditions that will enable recovery of the corner.)



I hereby certify that this land surveying document was prepared by me or under my direct personal supervision and that I am a duly Registered Land Surveyor under the laws of the state of Iowa.

Roger R. Mohn 10/9/2013  
 ROGER R. MOHN, P.E. & L.S. Iowa Registration No. 10165  
 My registration expires December 31, 2014

SEAL



List Corners to be Indexed			
Corners	Section	Twp	Range
NW Cor. of NE1/4-NE1/4	20	97N	11W

Prepared by & Return to: Harold - Reicks Surveying, 10 East Main Street, New Hampton, IA 50659, Ph: 641-394-2725

### UNITED STATES PUBLIC LAND SURVEY CORNER CERTIFICATE

Land Survey Monuments situated in Section 20, Township 97 North, Range 11 West of the Fifth Principal Meridian, Chickasaw County, Iowa. 1., 2.) Not previously recorded in the County Recorder's office.

This certificate is being prepared in compliance with Iowa Code Chapter 355.11 because:

- 1 & 2 There is no certificate on file for this corner.
- There are no longer three valid ties of record.
- There are changes to reference ties of record.
- There is change of monumentation of record.
- To clarify description of record monument (ties).

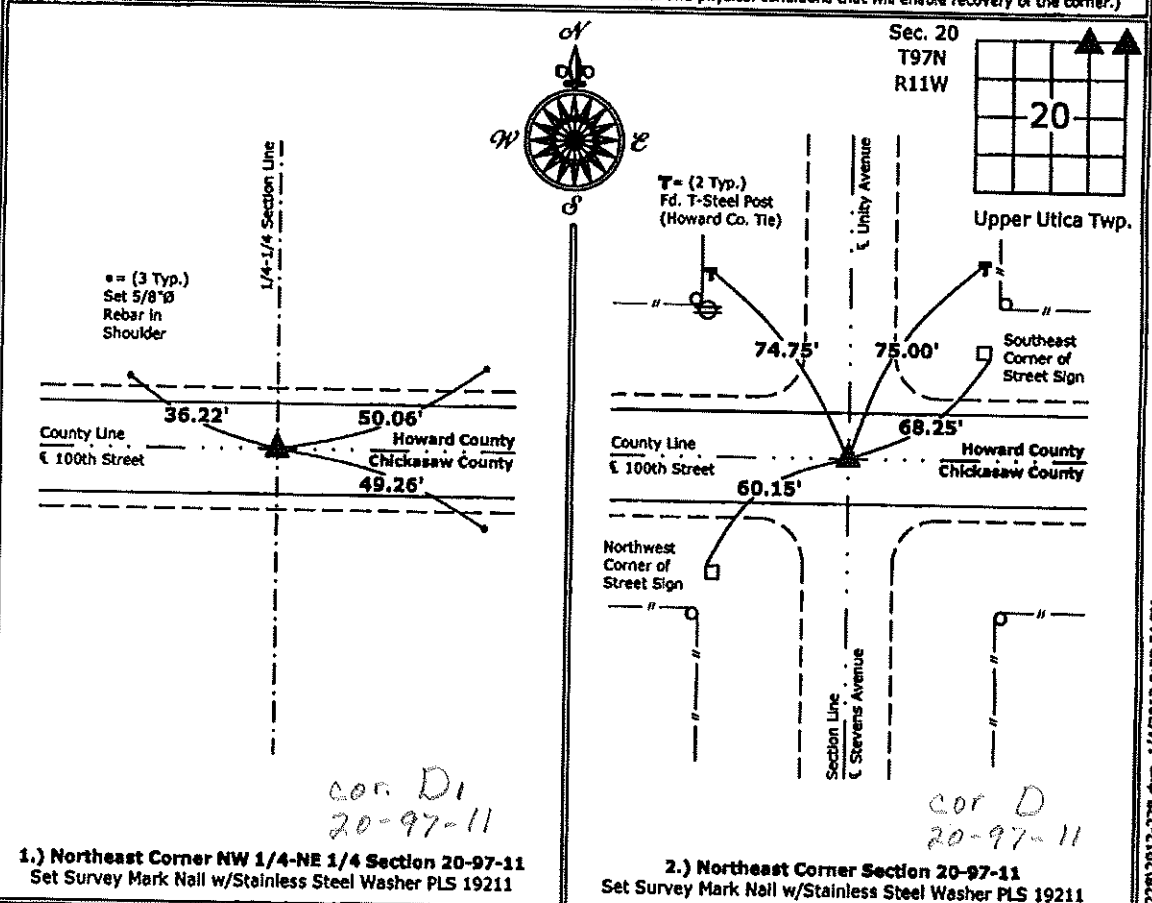
Monument Description and Remarks:

1.) **Northeast Corner NW 1/4-NE 1/4:** Set Survey Mark Nail w/Stainless Steel Washer PLS 19211 equidistant and online between the Northeast and North 1/4 Corners of Section 20.

2.) **Northeast Corner:** Set Survey Mark Nail w/Stainless Steel Washer PLS 19211 with information obtained from the previous Section Corner Certificate, recorded in Bk. I, Pg. 336, on file in the Howard County Recorder's Office, Cresco, Iowa.

#### PLAN - VIEW

(Show a minimum of three reference ties to durable physical objects, relevant monuments and physical conditions that will enable recovery of the corner.)



1.) **Northeast Corner NW 1/4-NE 1/4 Section 20-97-11**  
 Set Survey Mark Nail w/Stainless Steel Washer PLS 19211

2.) **Northeast Corner Section 20-97-11**  
 Set Survey Mark Nail w/Stainless Steel Washer PLS 19211



I hereby certify that this land surveying document was prepared and the related survey work was performed by me or under my direct personal supervision and that I am a duly licensed Land Surveyor under the laws of the State of Iowa.  
*Kirk D. Reicks 1-7-13*  
 Kirk D. Reicks Date:  
 License number 19211  
 My license renewal date is December 31, 2014.  
 Sheets covered by this seal: Individual sheet only

List Corners to be Indexed			
Corners	Section	Twp.	Range
NE-NW-NE	20	97	11
NE	20	97	11

Project Number: 2012-218  
 FB: Chickasaw 5, Pg. 18