



Prepared by & Return to: Herald - Reicks Surveying, 10 East Main Street, New Hampton, IA 50659, Ph. 641-394-2725

United States Public Land Survey Corner Certificate

Land Survey Monument situated in
Section **21**, Township **97** North, Range **11** West of the Fifth Principal Meridian, **Chickasaw** County, Iowa.
On file in **Document #2015-0585** in the County Recorder's office.

This certificate is being prepared in compliance
with Iowa Code Chapter 355.11 because:



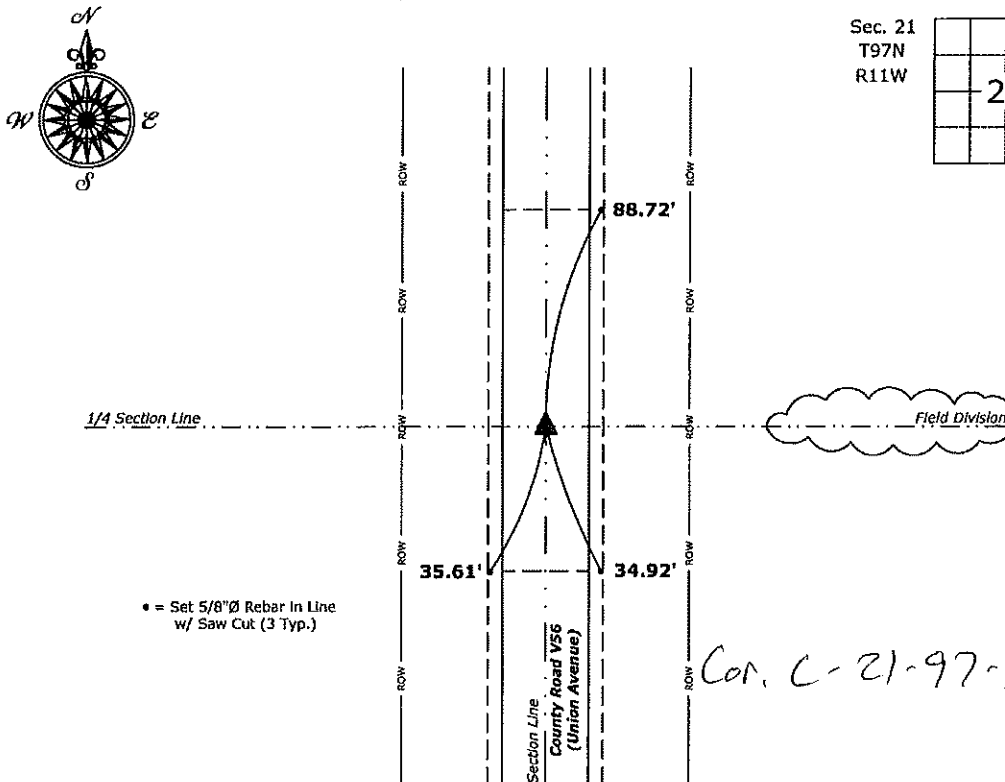
- ☐ There is no certificate on file for this corner.
- ☐ There are no longer three valid ties of record.
- ☐ There are changes to reference ties of record.
- ☒ There is change of monumentation of record.
- ☐ To clarify description of record monument (ties).

Monument Description and Remarks:

East 1/4 Corner: Set 1"Ø Bronze Survey Marker PLS 19211 at previous location (Found Survey Mark Nail with Stainless Steel Washer PLS 19211) with coordinates of the Corner obtained prior to highway reconstruction, Project No. FM-C019(89)--55-19.

Plan View

(Show a minimum of three reference ties to durable physical objects, relevant monuments and physical conditions that will enable recovery of the corner.)



East 1/4 Corner of Section 21-97-11
Set 1"Ø Bronze Survey Marker PLS 19211



I hereby certify that this land surveying document
was prepared and the related survey work was
performed by me or under my direct personal
supervision and that I am a duly licensed Land
Surveyor under the laws of the State of Iowa.

Kirk D. Reicks 6-17-20

Kirk D. Reicks

Date:

License number 19211

My license renewal date is December 31, 2020.

Sheets covered by this seal: Individual sheet only

List Corner to be Indexed

Corner	Section	Twp.	Range
E 1/4	21	97	11

Project Number: 2019-810

FB: 2019 Construction, Pgs. 14-36

Prepared by & Return to: Herold - Reicks Surveying, 10 East Main Street, New Hampton, IA 50659, Ph. 641-394-2725

UNITED STATES PUBLIC LAND SURVEY CORNER CERTIFICATE

Land Survey Monuments situated in Section **21**, Township **97** North, Range **11** West of the Fifth Principal Meridian, **Chickasaw** County, Iowa. **1., 2.)** Not previously recorded in the County Recorder's office.

This certificate is being prepared in compliance with Iowa Code Chapter 355.11 because:

1 & 2

☒ There is no certificate on file for this corner.
☐ There are no longer three valid ties of record.
☐ There are changes to reference ties of record.
☐ There is change of monumentation of record.
☐ To clarify description of record monument (ties).

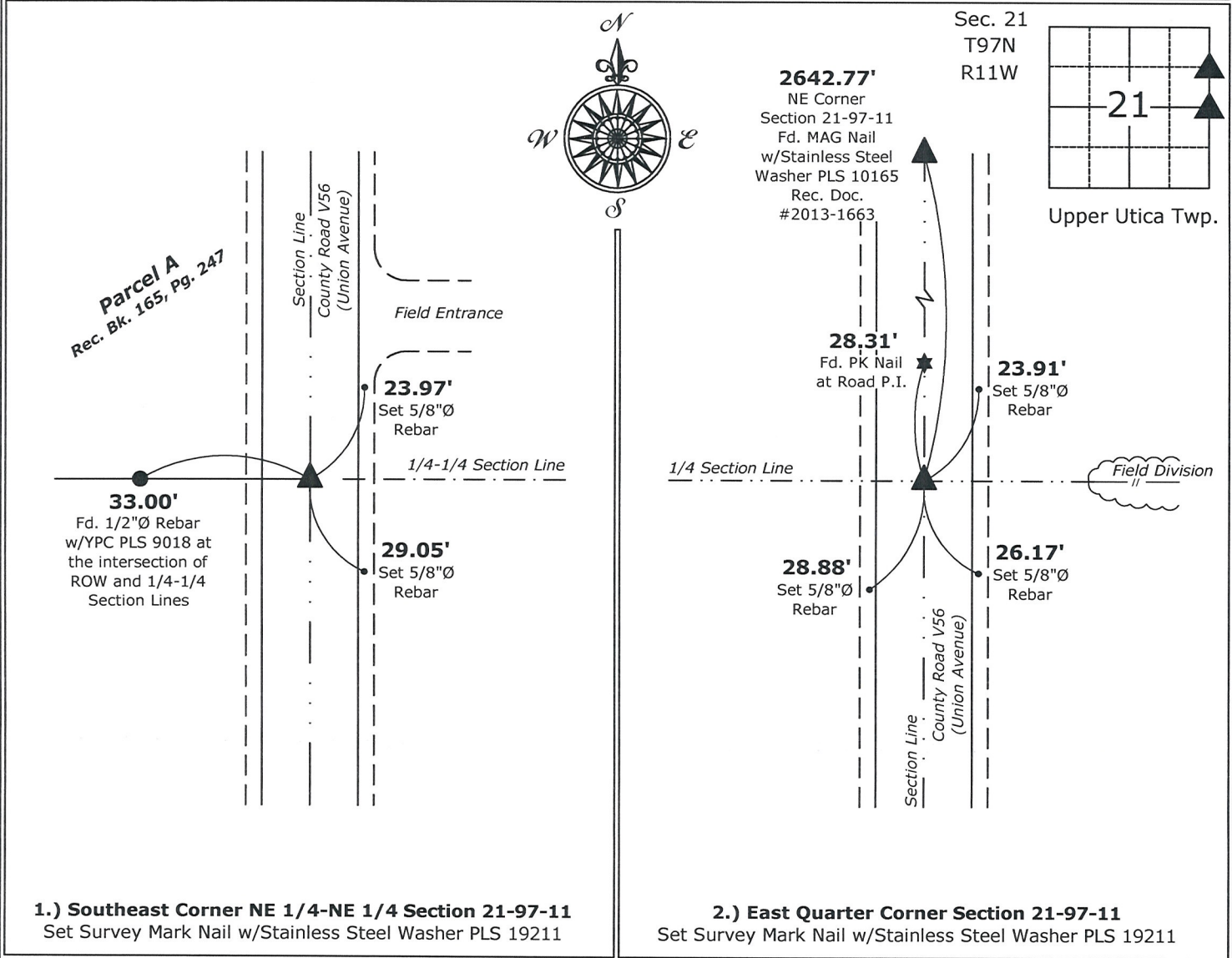
Monument Description and Remarks:

1.) Southeast Corner NE 1/4-NE 1/4: Set Survey Mark Nail w/Stainless Steel Washer PLS 19211 at the intersection of the monumented South Line of Parcel A and the East Line of NE Quarter of Section 21.

2.) East 1/4 Corner: Set Survey Mark Nail w/Stainless Steel Washer PLS 19211 at the intersection of the monumented East Line of the Northeast Quarter of Section 21 and a possession line fence from the East. Monument is ovetop of magnetic reading. County Engineer's notes state corner is the Road PI 28.31' North of set monument. Corner was set after comparing distances to adjacent corners in the Section and reviewing available field evidence.

PLAN - VIEW

(Show a minimum of three reference ties to durable physical objects, relevant monuments and physical conditions that will enable recovery of the corner.)



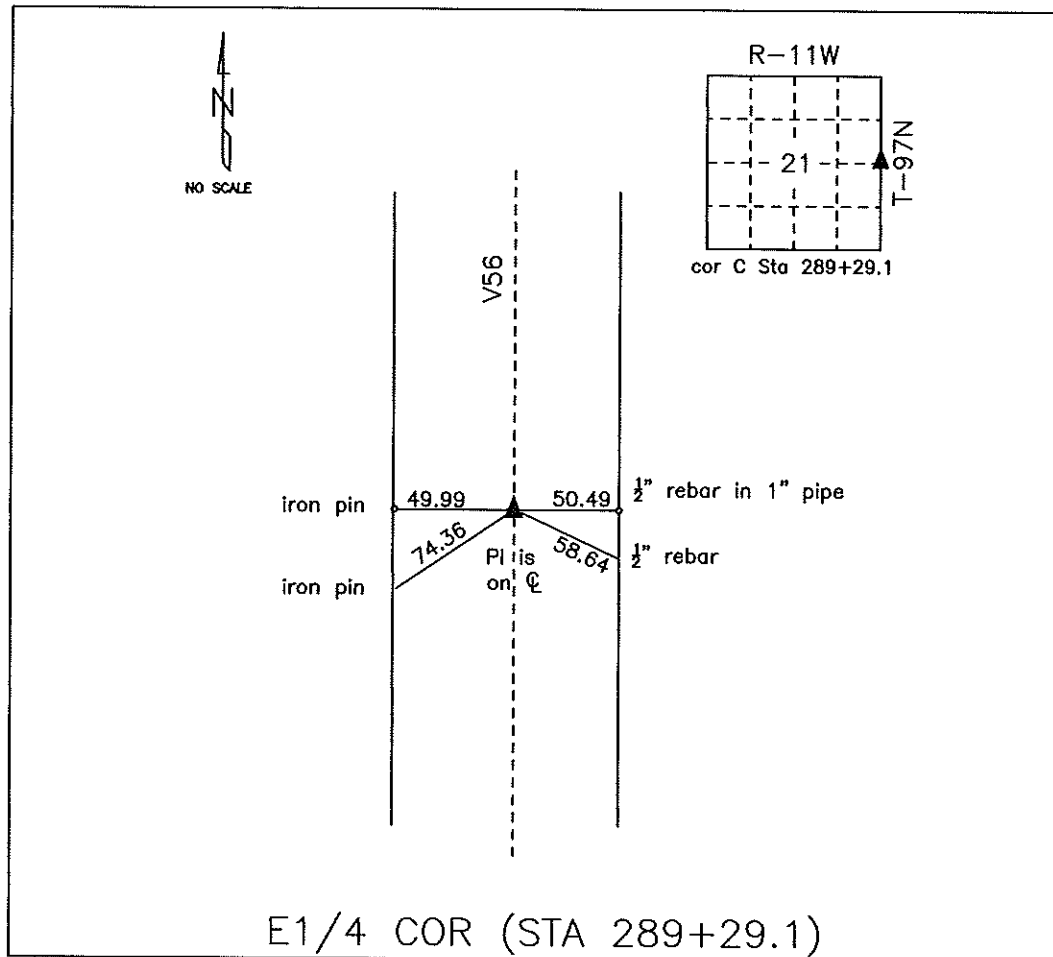
I hereby certify that this land surveying document was prepared and the related survey work was performed by me or under my direct personal supervision and that I am a duly licensed Land Surveyor under the laws of the State of Iowa.

Kirk D. Reicks 5-20-15
Kirk D. Reicks Date:
License number 19211
My license renewal date is December 31, 2016.
Sheets covered by this seal: Individual sheet only

List Corners to be Indexed			
Corners	Section	Twp.	Range
SE-NE-NE	21	97	11
E 1/4	21	97	11
Project Number: 2015-065			
FB: Chickasaw County 7, Pgs. 30-31			

COUNTY ENGINEER'S SECTION CORNER PRESERVATION RECORD

LAND SURVEY MONUMENT LOCATED IN SECTION 21, TOWNSHIP 97 N
NORTH, RANGE 11 W, OF THE 5TH P.M. Chickasaw COUNTY, IOWA
PREVIOUSLY RECORDED NONE



MONUMENT DESCRIPTION AND NARRATIVE Found PK nail in HMA mat

From Chickasaw County Project plans SN-188(9) found PI on center line. Information was also found
in the county engineer tie book.

All ties are GPS surveyed.

I AM NOT A REGISTERED LAND SURVEYOR UNDER THE LAWS OF THE STATE OF IOWA

JIM FOSTER CHICKASAW CO. DATE: 08/03/10