

Chickasaw Co. Recorder
 Cindy Messersmith
Fee Book 2013-1663
 10/10/2013 @ 10:08 AM
 SCC SEC COR CERT
 Book: Page: # Pages: 1
 Total Fees: \$7.00

MOHN SURVEYING INC. ROGER R. MOHN 1890 GREAT RIVER ROAD LANSING, IOWA 52151 (563) 538-4067
 TIES. DWG B-16 SLSI 9-90

UNITED STATES PUBLIC LAND SURVEY CORNER CERTIFICATE

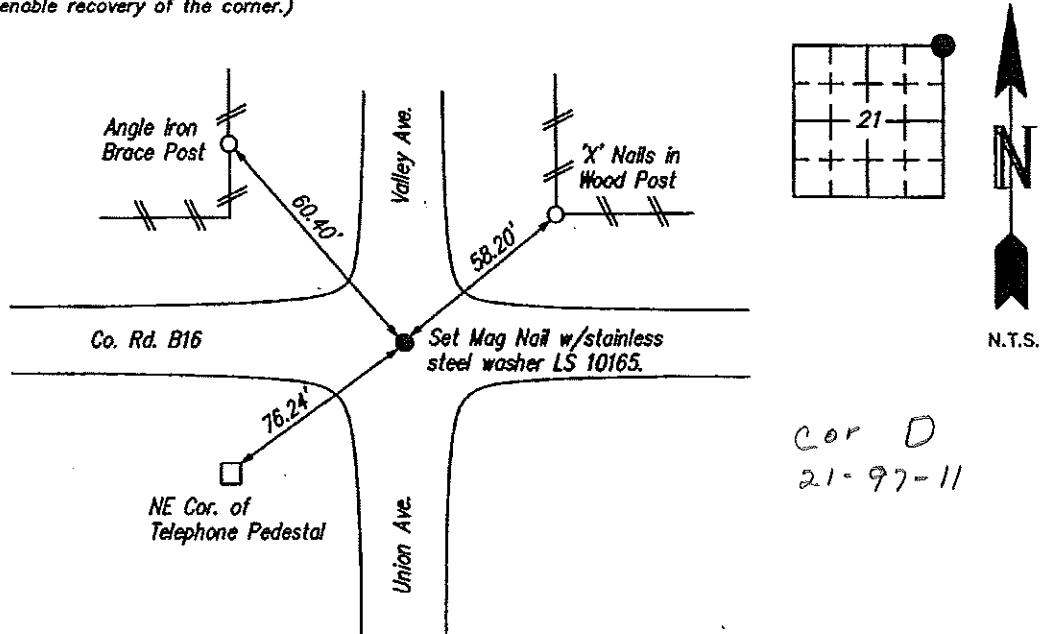
OF
 Land Survey Monuments situated in Section 21, Township 97 North, Range 11 West, of the Fifth Principal Meridian, Chickasaw County, Iowa.
 Previously recorded in Book 165, Page 248 in County Recorder's Office.
(book, page, document number, etc.)

(Show reason for preparing this certificate, the evidence and detailed procedures used in establishing the corner positions and monumentation found or placed.)

Monument Description and Remarks: Found PK Nail w/o LS cap at the corner position as per recorded USPLS Corner Certificate. Iowa State Plane Coordinate System North Zone (1401) Horizontal NAD 83 (1996) coordinates are as follows: N=3908001.665 E=5283542.330
Corner monument was covered with HMA roadway pavement overlay. Set Mag Nail w/stainless steel washer LS 10165 in HMA pavement.

PLAN - VIEW

(Show a minimum of three reference ties to durable physical objects, relevant monuments and physical conditions that will enable recovery of the corner.)

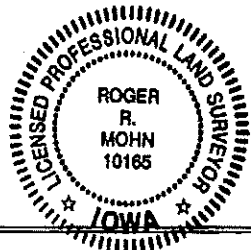


Cor D
 21-97-11

I hereby certify that this land surveying document was prepared by me or under my direct personal supervision and that I am a duly Registered Land Surveyor under the laws of the state of Iowa.

Roger R. Mohn 10/9 2013
 ROGER R. MOHN, P.E. & L.S. Iowa Registration No. 10165
 My registration expires December 31, 2014

SEAL



List Corners to be Indexed			
Corners	Section	Twp	Range
NE Cor. of	21	97N	11W

UNITED STATES PUBLIC LAND SURVEY CORNER CERTIFICATE

SLSI 9-94

OF

Land Survey Monuments situated in Section 21, Township 97 North, Range 11 West, of the Fifth Principal Meridian, CHICKASAW County, Iowa.
 Previously recorded in N/A in County Recorder's Office.
(book, page, document number, etc.)

(Show reason for preparing this certificate, the evidence and detailed procedures used in establishing the corner positions and monumentation found or placed.)

Monument Description and Remarks: Found PK nail in centerline of two roads. Checked with County files.

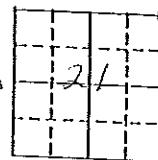
PLAN - VIEW

(Show a minimum of three reference ties to durable physical objects, relevant monuments and physical conditions that will enable recovery of the corner.)

60.05' NW to angle iron brace post

V56

58.35' "X" nails cor post NE

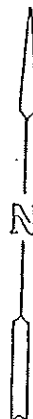


Cor D

100th ST.

76.35' SW to NE cor. table box

LINION



NORTHEAST COR.
21-97-11

cor. D

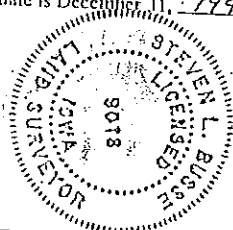
I hereby certify that the survey work was completed and this land surveying document was prepared by me or under my direct personal supervision and that I am a duly registered land surveyor under the laws of the state of Iowa

Signature: Steve Busse
 Name typed or printed: STEVE BUSSE

Date: 10/2/97 Reg. No. 9018

My registration renewal date is December 11, 1998

SEAL



Corners	List Section	Twps	Range
NE COR.	21	97	11

DOCUMENT No. 00679 FILED FOR RECORD THE 24th DAY OF October STATE OF IOWA, CHICKASAW COUNTY.
 RECORDING FEE \$ 6.00 O'CLOCK A.M. BOOK 165 PAGE 248
 TRANSFER FEE \$ _____ By Leitha H. Ross Recorder
 LEITHA H. ROSS Deputy