

SHIMAK SURVEYING, P.L.L.C., 3212 335th Street, Cresco, Iowa 52136 Phone (563) 379-8899

UNITED STATES PUBLIC LAND SURVEY CORNER CERTIFICATE

OF

Land Survey Monuments situated in Section 22, Township 97 North, Range 11 West of the Fifth Principal Meridian, Chickasaw County, Iowa.
 Previously recorded in 1.) None 2.) None in County Recorder's Office.
 (book, page, document number, etc.)

(Show reason for preparing this certificate, the evidence and detailed procedures used in establishing the corner positions and monumentation found or placed.)

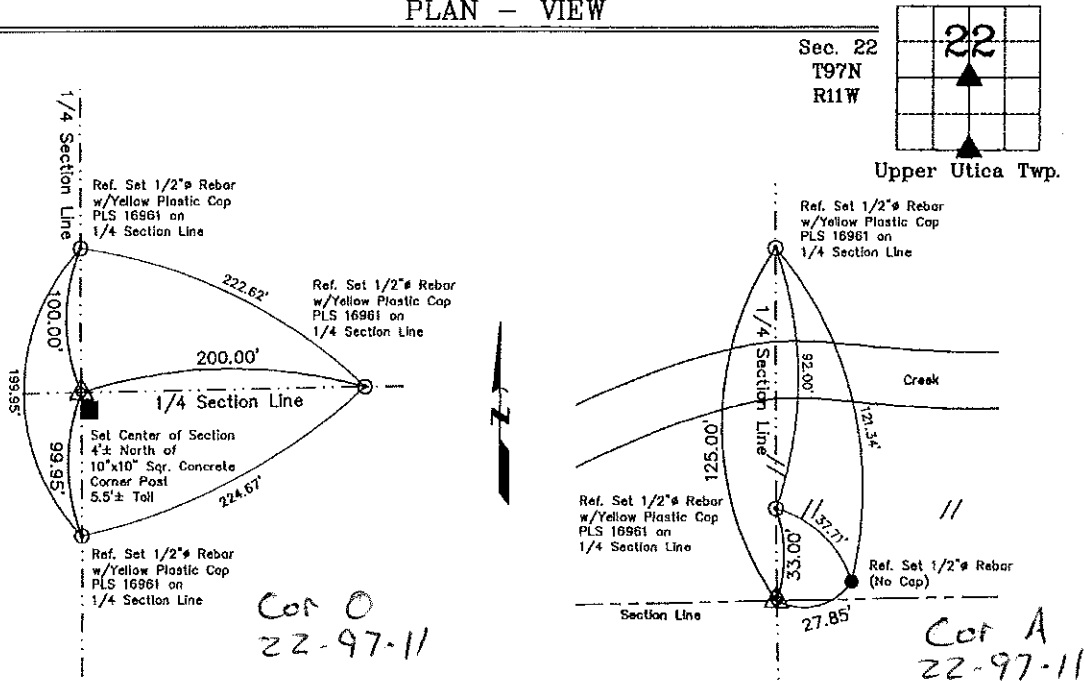
Monument Description and Remarks: **1.) Center of Section 22-T97N-R11W:**

Set 5/8"Ø Rebar w/Red Plastic Cap PLS 16961. Ran straight line from West Quarter Corner to the East Quarter and Intersected with a line ran from the North Quarter Corner along field division and fence corner near NW Corner of SW 1/4-NE 1/4. Ties were Placed as Shown Below.

2.) S 1/4 Corner of Section 22-T97N-R11W:

Set 5/8"Ø Rebar w/Red Plastic Cap PLS 16961. Ran a Line from the Center of Section to a Wood Corner Post on North ROW Line of Vacated Road and extended by 33 feet South. Three Ties were Placed as Shown Below.

PLAN - VIEW



1.) Center of Section 22-T97N-R11W
 Set 5/8"Ø Rebar w/Red Plastic Cap PLS 16961

2.) S 1/4 Corner of Section 22-T97N-R11W
 Set 5/8"Ø Rebar w/Red Plastic Cap PLS 16961



I hereby certify that this land surveying document was prepared and the related survey work was performed by me or under my direct personal supervision and that I am a duly licensed Land Surveyor under the laws of the State of Iowa.

Michael J. Shimak 4-14-2018
 Michael J. Shimak Date:
 License number 16961
 My license renewal date is December 31, 2019.
 Sheets covered by this seal: Sheet P1

List Corners to be Indexed

Corners	Section	Twp.	Range
Center of	22	97N	11W
S 1/4 Corner	22	97N	11W