

MOHN SURVEYING INC. ROGER R. MOHN 1890 GREAT RIVER ROAD LANSING, IOWA 52151 (563) 538-4067

TIES, DWG B-16

SLS 9-90

**UNITED STATES PUBLIC LAND SURVEY CORNER CERTIFICATE**

OF

Land Survey Monuments situated in Section 22, Township 97 North, Range 11 West, of the Fifth Principal Meridian, Chickasaw County, Iowa.  
 Previously recorded in Book 2007, Page 1282 in County Recorder's Office.

(book, page, document number, etc.)

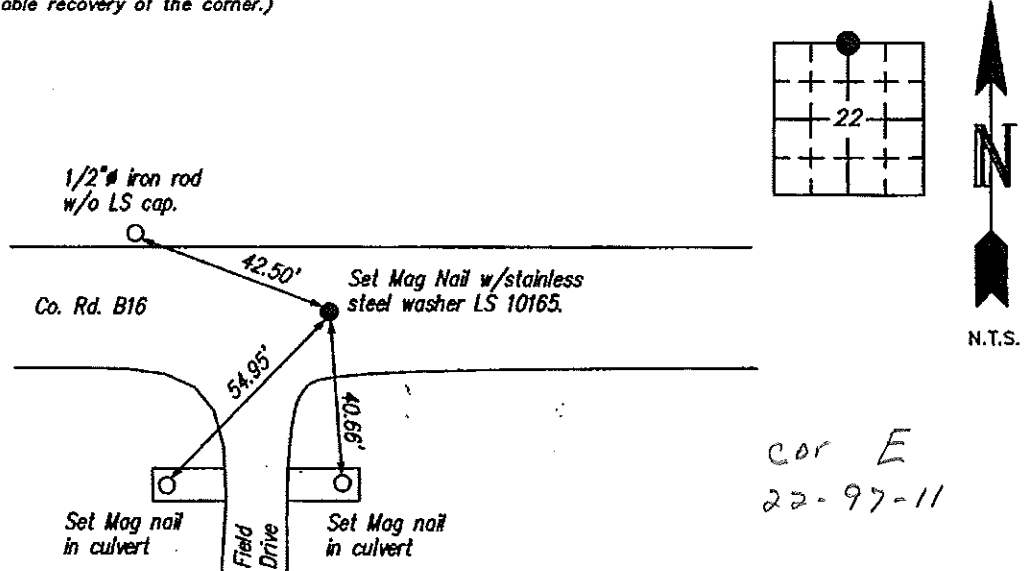
(Show reason for preparing this certificate, the evidence and detailed procedures used in establishing the corner positions and monumentation found or placed.)

Monument Description and Remarks: Found Mag Nail w/stainless steel washer LS 15525 at the corner position as per recorded USPLS Corner Certificate. Iowa State Plane Coordinate System North Zone (1401) Horizontal NAD 83 (1996) coordinates are as follows: N=3908088.438 E=5286203.510

Corner monument was covered with HMA roadway pavement overlay. Set Mag Nail w/stainless steel washer LS 10165 in HMA pavement.

**PLAN - VIEW**

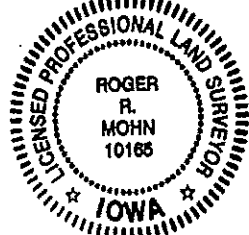
(Show a minimum of three reference ties to durable physical objects, relevant monuments and physical conditions that will enable recovery of the corner.)



cor E  
22-97-11

I hereby certify that this land surveying document was prepared by me or under my direct personal supervision and that I am a duly Registered Land Surveyor under the laws of the state of Iowa.

Roger R. Mohn 10/9, 2013  
 ROGER R. MOHN, P.E. & L.S. Iowa Registration No. 10165  
 My registration expires December 31, 2014



SEAL

List Corners to be Indexed			
Corners	Section	Twp	Range
North 1/4 Cor. of 22		97N	11W

Chickasaw Co. Recorder  
Cindy Messersmith  
**Fee Book 2007-1282**

06/21/2007 @0212PM  
SCC SEC COR CERT # Pages: 1  
Book: Page:  
Total Fees: \$7.00

*Herold - Recks Surveying, 25 1/2 East Main Street, Suite 204, New Hampton, IA 50659, Ph. 641-394-2725*

**CORRECTIVE UNITED STATES PUBLIC LAND SURVEY CORNER CERTIFICATE**

Land Survey Monuments situated in:

Section 22, Township 97 North, Range 11 West of the Fifth Principal Meridian,  
Chickasaw County, Iowa. Previously recorded in N/A

in County Recorder's Office. (book, page, document number, etc.)

(Show reason for preparing this certificate, the evidence and detailed procedures used in establishing the corner positions and monumentation found or placed.)

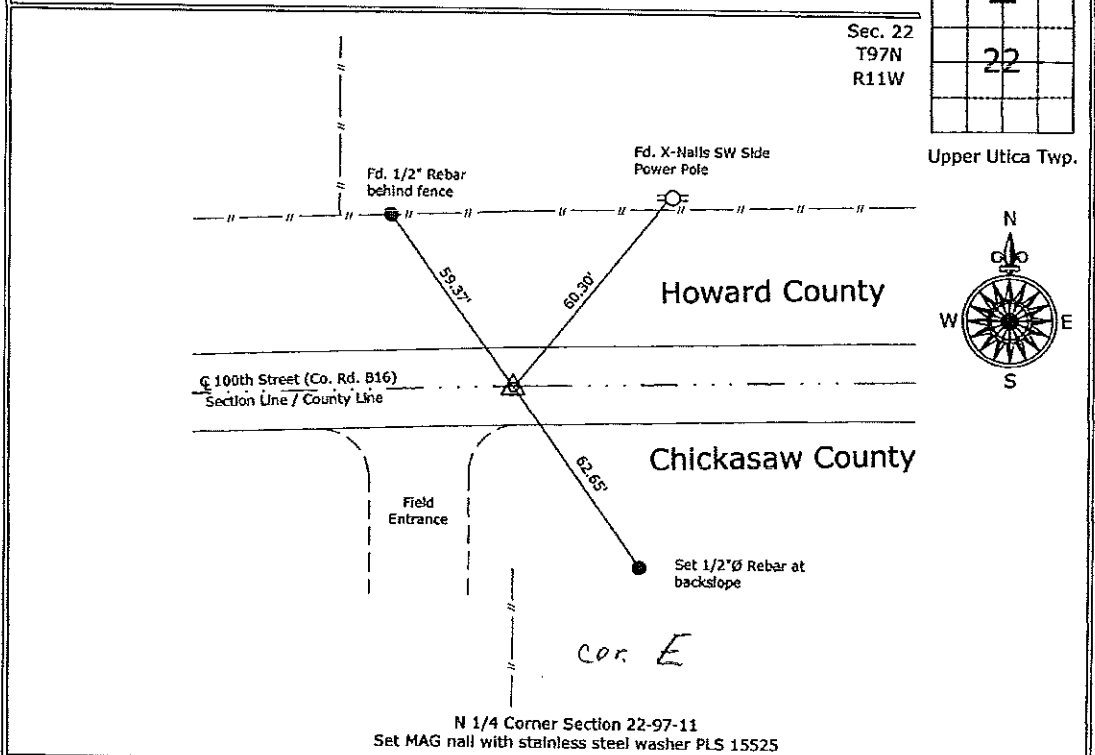
Monument Description and Remarks:

N 1/4 Corner Section 22-97-11 - Set MAG nail with stainless steel washer PLS 15525 from Information obtained from the Chickasaw County Engineer's office in field book "Utica Twp", Section 22, Cor. E.

This Corrective Section Corner Certificate is to supersede the one recorded on June 8, 2007, Document Number 2007-1188, in order to correct the Township Number.

**PLAN - VIEW**

(Show a minimum of three reference ties to durable physical objects, relevant monuments and physical conditions that will enable recovery of the corner.)



I hereby certify that this land surveying document was prepared and the related survey work was performed by me or under my direct personal supervision and that I am a duly licensed Land Surveyor under the laws of the State of Iowa.

*Paul R. Herold* 6-18-07  
Paul R. Herold Date:  
License number 15525  
My license renewal date is December 31, 2008.  
Sheets covered by this seal: Individual sheet only

List Corners to be Indexed			
Corners	Section	Twp.	Range
N 1/4	22	T97N	R11W
Project Number: 2007-058			
FB: Howard County 1, Pgs. 4-5			