

prepared by & Return to: Herald - Reicks Surveying, 10 East Main Street, New Hampton, IA 50659, Ph. 641-394-2725

UNITED STATES PUBLIC LAND SURVEY CORNER CERTIFICATE

Land Survey Monuments situated in Section ²²23, Township 97 North, Range 11 West of the Fifth Principal Meridian, Chickasaw County, Iowa. 1., 2.) Previously not recorded in the County Recorder's office.

This certificate is being prepared in compliance with Iowa Code Chapter 355.11 because:

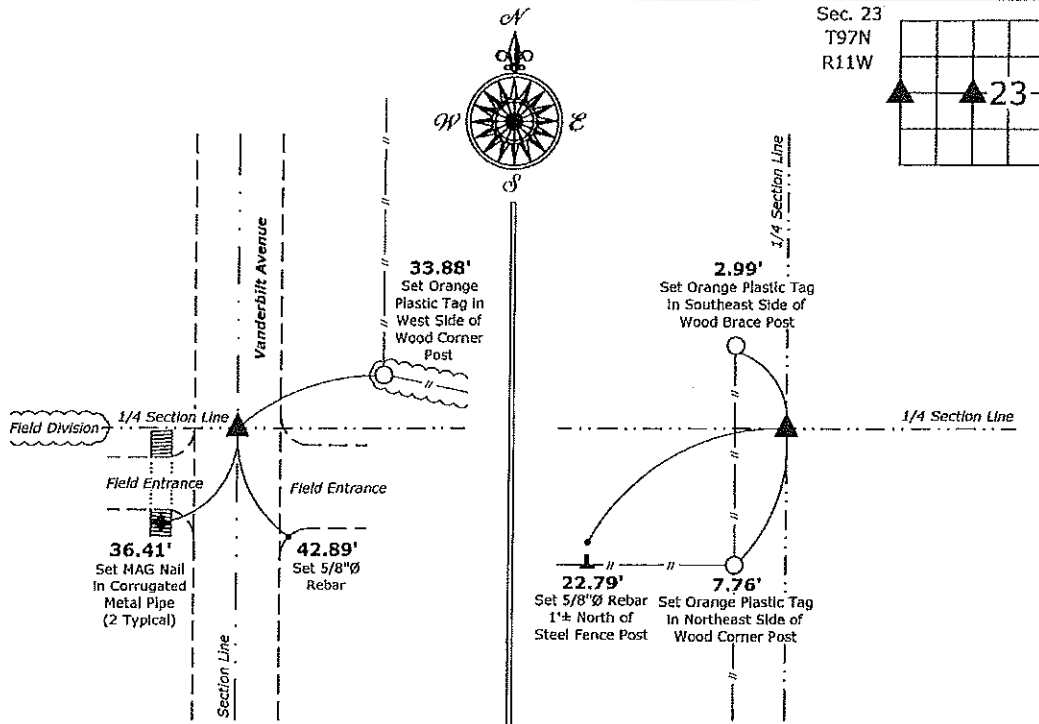
- 1 & 2 There is no certificate on file for this corner.
 There are no longer three valid ties of record.
 There are changes to reference ties of record.
 There is change of monumentation of record.
 To clarify description of record monument (ties).

Monument Description and Remarks:

- West 1/4 Corner:** Fd. 5/8" rebar 30" deep with information obtained from the County Engineer's office. Set 5/8"Ø rebar w/2"Ø aluminum cap PLS 19211 ovetop to perpetuate the monument.
- Center:** Set 5/8"Ø rebar w/2"Ø aluminum cap PLS 19211 at the intersection of 1/4 Section Lines. An extensive search of all of the records in the County offices was performed as part of the corner recovery, there were no records of the perpetuation of a monument at this corner position located.

PLAN - VIEW

(Show a minimum of three reference ties to durable physical objects, relevant monuments and physical conditions that will enable recovery of the corner.)



Cor. C, Sec. 22-97-11

Cor. O, Sec. 23-97-11

1.) West 1/4 Corner Section 23-97-11
 Set 5/8"Ø rebar w/2"Ø aluminum cap PLS 19211

2.) Center of Section 23-97-11
 Set 5/8"Ø rebar w/2"Ø aluminum cap PLS 19211



I hereby certify that this land surveying document was prepared and the related survey work was performed by me or under my direct personal supervision and that I am a duly licensed Land Surveyor under the laws of the State of Iowa.

Kirk D. Reicks 10-5-16
 Kirk D. Reicks Date:

License number 19211
 My license renewal date is December 31, 2016.
 Sheets covered by this seal: Individual sheet only

List Corners to be Indexed

Corners	Section	Twp.	Range
W 1/4	23	97	11
CTR	23	97	11

Project Number: 2016-114

FB: Chickasaw County 8, Pgs. 7-9