

Chickasaw Co. Recorder
 Cindy Messersmith
Fee Book 2016-1344
 10/05/2016 @0311PM
 SCC: SEC COR CERT # Pages: 1
 Book: Page: \$7.00
 Total Fees:

prepared by & Return to: Harold - Reicks Surveying, 10 East Main Street, New Hampton, IA 50659, Ph. 641-394-2725

UNITED STATES PUBLIC LAND SURVEY CORNER CERTIFICATE

Land Survey Monuments situated in Section ²² 23, Township 97 North, Range 11 West of the Fifth Principal Meridian, Chickasaw County, Iowa. 1., 2.) Previously not recorded in the County Recorder's office.

This certificate is being prepared in compliance with Iowa Code Chapter 355.11 because:

- 1 & 2 There is no certificate on file for this corner.
 There are no longer three valid ties of record.
 There are changes to reference ties of record.
 There is change of monumentation of record.
 To clarify description of record monument (ties).

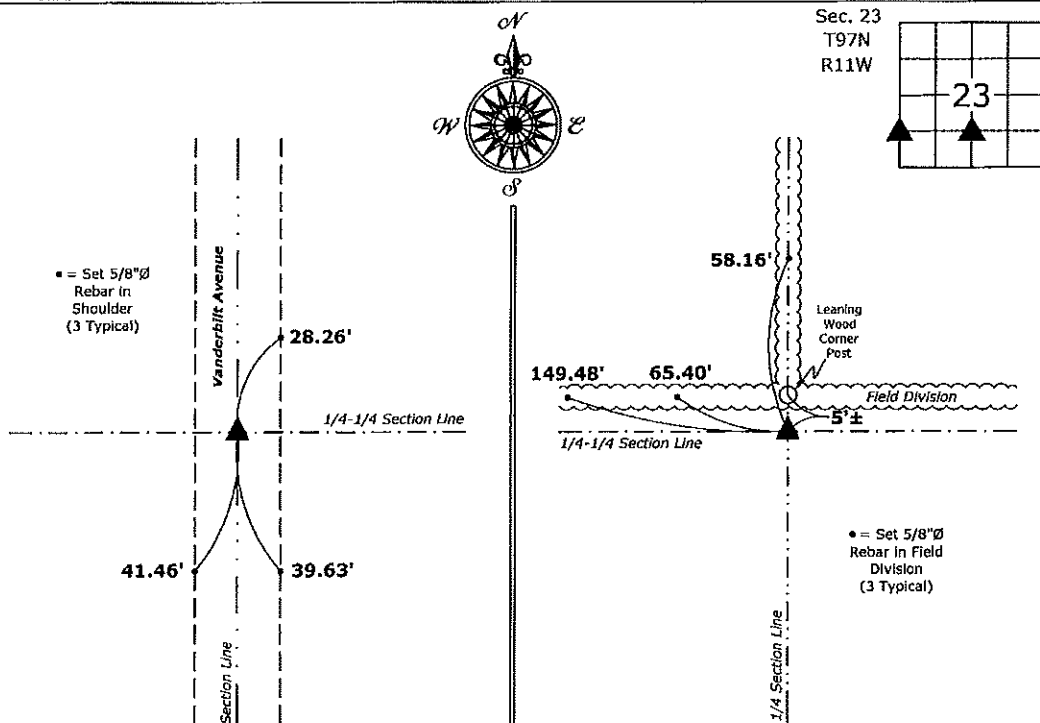
Monument Description and Remarks:

1.) Northwest Corner SW 1/4-SW 1/4: Set 5/8"Ø rebar w/2"Ø aluminum cap PLS 19211 equidistant and on line between the West 1/4 Corner and Southwest Corner of said Section.

2.) Northeast Corner SE 1/4-SW 1/4: Set 5/8"Ø rebar w/2"Ø aluminum cap PLS 19211 equidistant and on line between the South 1/4 Corner and Center of said Section.

PLAN - VIEW

(Show a minimum of three reference ties to durable physical objects, relevant monuments and physical conditions that will enable recovery of the corner.)



Cor. B₂, Sec. 22-97-11

Cor. J, Sec. 23-97-11

1.) Northwest Corner SW 1/4-SW 1/4 Section 23-97-11
 Set 5/8"Ø rebar w/2"Ø aluminum cap PLS 19211

2.) Northeast Corner SE 1/4-SW 1/4 Section 23-97-11
 Set 5/8"Ø rebar w/2"Ø aluminum cap PLS 19211



I hereby certify that this land surveying document was prepared and the related survey work was performed by me or under my direct personal supervision and that I am a duly licensed Land Surveyor under the laws of the State of Iowa.

Kirk D. Reicks 10-5-16

Kirk D. Reicks Date:

License number 19211
 My license renewal date is December 31, 2016.
 Sheets covered by this seal: Individual sheet only

List Corners to be Indexed

Corners	Section	Twp.	Range
NW-SW-SW	23	97	11
NE-SE-SW	23	97	11

Project Number: 2016-114

FB: Chickasaw County 8, Pgs. 7-9

File: S:_C3D Projects\County Control Systems\CHICKASAW\CHICK-8.dwg, 10/5/2016 7:11:50 AM