

MOHN SURVEYING INC. ROGER R. MOHN 1890 GREAT RIVER ROAD LANSING, IOWA 52151 (563) 538-4067  
 TIES. DWG B-16 SLSI 9-90

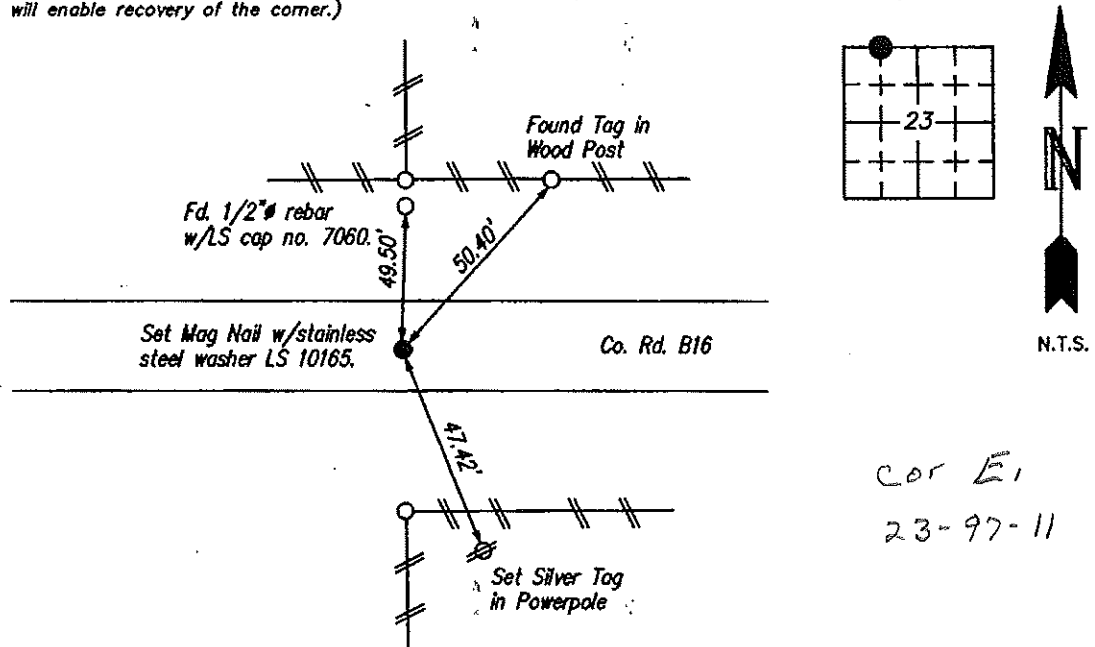
**UNITED STATES PUBLIC LAND SURVEY CORNER CERTIFICATE**

OF  
 Land Survey Monuments situated in Section 23, Township 97 North, Range 11 West, of the Fifth Principal Meridian, Chickasaw County, Iowa.  
 Previously recorded in Book 169, Page 1 in County Recorder's Office.  
 (book, page, document number, etc.)

(Show reason for preparing this certificate, the evidence and detailed procedures used in establishing the corner positions and monumentation found or placed.)  
 Monument Description and Remarks: Found Mag Nail w/stainless steel washer LS 7060 at the corner position as per recorded USPLS Corner Certificate. Iowa State Plane Coordinate System North Zone (1401) Horizontal NAD 83 (1996) coordinates are as follows: N=3908155.109 E=5290207.851  
Corner monument was covered with HMA roadway pavement overlay. Set Mag Nail w/stainless steel washer LS 10165 in HMA pavement.

**PLAN - VIEW**

(Show a minimum of three reference ties to durable physical objects, relevant monuments and physical conditions that will enable recovery of the corner.)

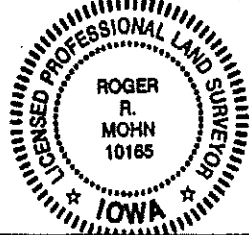


Cor E1  
 23-97-11

I hereby certify that this land surveying document was prepared by me or under my direct personal supervision and that I am a duly Registered Land Surveyor under the laws of the state of Iowa.

*Roger R. Mohn* 10/9, 2013  
 ROGER R. MOHN, P.E. & L.S. Iowa Registration No. 10165  
 My registration expires December 31, 2014

SEAL



Comers	Section	Twp	Range
NE Cor. of NW1/4-NW1/4	23	97N	11W

UNITED STATES PUBLIC LAND SURVEY CORNER CERTIFICATE

OF

Land Survey Monuments situated in Section 23, Township 97 North, Range 11 West, of the Fifth Principal Meridian, CHICKASAW County, Iowa.

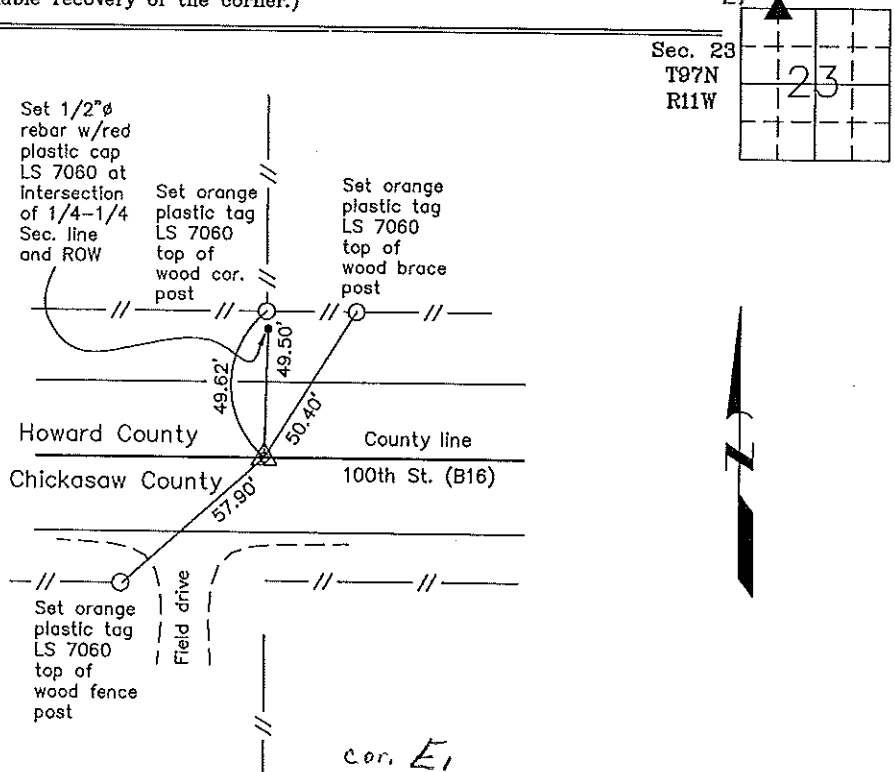
Previously recorded in none in County Recorder's Office.  
(book, page, document number, etc.)

(Show reason for preparing this certificate, the evidence and detailed procedures used in establishing the corner positions and monumentation found or placed.)

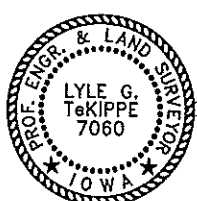
Monument Description and Remarks: NE Corner NW 1/4-NW 1/4 Section 23 T97N R11W:  
Set MAG nail w/stainless steel washer LS 7060 equidistant and on line between the NW Corner and the N 1/4 Corner of Section 23.

PLAN - VIEW

(Show a minimum of three reference ties to durable physical objects, relevant monuments and physical conditions that will enable recovery of the corner.)



NE Corner NW 1/4-NW 1/4 Section 23 T97N R11W  
Set MAG nail w/stainless steel washer LS 7060



I hereby certify that this land surveying document was prepared and the related survey work was performed by me or under my direct personal supervision and that I am a duly licensed Land Surveyor under the laws of the State of Iowa.

*Lyle G. TeKippe* 9-16-98  
Lyle G. TeKippe Date  
License number 7060  
My license renewal date is December 31, 1998.  
Sheets covered by this seal: Individual

List Corners to be Indexed			
Corners	Section	Twp.	Range
NE-NW-NW	23	97N	11W
Cor E <sub>1</sub>	23-97-11		

Placed in the book  
9/17/98