

MOHN SURVEYING INC. ROGER R. MOHN 1890 GREAT RIVER ROAD LANSING, IOWA 52151 (563) 538-4067

TIES. DWG B-16

SLSI 9-90

UNITED STATES PUBLIC LAND SURVEY CORNER CERTIFICATE

OF

Land Survey Monuments situated in Section 23, Township 97 North, Range 11 West, of the Fifth Principal Meridian, Chickasaw County, Iowa.
 Previously recorded in Book 169, Page 2 in County Recorder's Office.

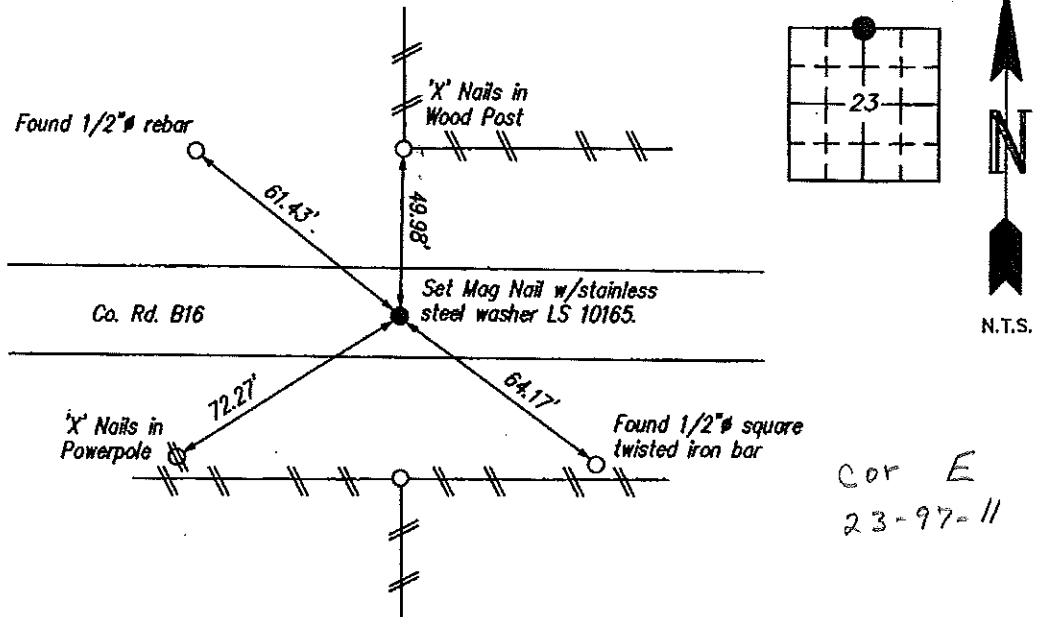
(book, page, document number, etc.)

(Show reason for preparing this certificate, the evidence and detailed procedures used in establishing the corner positions and monumentation found or placed.)

Monument Description and Remarks: Corner position had previously been monumented with a Mag Nail w/stainless steel washer LS 7060 as per recorded USPLS Corner Certificate. Mag Nail had been removed during patching of pavement. Re-established corner position using accessory points of recorded USPLS corner certificate. Iowa State Plane Coordinate System North Zone (1401) Horizontal NAD 83 (1996) coordinates are as follows: N=3908167.671 E=5291547.993. Corner monument was covered with HMA roadway pavement overlay. Set Mag Nail w/stainless steel washer LS 10165 in HMA pavement.

PLAN - VIEW

(Show a minimum of three reference ties to durable physical objects, relevant monuments and physical conditions that will enable recovery of the corner.)

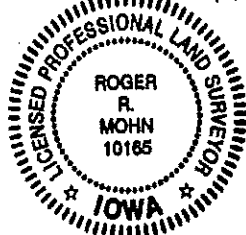


Cor E
23-97-11

I hereby certify that this land surveying document was prepared by me or under my direct personal supervision and that I am a duly Registered Land Surveyor under the laws of the state of Iowa.

Roger R. Mohn 10/9 2013
 ROGER R. MOHN, P.E. & L.S. Iowa Registration No. 10165
 My registration expires December 31, 2014

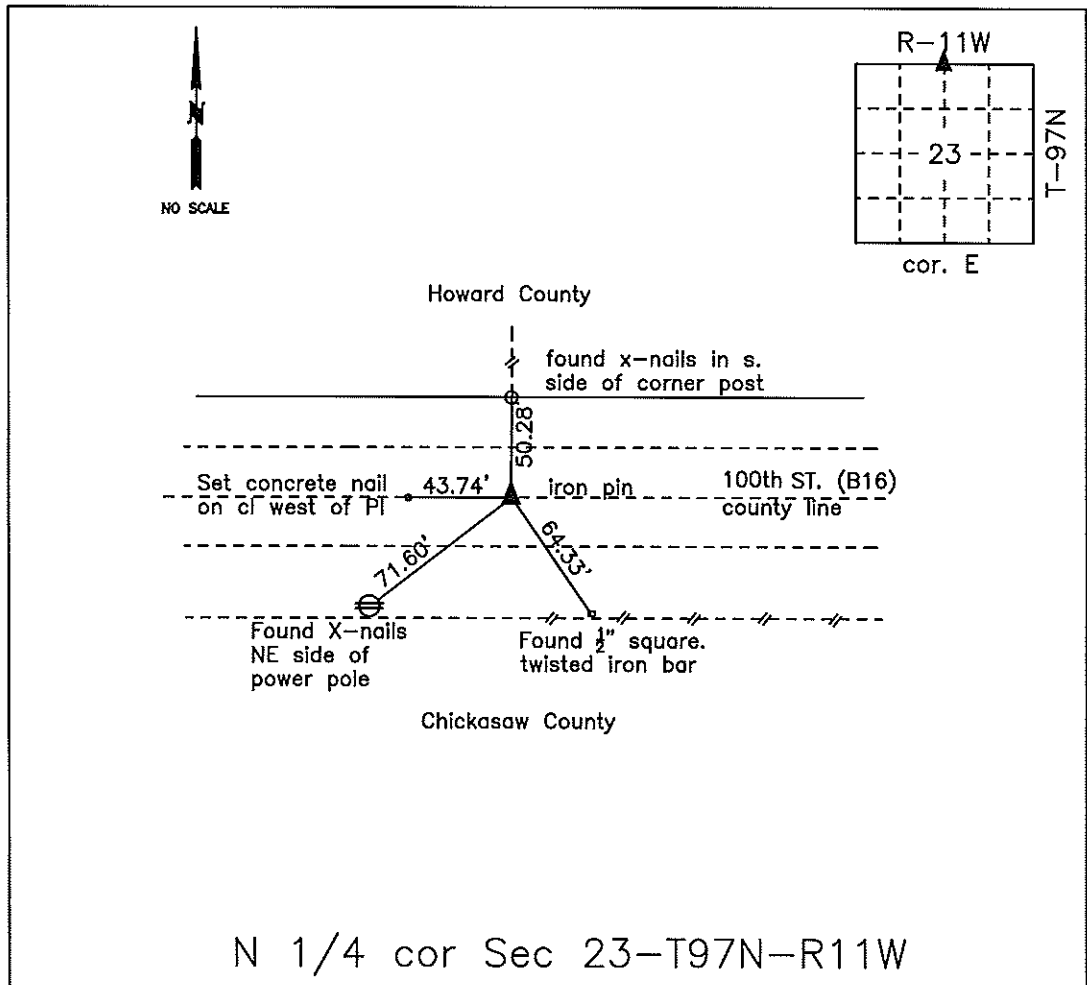
SEAL



Comers	Section	Twp	Range
North 1/4 Cor. of 23		97N	11W

COUNTY ENGINEER'S SECTION CORNER PRESERVATION RECORD

LAND SURVEY MONUMENT LOCATED IN SECTION 23, TOWNSHIP 97 N
NORTH, RANGE 11 W, OF THE 5TH P.M. Chickasaw COUNTY, IOWA
PREVIOUSLY RECORDED BK 169 PG 2



MONUMENT DESCRIPTION AND NARRATIVE Found mag nail w/stainless steel washer with
information previously recorded by Tekippe Engineering in Bk 169-Pg 2 on 9/16/98.

Chained
All ties are GPS surveyed.

I AM NOT A REGISTERED LAND SURVEYOR UNDER THE LAWS OF THE STATE OF IOWA

JIM FOSTER CHICKASAW CO. DATE: 8/21/12

UNITED STATES PUBLIC LAND SURVEY CORNER CERTIFICATE

OF

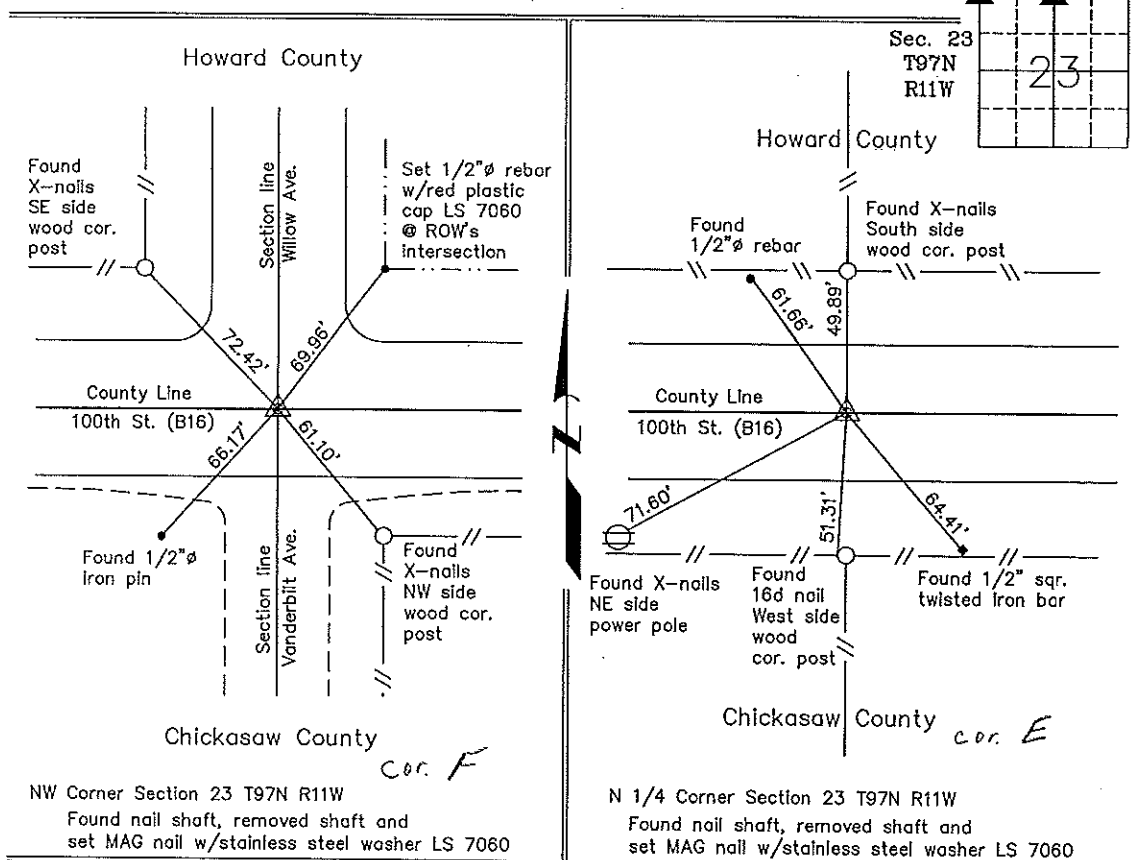
Land Survey Monuments situated in Section 23, Township 97 North, Range 11 West, of the Fifth Principal Meridian, CHICKASAW County, Iowa. Previously recorded in none in County Recorder's Office. (book, page, document number, etc.)

(Show reason for preparing this certificate, the evidence and detailed procedures used in establishing the corner positions and monumentation found or placed.)

Monument Description and Remarks: NW Corner Section 23 T97N R11W: Located a nail shaft with information obtained from the Chickasaw County Engineer's Office in Field Book "Utica Twp. Corner Ties", Section 22, Corner D.
N 1/4 Corner Section 23 T97N R11W: Located a nail shaft with information obtained from the Chickasaw County Engineer's Office in Field Book "Utica Twp. Corner Ties", Section 23, Corner E. NOTE: At both corners the nail shaft was removed and replaced with a MAG nail w/stainless steel washer LS 7060.

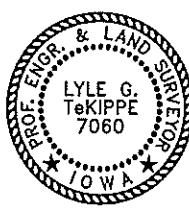
PLAN - VIEW

(Show a minimum of three reference ties to durable physical objects, relevant monuments and physical conditions that will enable recovery of the corner.)



NW Corner Section 23 T97N R11W
 Found nail shaft, removed shaft and set MAG nail w/stainless steel washer LS 7060

N 1/4 Corner Section 23 T97N R11W
 Found nail shaft, removed shaft and set MAG nail w/stainless steel washer LS 7060



I hereby certify that this land surveying document was prepared and the related survey work was performed by me or under my direct personal supervision and that I am a duly licensed Land Surveyor under the laws of the State of Iowa.
Lyle G. TeKippe 7-16-98
 Lyle G. TeKippe Date
 License number 7060
 My license renewal date is December 31, 1998.
 Sheets covered by this seal: Individual

List Corners to be Indexed			
Corners	Section	Twp.	Range
NW	23	97N	11W
Cor D	22-97-11		
N 1/4	23	97N	11W
Corner E	23-97-11		